

COUNTER-BALANCED STACKER - CBS-56-1-AC

APPROX WEIGHT: 1147.38 lbs.
 DOES NOT INCLUDE WEIGHT OF POWER OR PACKAGING!!!

*** ANY ADDITIONS, DELETIONS, OR OMISSIONS MUST BE CORRECTED ON THIS DRAWING AS THIS DRAWING WILL BE CONSIDERED ALL INCLUSIVE ***

ALL GRAPHICS PROVIDED ARE FOR REFERENCE ONLY. IF CERTAIN DIMENSIONS ARE CRITICAL PLEASE VERIFY THOSE DIMENSIONS WITH YOUR SALESPERSON

STANDARD FEATURES

MODEL NUMBER: CBS-56-1-AC

OVERALL LENGTH: 62 13/16"

OVERALL WIDTH: 27 1/2"

OVERALL HEIGHT: 71 7/8"

LOWERED HEIGHT OF FORK IS 1 1/4"

RAISED HEIGHT OF FORK IS 56"

FORK ADJUSTMENT RANGE IS 4" TO 19"

FORK SIZE IS

3" WIDTH X 25 1/2" LENGTH X 1" THICKNESS

UNIFORM CAPACITY IS 1,000 LB

AT LOAD CENTER 12"

CASTERS:

FRONT: 6" X 2" GFN WHEELS

REAR: 6" X 2" GFN SWIVEL CASTERS WITH BRAKES

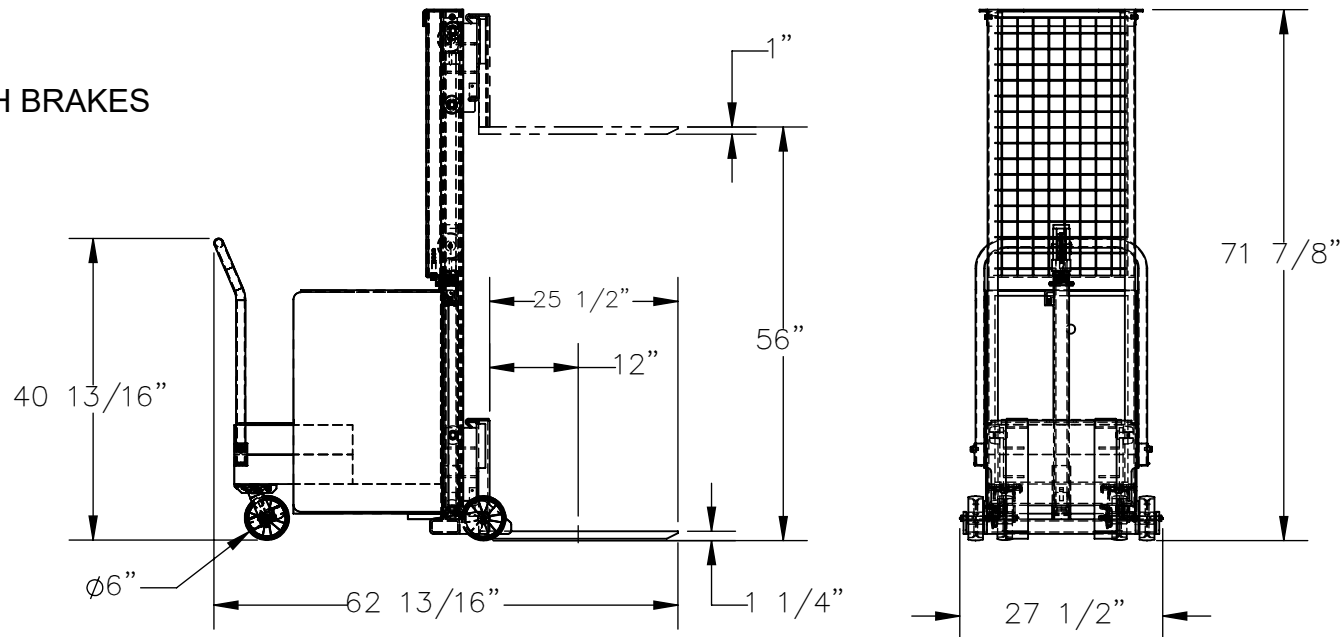
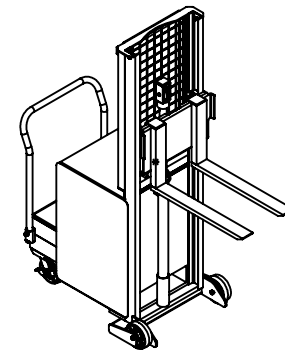
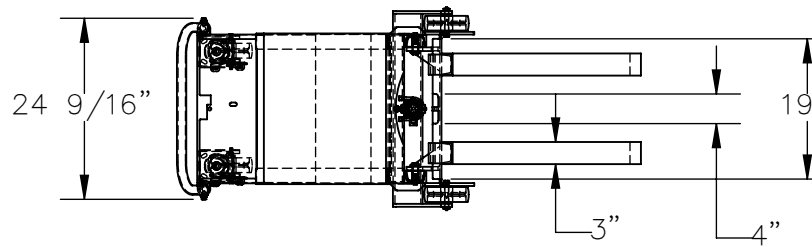
POWER UNIT: 115 V AC SINGLE PHASE

CONTROL: HAND

DURABLE LIQUID PAINT BLUE FINISH

SPECIAL FEATURES

NONE



DIMENSION TOLERANCE ± 1/4"

APPROVAL	I, THE UNDERSIGNED, AGREE THAT THE PRODUCT AS REPRESENTED SATISFIES DESIGN AND DIMENSION REQUIREMENTS. I ALSO ACKNOWLEDGE MY DUTY TO CONFIRM PRODUCT AND INSTALLATION COMPLIANCE WITH ALL APPLICABLE FEDERAL, STATE AND LOCAL REGULATIONS AND STANDARDS.		FOR INTERNAL USE ONLY		DISTRIBUTOR'S NAME:		P.O.# X
			PROJECT SIGN OFF		VESTIL MANUFACTURING		W.O.# X
	ANY MODIFIED UNITS ARE NON-RETURNABLE		SALES		DRAWN BY: SJA	DATE: 9/20/2016	SALES: X
	[] As drawn [] As marked		ENG.		REFERENCE: X	SCALE: 1:26	FILE NAME:
	Signed: _____ Date: _____		FAB.		QUOTED LEAD TIME: X	QUOTE # X	21-007-063-001
Printed Name: _____		POWER					
LEAD TIME WILL START UPON RECEIPT OF SIGNED APPROVAL DRAWING							