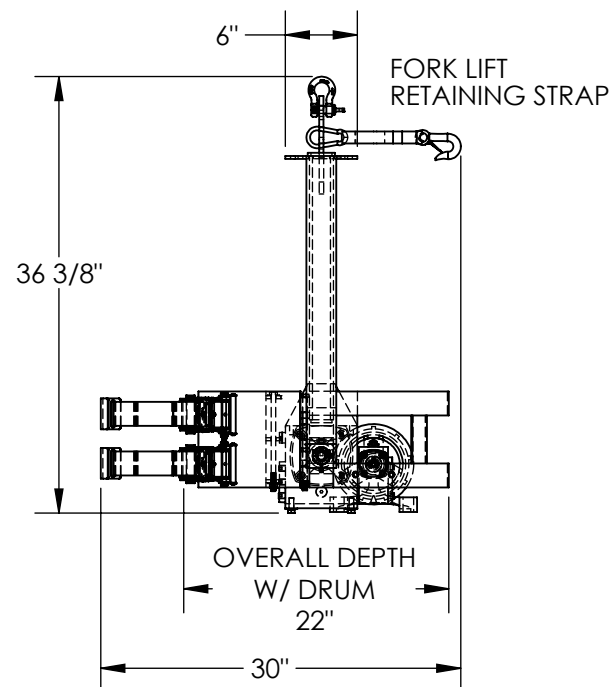
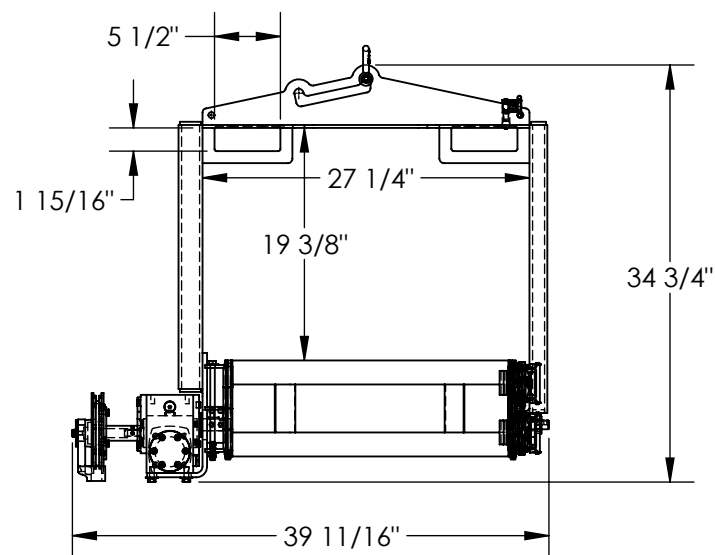


DRUM CARRIER/ROTATOR - DCT-2000

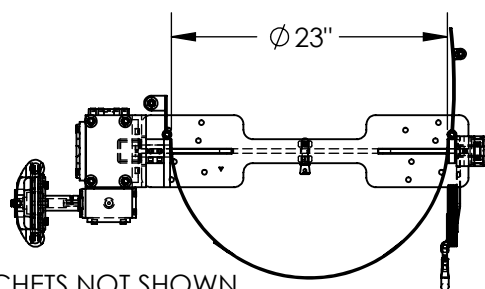
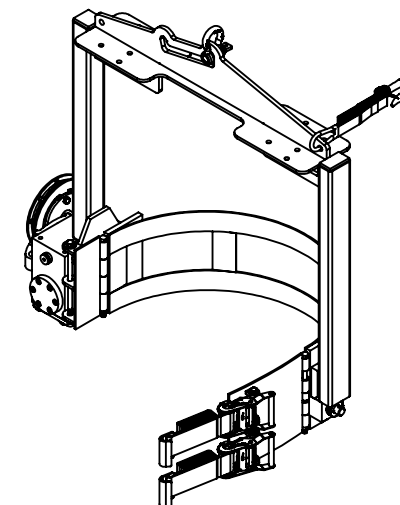
APPROX WEIGHT: 159.67 lbs.
DOES NOT INCLUDE WEIGHT OF POWER OR PACKAGING!!!

*** ANY ADDITIONS, DELETIONS, OR OMISSIONS MUST BE CORRECTED ON THIS DRAWING AS THIS DRAWING WILL BE CONSIDERED ALL INCLUSIVE ***

ALL GRAPHICS PROVIDED ARE FOR REFERENCE ONLY. IF CERTAIN DIMENSIONS ARE CRITICAL PLEASE VERIFY THOSE DIMENSIONS WITH YOUR SALESPERSON



PULL CHAIN NOT SHOWN FOR CLARITY



RATCHETS NOT SHOWN
FOR CLARITY

DIMENSION TOLERANCE $\pm 1/4$ "

STANDARD FEATURES

MODEL NUMBER: DCT-2000
OVERALL WIDTH: 39 11/16"
OVERALL HEIGHT: 36 3/8"
DEPTH W/DRUM: 22"
MAX CAPACITY: 2,000 LBS
FORK POCKET SIZE: 5 1/2" X 1 15/16"
FORK TRUCK ATTACHMENT STRAP
CRADLE ID: Ø23"
ADJUSTABLE HOIST HOOK POINT
TOUGH BAKED IN POWDERCOATED BLUE FINISH

SPECIAL FEATURES

NONE

APPROVAL

I, THE UNDERSIGNED, AGREE THAT THE PRODUCT AS REPRESENTED SATISFIES DESIGN AND DIMENSION REQUIREMENTS. I ALSO ACKNOWLEDGE MY DUTY TO CONFIRM PRODUCT AND INSTALLATION COMPLIANCE WITH ALL APPLICABLE FEDERAL, STATE AND LOCAL REGULATIONS AND STANDARDS.
ANY MODIFIED UNITS ARE NON-RETURNABLE
[] As drawn [] As marked

Signed: _____ Date: _____

Printed Name: _____

LEAD TIME WILL START UPON RECEIPT OF SIGNED APPROVAL DRAWING

FOR INTERNAL USE ONLY
PROJECT SIGN OFF

SALES	
ENG.	
FAB.	
POWER	

DISTRIBUTOR'S NAME:

VESTIL MANUFACTURING

DRAWN BY:

DEC

DATE:

6/12/2015

REFERENCE:

X

SCALE: 1:16

QUOTED LEAD TIME:

X

QUOTE #

X

P.O.#

X

W.O.#

X

SALES:

X

FILE NAME:

09-007-194