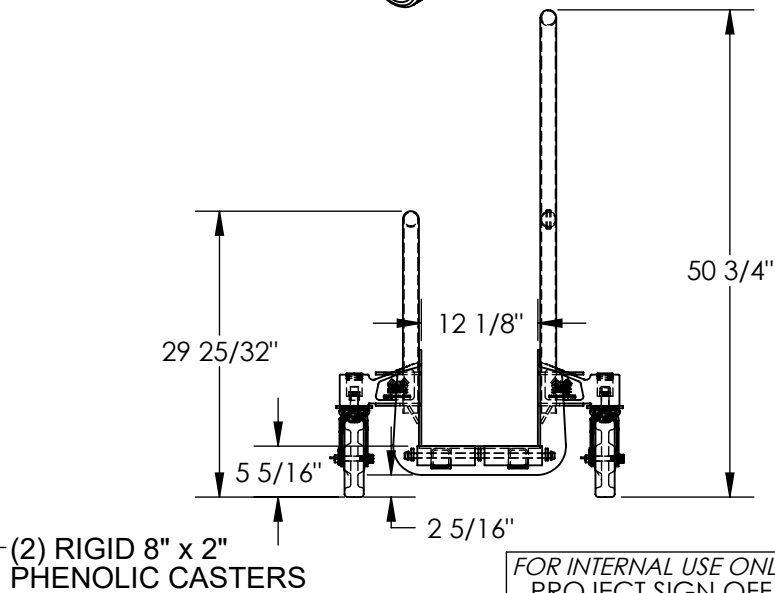
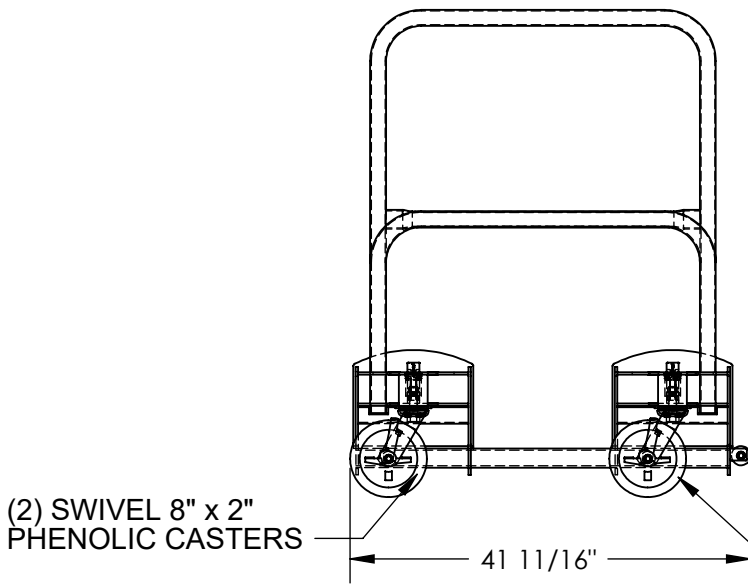
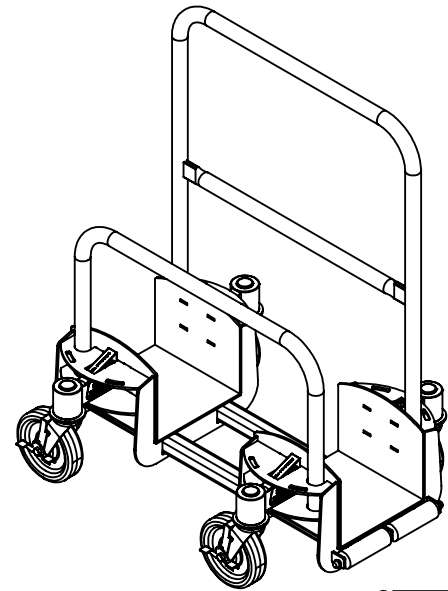
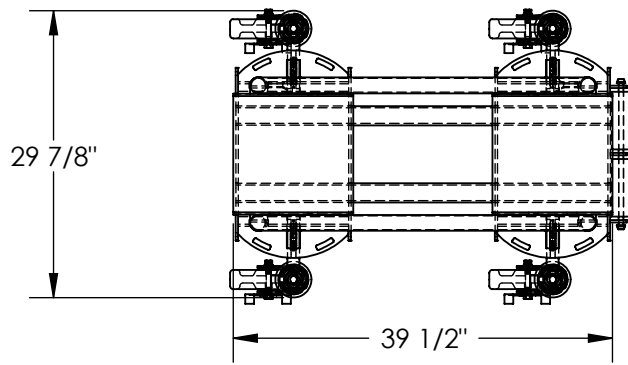


# EASY LOAD MATERIAL CART - DWC-EL-36

APPROX WEIGHT: 229.23 lbs.  
DOES NOT INCLUDE WEIGHT OF POWER OR PACKAGING!!!

\*\*\*ANY ADDITIONS, DELETIONS, OR OMISSIONS MUST BE CORRECTED ON THIS DRAWING AS THIS DRAWING WILL BE CONSIDERED ALL INCLUSIVE\*\*\*



FOR INTERNAL USE ONLY PROJECT SIGN OFF	
SALES	
ENG.	
FAB.	
POWER	

ALL GRAPHICS PROVIDED ARE FOR REFERENCE ONLY. IF CERTAIN DIMENSIONS ARE CRITICAL PLEASE VERIFY THOSE DIMENSIONS WITH YOUR SALESPERSON

## STANDARD FEATURES

- MODEL NUMBER IS DWC-EL-36
- CAPACITY IS: 2000 LBS.
- MAX. LOAD SIZE HEIGHT IS: 72"
- OVERALL WIDTH IS: 29 7/8"
- USABLE (DECK) WIDTH IS: 12 1/8"
- OVERALL LENGTH IS: 41 11/16"
- USABLE (DECK) LENGTH IS: 39 1/2"
- OVERALL HEIGHT IS: 50 3/4"
- STANDARD WITH 2 EASY-ROLL ENTRY ROLLERS
- FRAME HAS TOUGH BAKED IN POWDER COATED BLUE FINISH
- HANDRAILS HAVE TOUGH BAKED IN POWDER COATED YELLOW FINISH
- REMOVABLE HANDRAILS
- 2 SWIVEL 8" x 2" PHENOLIC CASTERS
- 2 RIGID 8" x 2" PHENOLIC CASTERS

## SPECIAL FEATURES

NONE

APPROVAL

I, THE UNDERSIGNED, AGREE THAT THE PRODUCT AS REPRESENTED SATISFIES DESIGN AND DIMENSION REQUIREMENTS. I ALSO ACKNOWLEDGE MY DUTY TO CONFIRM PRODUCT AND INSTALLATION COMPLIANCE WITH ALL APPLICABLE FEDERAL, STATE AND LOCAL REGULATIONS AND STANDARDS.  
**UNITS REQUIRING APPROVAL DRAWINGS OR MODIFIED ARE NON-RETURNABLE**  
[ ] As drawn [ ] As marked

Signed: \_\_\_\_\_ Date: \_\_\_\_\_

Printed Name: \_\_\_\_\_

LEAD TIME WILL START UPON RECEIPT OF SIGNED APPROVAL DRAWING

DISTRIBUTOR'S NAME:		P.O.#
VESTIL MANUFACTURING		X
DRAWN BY: TJM		W.O.#
DATE: 9/28/09		X
REFERENCE: X	SCALE: 1:20	SALES: X
QUOTED LEAD TIME: X	QUOTE # X	FILE NAME:
		16-007-228