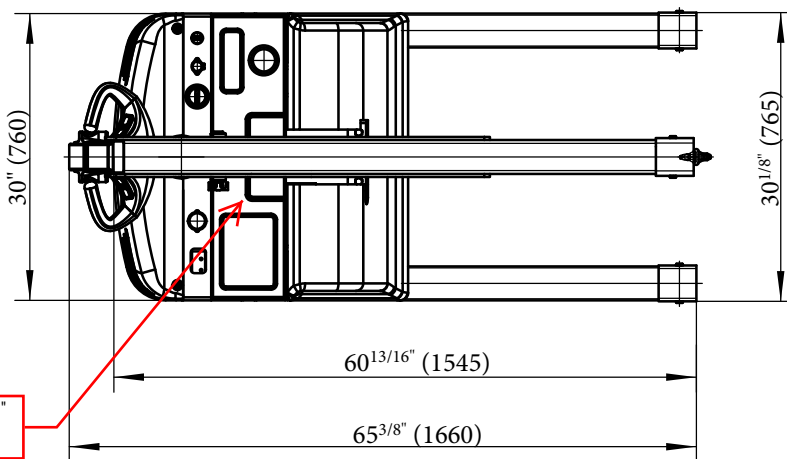
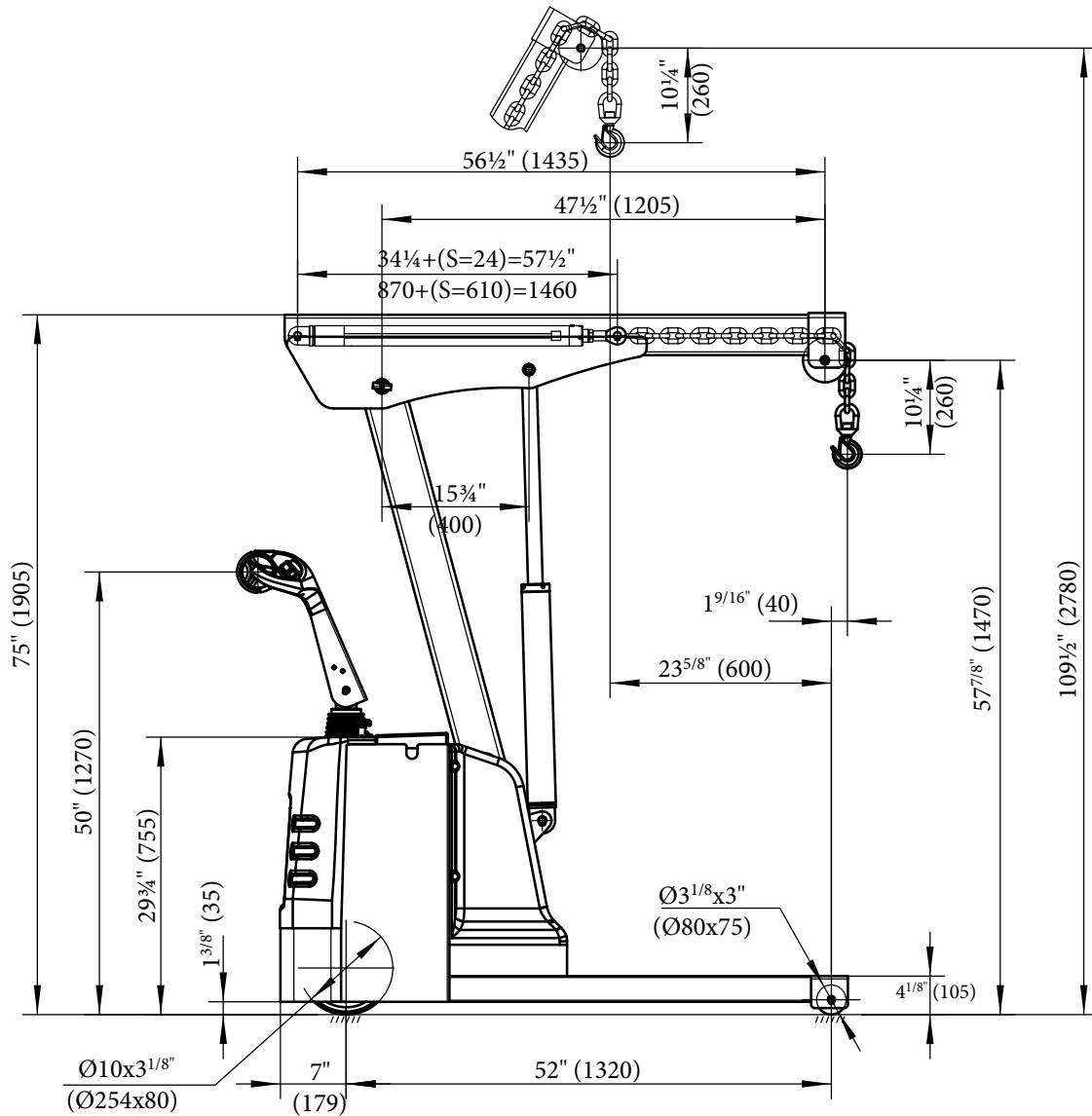


EPFC-16-LP (ELECTRIC POWERED LOW PROFILE FLOOR CRANE)



Battery compartment size (LxDxH): 29.5"x8"x9.5-10"
Deduct charger depth 3.5" and inside length will be left to 26".

Specifications

Maximum Capacity : 1,600 lbs (725kgs)
 Drive Motor: DC24V/0.7KW
 Lift Motor: DC24V/2KW
 Battery: 2x12V/85-95Ah
 Battery Charger: 24V/12amp
 Lift Speed w/o Load: 0.70"/sec
 Lift Speed w/load: 0.50"/sec
 Lower down speed w/o load: 0.75"/sec
 Lower down speed w/load: 1"/sec
 Travel speed w/o load: 2.7 m/h
 Travel speed w/load: 1.8 m/h
 Gradeability: 0%

VESTIL MANUFACTURING CORP.	
Model:	EPFC-16-LP
Description:	Electric Powered Low Profile Floor Crane
Design: T.M	Date: 04/08/2021