

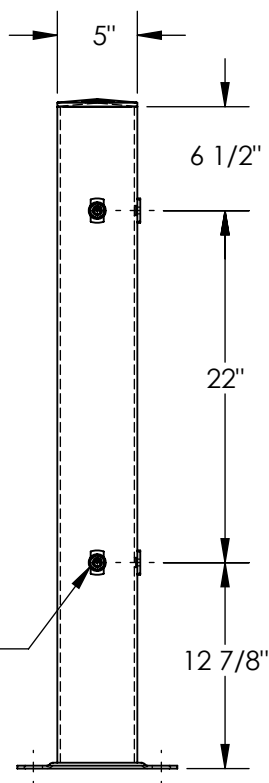
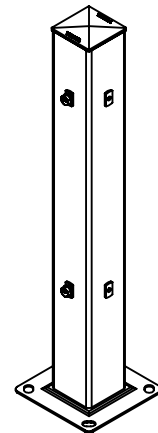
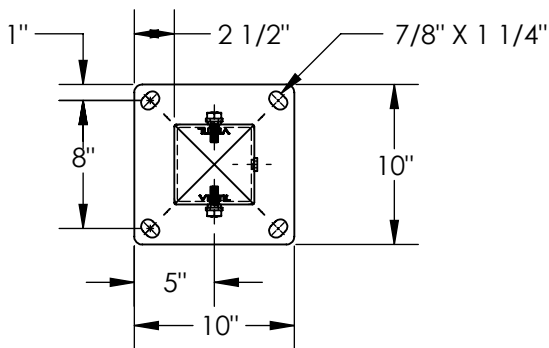
TUBULAR POST GUARD RAIL - GR-H2R-BO-TP42-YL

ANY ADDITIONS, DELETIONS, OR OMISSIONS MUST BE CORRECTED ON THIS DRAWING AS THIS DRAWING WILL BE CONSIDERED ALL INCLUSIVE

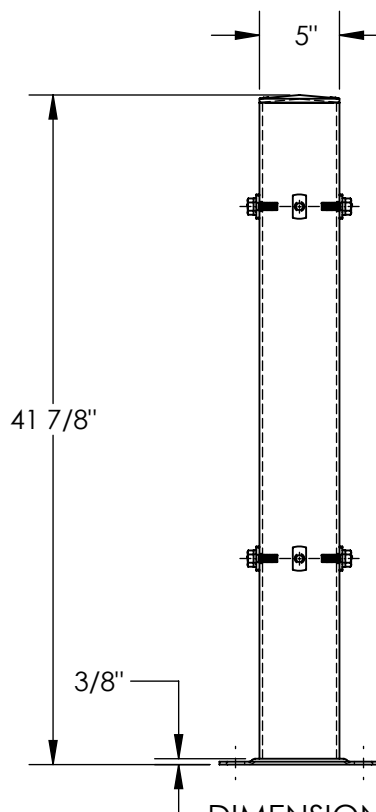
ALL GRAPHICS PROVIDED ARE FOR REFERENCE ONLY. IF CERTAIN DIMENSIONS ARE CRITICAL PLEASE VERIFY THOSE DIMENSIONS WITH YOUR SALESPERSON

APPROX WEIGHT: 52.9 LBS.

DOES NOT INCLUDE WEIGHT OF POWER OR PACKAGING!!!



(4) 1/2-13 UNC BOLT & WASHER INCLUDED



DIMENSION TOLERANCE $\pm 1/2"$

STANDARD FEATURES

MODEL NUMBER IS: GR-H2R-BO-TP42-YL
OVERALL HEIGHT IS: 41 7/8"
SQUARE TUBE IS: 5"x5"
BASE PLATE IS: 3/8"x10"x10" WITH
7/8"x1 1/4" ANCHOR HOLES ON 8" CENTERS
RATED FOR 4,000 LBS AT 4 MPH
TOUGH BAKED IN POWDER COATED
YELLOW FINISH

SPECIAL FEATURES

NONE

APPROVAL

I, THE UNDERSIGNED, AGREE THAT THE PRODUCT AS REPRESENTED SATISFIES DESIGN AND DIMENSION REQUIREMENTS. I ALSO ACKNOWLEDGE MY DUTY TO CONFIRM PRODUCT AND INSTALLATION COMPLIANCE WITH ALL APPLICABLE FEDERAL, STATE AND LOCAL REGULATIONS AND STANDARDS.
UNITS REQUIRING APPROVAL DRAWINGS OR MODIFIED ARE NON-RETURNABLE
[] As drawn [] As marked

Signed: _____ Date: _____

Printed Name: _____

LEAD TIME WILL START UPON RECEIPT OF SIGNED APPROVAL DRAWING

DISTRIBUTOR'S NAME:

VESTIL MANUFACTURING

DRAWN BY: MTS

DATE: 2/14/2013

REFERENCE: X

SCALE: 1:12

QUOTED LEAD TIME: X

QUOTE # X

P.O.# X

W.O.# X

SALES: X

FILE NAME:

23-007-028