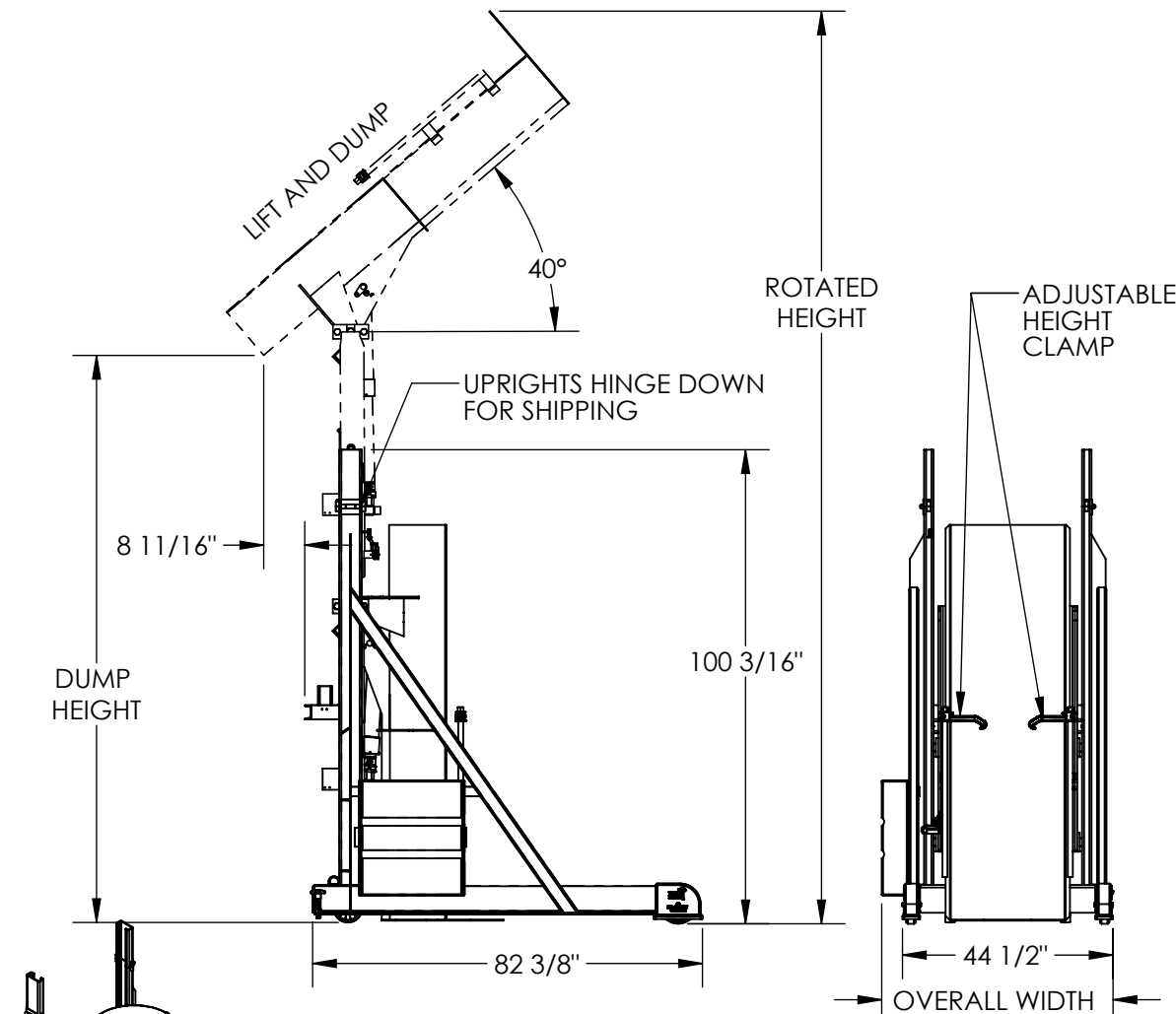


PORTABLE LIFT-AND-DUMP HYDRAULIC DRUM DUMPERS - HLD-116-10-P

APPROX WEIGHT: 1276.88 lbs.  
DOES NOT INCLUDE WEIGHT OF POWER OR PACKAGING!!!

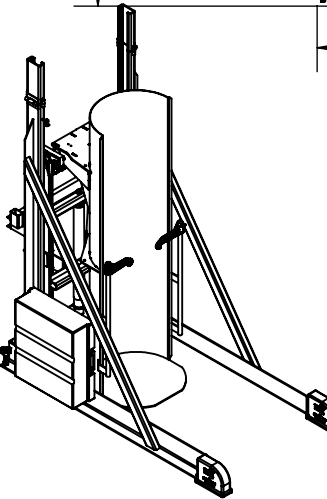
\*\*\* ANY ADDITIONS, DELETIONS, OR OMISSIONS MUST BE CORRECTED ON THIS DRAWING AS THIS DRAWING WILL BE CONSIDERED ALL INCLUSIVE \*\*\*  
ALL GRAPHICS PROVIDED ARE FOR REFERENCE ONLY. IF CERTAIN DIMENSIONS ARE CRITICAL PLEASE VERIFY THOSE DIMENSIONS WITH YOUR SALESPERSON



**STANDARD FEATURES**  
MODEL NUMBER IS HLD-116-10-P  
LIFT AND DUMP DESIGN  
INDEPENDENT LIFT AND DUMP OPERATION  
MAX. DUMP HEIGHT IS 116"  
MIN. DUMP HEIGHT IS 60"  
OVERALL WIDTH IS 51"  
OVERALL LENGTH IS 82 3/8"  
LEVEL HEIGHT IS 100 3/16"  
ROTATED HEIGHT IS 194"  
DUMP ANGLE IS 40°  
UNIT IS PORTABLE  
MAX CAPACITY IS 1,000 LBS.  
3000 PSI HYD. COMPONENT RATING  
DURABLE LIQUID PAINT BLUE FINISH FRAME  
TOUGH BAKED IN POWDER COATED  
YELLOW FINISH CHUTE  
WARNING:  
CHECK LOCAL AND STATE CODES!

**SPECIAL FEATURES**  
NONE

DIMENSION TOLERANCE ± 1/4"



PLEASE CIRCLE SPECIFICATIONS:

POWER	AC	* DC	* AIR/OIL
MOTOR VOLTAGE	115	208	230 460
DEDICATED CIRCUIT REQUIRED			
MOTOR PHASE	SINGLE	THREE	
CONTROL	HAND	* FOOT	
~ ALL BATTERY CHARGERS ARE 115V AC ~			
BATTERY CHRG.	REMOTE	ON-BOARD	
CHRG. INDICATOR	YES	NO	

\* AVAILABLE AT ADDITIONAL COST

APPROVAL

I, THE UNDERSIGNED, AGREE THAT THE PRODUCT AS REPRESENTED SATISFIES DESIGN AND DIMENSION REQUIREMENTS. I ALSO ACKNOWLEDGE MY DUTY TO CONFIRM PRODUCT AND INSTALLATION COMPLIANCE WITH ALL APPLICABLE FEDERAL, STATE AND LOCAL REGULATIONS AND STANDARDS.  
**UNITS REQUIRING APPROVAL DRAWINGS OR MODIFIED ARE NON-RETURNABLE**  
[ ] As drawn [ ] As marked  
Signed: \_\_\_\_\_ Date: \_\_\_\_\_  
Printed Name: \_\_\_\_\_  
**LEAD TIME WILL START UPON RECEIPT OF SIGNED APPROVAL DRAWING**

DISTRIBUTOR'S NAME:		P.O.#
VESTIL MANUFACTURING		X
DRAWN BY: CA		W.O.#
DATE: 09/02/2011		X
REFERENCE: X	SCALE: 1:40	SALES: X
QUOTED LEAD TIME: X	QUOTE # X	FILE NAME: 09-007-107