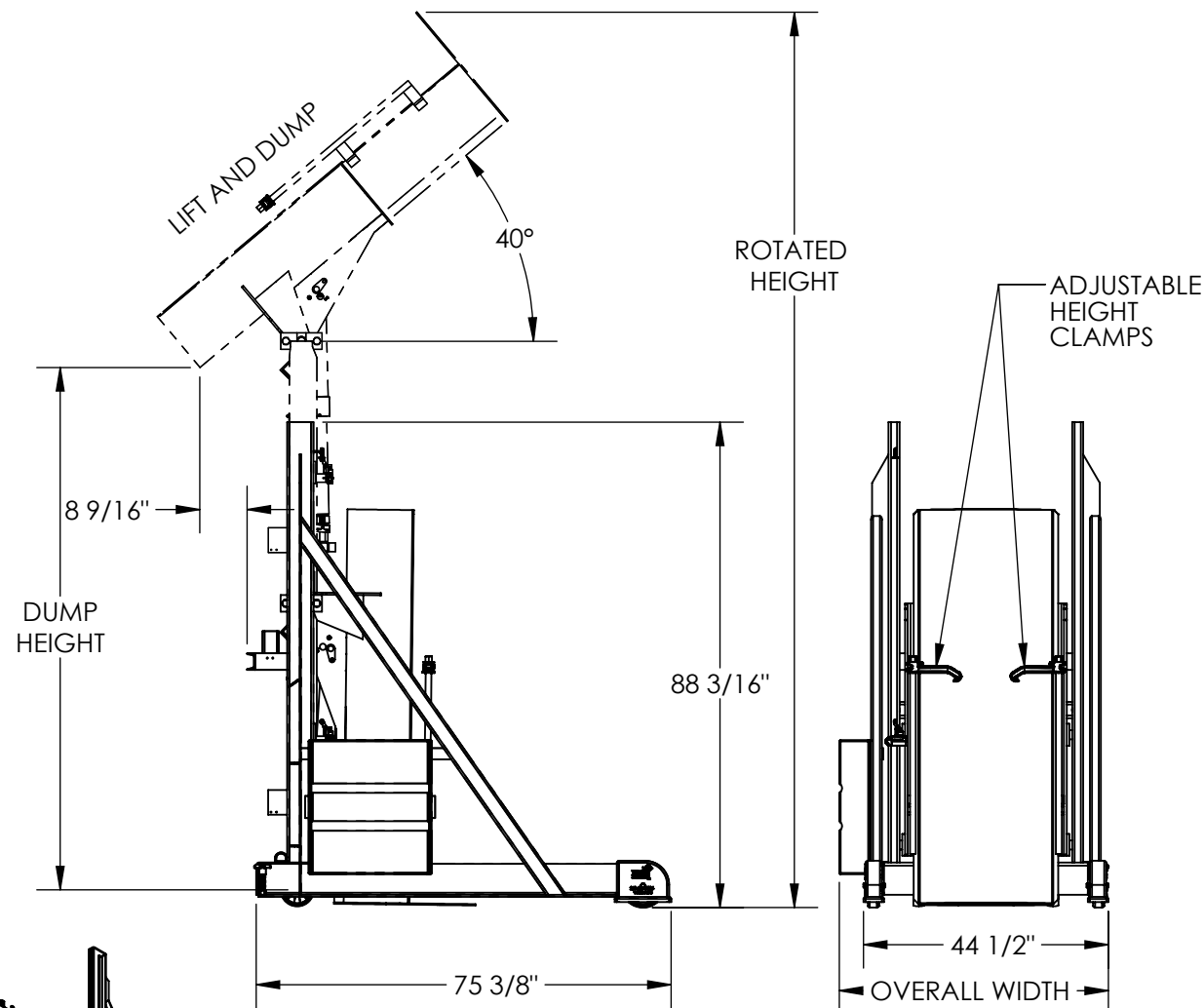


PORTABLE LIFT-AND-DUMP HYDRAULIC DRUM DUMPER - HLD-94-10-P

APPROX WEIGHT: 1194.09 lbs.
DOES NOT INCLUDE WEIGHT OF POWER OR PACKAGING!!!

*** ANY ADDITIONS, DELETIONS, OR OMISSIONS MUST BE CORRECTED ON THIS DRAWING AS THIS DRAWING WILL BE CONSIDERED ALL INCLUSIVE ***

ALL GRAPHICS PROVIDED ARE FOR REFERENCE ONLY. IF CERTAIN DIMENSIONS ARE CRITICAL PLEASE VERIFY THOSE DIMENSIONS WITH YOUR SALESPERSON



STANDARD FEATURES

MODEL NUMBER IS HLD-94-10-P
LIFT AND DUMP DESIGN
INDEPENDENT LIFT AND DUMP OPERATION
MAX. DUMP HEIGHT IS 94"
MIN. DUMP HEIGHT IS 48"
OVERALL WIDTH IS 51"
OVERALL LENGTH IS 75 3/8"
LEVEL HEIGHT IS 88 3/16"
OVERALL ROTATED HEIGHT IS 163"
DUMP ANGLE IS 40°
UNIT IS PORTABLE
MAX CAPACITY IS 1,000 LBS.
3000 PSI HYD. COMPONENT RATING
DURABLE LIQUID PAINT BLUE FINISH FRAME
TOUGH BAKED IN POWDER COATED
YELLOW FINISH CHUTE

WARNING:
CHECK LOCAL AND STATE CODES!

SPECIAL FEATURES

NONE

DIMENSION TOLERANCE $\pm 1/4"$

PLEASE CIRCLE SPECIFICATIONS:

POWER	AC	* DC	* AIR/OIL
MOTOR VOLTAGE	115	208	230 460
DEDICATED CIRCUIT REQUIRED			
MOTOR PHASE	SINGLE	THREE	
CONTROL	HAND	* FOOT	
~ ALL BATTERY CHARGERS ARE 115V AC ~			
* BATTERY CHRG.	REMOTE	ON-BOARD	
* CHRG. INDICATOR	YES	NO	

* AVAILABLE AT ADDITIONAL COST

APPROVAL

I, THE UNDERSIGNED, AGREE THAT THE PRODUCT AS REPRESENTED SATISFIES DESIGN AND DIMENSION REQUIREMENTS. I ALSO ACKNOWLEDGE MY DUTY TO CONFIRM PRODUCT AND INSTALLATION COMPLIANCE WITH ALL APPLICABLE FEDERAL, STATE AND LOCAL REGULATIONS AND STANDARDS.
UNITS REQUIRING APPROVAL DRAWINGS OR MODIFIED ARE NON-RETURNABLE
[] As drawn [] As marked

Signed: _____ Date: _____

Printed Name: _____

LEAD TIME WILL START UPON RECEIPT OF SIGNED APPROVAL DRAWING

DISTRIBUTOR'S NAME:		P.O.#
VESTIL MANUFACTURING		X
DRAWN BY: CA		W.O.#
DATE: 09/02/2011		X
REFERENCE: X	SCALE: 1:34	SALES: X
QUOTED LEAD TIME: X	QUOTE # X	FILE NAME:
		09-007-106