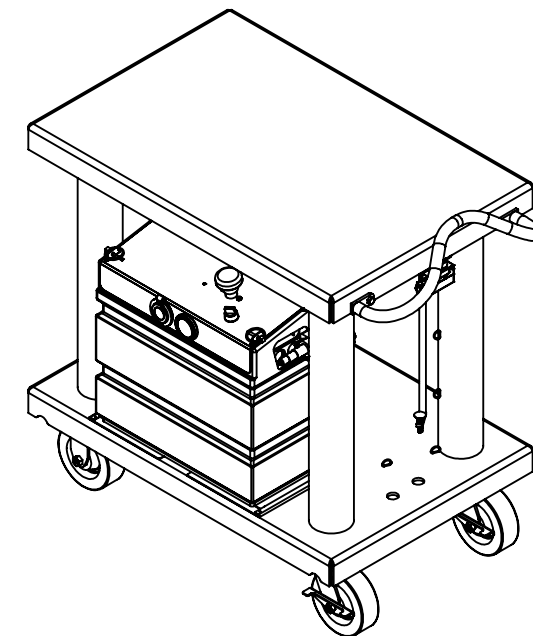
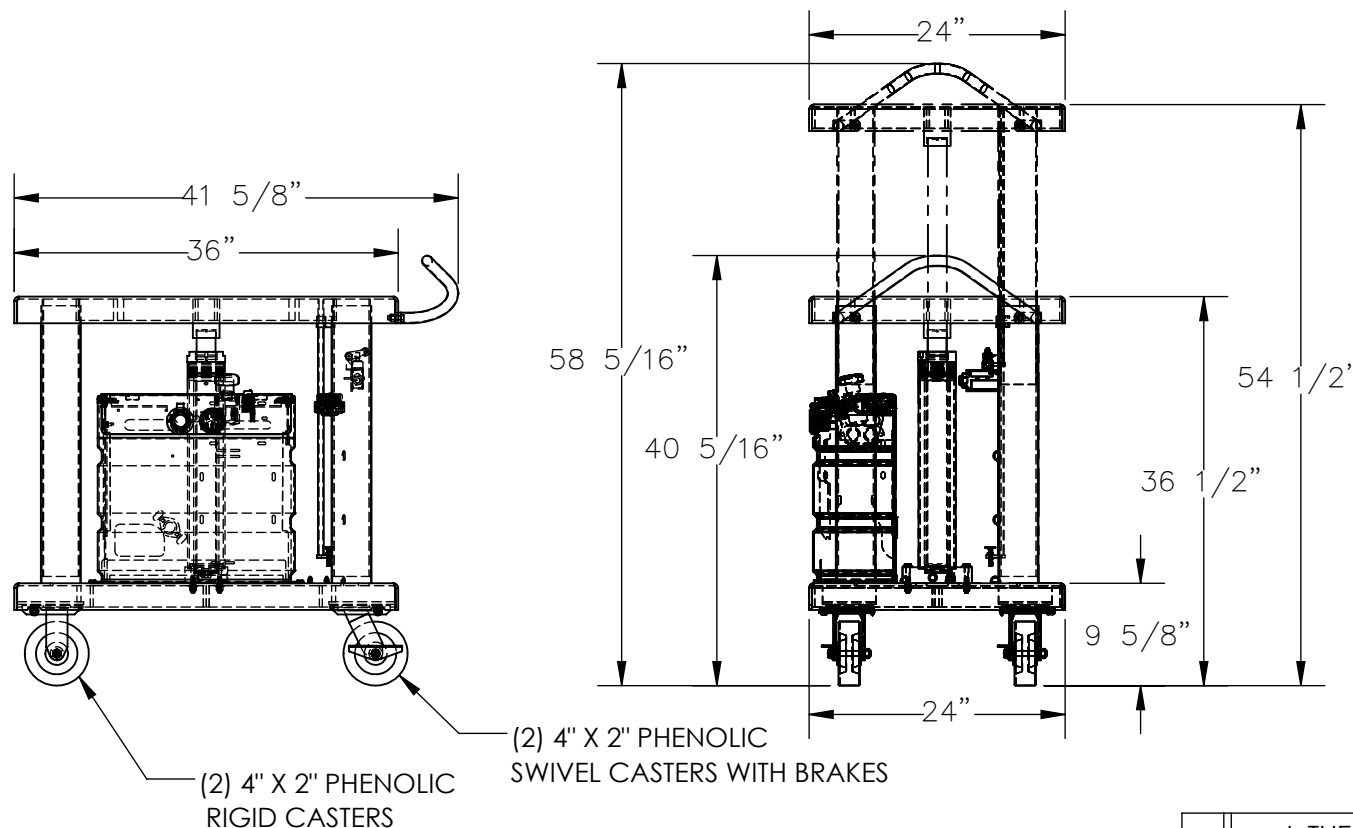


HYDRAULIC POST TABLE - HT-60-2436-DC

APPROX WEIGHT: 393.41 lbs.
DOES NOT INCLUDE WEIGHT OF POWER OR PACKAGING!!!

*** ANY ADDITIONS, DELETIONS, OR OMISSIONS MUST BE CORRECTED ON THIS DRAWING AS THIS DRAWING WILL BE CONSIDERED ALL INCLUSIVE ***
ALL GRAPHICS PROVIDED ARE FOR REFERENCE ONLY. IF CERTAIN DIMENSIONS ARE CRITICAL PLEASE VERIFY THOSE DIMENSIONS WITH YOUR SALESPERSON



DIMENSION TOLERANCE $\pm 1/4"$

STANDARD FEATURES

MODEL NUMBER IS HT-60-2436-DC
MAX CAPACITY IS 6,000 LBS.
OVERALL WIDTH: 24"
USABLE WIDTH: 24"
OVERALL LENGTH: 41 5/8"
USABLE LENGTH: 36"
RAISED HEIGHT: 54 1/2"
LOWERED HEIGHT: 36 1/2"
OVERALL RAISED HEIGHT: 58 5/16"
OVERALL LOWERED HEIGHT: 40 5/16"
HANDHELD PUSH BUTTON CONTROL
W/ 8ft EXTENDED COIL CORD
(2) PHENOLIC RIGID CASTERS
(2) PHENOLIC SWIVEL CASTERS WITH BRAKES
HYDRAULIC HOSES NOT SHOWN
DURABLE BAKED IN POWDER COATED BLUE FINISH

SPECIAL FEATURES

NONE

12V DC POWER

ON-BOARD BATTERY
INDICATOR & CHARGER
CONTACT FACTORY FOR
OTHER POWER OPTIONS

APPROVAL

I, THE UNDERSIGNED, AGREE THAT THE PRODUCT AS REPRESENTED SATISFIES DESIGN AND DIMENSION REQUIREMENTS. I ALSO ACKNOWLEDGE MY DUTY TO CONFIRM PRODUCT AND INSTALLATION COMPLIANCE WITH ALL APPLICABLE FEDERAL, STATE AND LOCAL REGULATIONS AND STANDARDS.
UNITS REQUIRING APPROVAL DRAWINGS OR MODIFIED ARE NON-RETURNABLE
[] As drawn [] As marked

Signed: _____ Date: _____

Printed Name: _____

LEAD TIME WILL START UPON RECEIPT OF SIGNED APPROVAL DRAWING

DISTRIBUTOR'S NAME:		P.O.#
VESTIL MANUFACTURING		X
DRAWN BY:	DATE:	W.O.#
CRH	3/11/2020	X
REFERENCE:	SCALE:	SALES:
X	1:18	X
QUOTED LEAD TIME:	QUOTE #	FILE NAME:
X	X	21-007-148-001