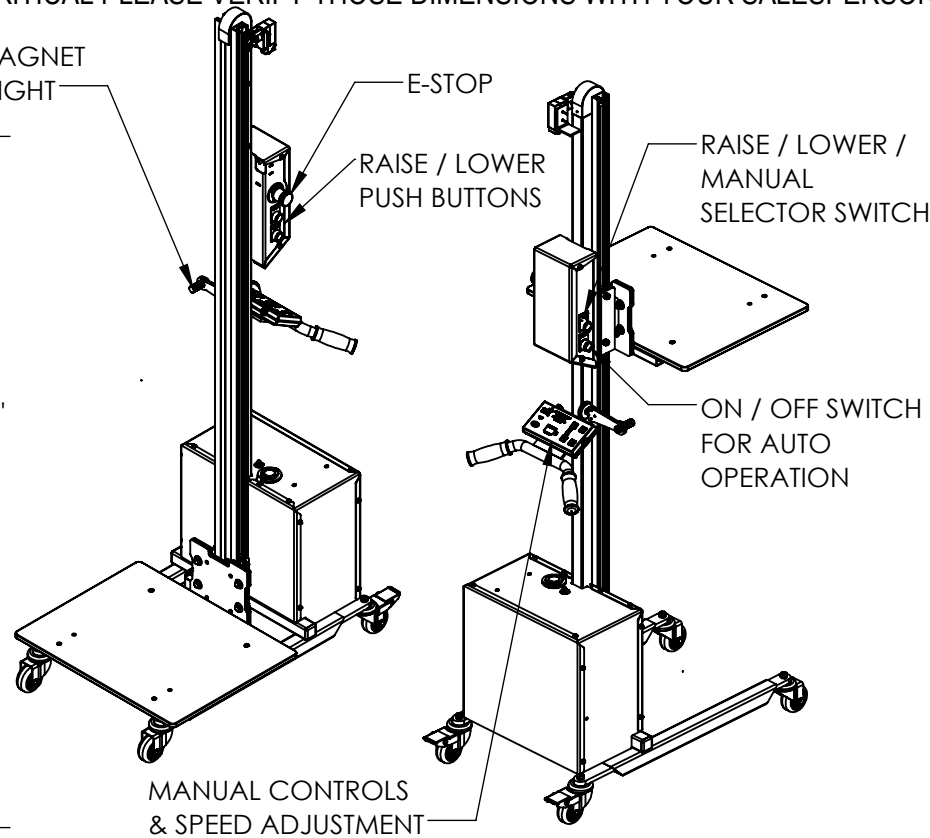
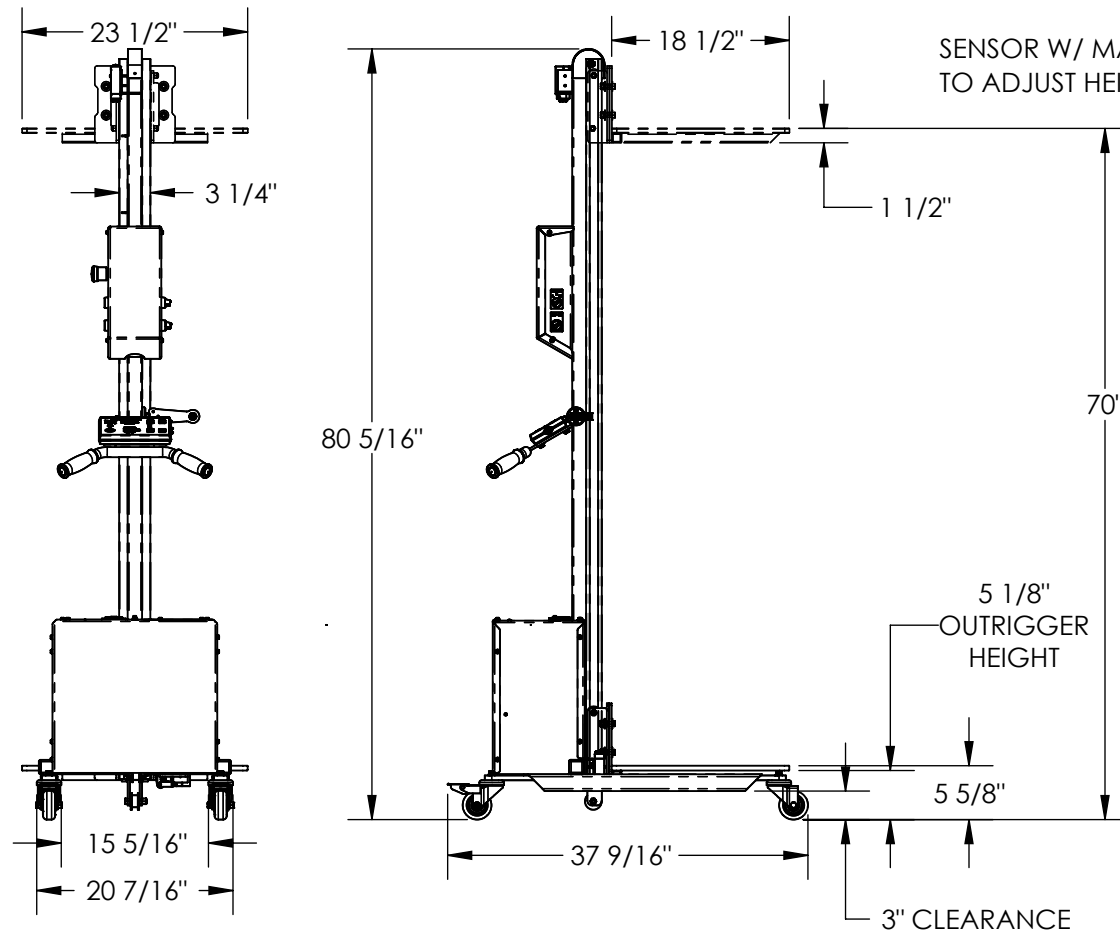


# DC POWERED QUICK LIFT - PEL-100S-D3-AHI

APPROX WEIGHT: 193.00 lbs.  
DOES NOT INCLUDE WEIGHT OF POWER OR PACKAGING!!!

\*\*\* ANY ADDITIONS, DELETIONS, OR OMISSIONS MUST BE CORRECTED ON THIS DRAWING AS THIS DRAWING WILL BE CONSIDERED ALL INCLUSIVE \*\*\*

ALL GRAPHICS PROVIDED ARE FOR REFERENCE ONLY. IF CERTAIN DIMENSIONS ARE CRITICAL PLEASE VERIFY THOSE DIMENSIONS WITH YOUR SALESPERSON



DIMENSION TOLERANCE  $\pm 1/4"$

## STANDARD FEATURES

- MODEL NUMBER: PEL-100S-D3-AHI
- STEEL CONSTRUCTION
- CAPACITY: 175 LBS
- PLATFORM WIDTH: 23 1/2"
- PLATFORM LENGTH: 18 1/2"
- LOWERED PLATFORM HEIGHT: 5 5/8"
- RAISED PLATFORM HEIGHT: 70"
- OVERALL SIZE 23 1/2"W x 37 9/16"L x 80 5/16"H
- AUTO-HEIGHT INDEXING WITH ADJUSTABLE HEIGHT SENSOR
- 3-POSITION SELECTOR SWITCH (AUTO RAISE / AUTO LOWER / MANUAL MODE)
- AUTO RAISE (LOAD WILL RAISE TO SENSOR HEIGHT)
- AUTO LOWER (LOAD WILL LOWER TO SENSOR HEIGHT)
- MANUAL (CONTINUOUS PUSH OPERATION RAISE AND LOWER)
- Ø 3" POLY-ON-POLY STEM CASTERS (2 SWIVEL W/ BRAKES & 2 SWIVEL)
- DURABLE BAKED IN POWDER COATED BLUE FINISH

## 24V DC POWER

ON-BOARD BATTERY  
INDICATOR & CHARGER  
CONTACT FACTORY FOR  
OTHER POWER OPTIONS

## SPECIAL FEATURES

NONE

**APPROVAL**

I, THE UNDERSIGNED, AGREE THAT THE PRODUCT AS REPRESENTED SATISFIES DESIGN AND DIMENSION REQUIREMENTS. I ALSO ACKNOWLEDGE MY DUTY TO CONFIRM PRODUCT AND INSTALLATION COMPLIANCE WITH ALL APPLICABLE FEDERAL, STATE AND LOCAL REGULATIONS AND STANDARDS.

**UNITS REQUIRING APPROVAL DRAWINGS OR MODIFIED ARE NON-RETURNABLE**

[ ] As drawn [ ] As marked

Signed: \_\_\_\_\_ Date: \_\_\_\_\_

Printed Name: \_\_\_\_\_

LEAD TIME WILL START UPON RECEIPT OF SIGNED APPROVAL DRAWING

DISTRIBUTOR'S NAME:		P.O.#
VESTIL MANUFACTURING		X
DRAWN BY: TEN		W.O.#
DATE: 5/27/24		X
REFERENCE: X	SCALE: 1:20	SALES: X
QUOTED LEAD TIME: X	QUOTE #	FILE NAME:
	X	21-007-038-001