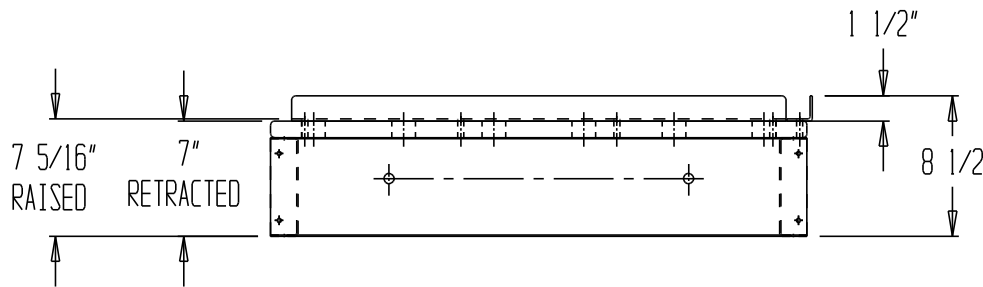
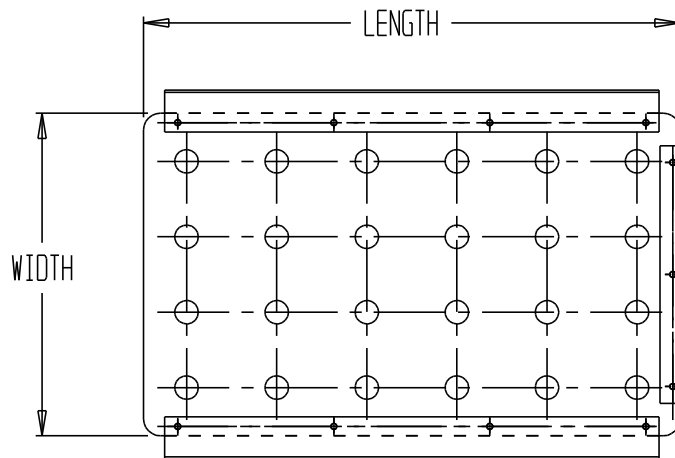


# "POP UP" BALL TRANSFER PLATFORM - POPUP-1932



DIMENSION TOLERANCE  $\pm 1/2$ "

## STANDARD FEATURES

- "POP UP" BALL TRANSFER PLATFORM MODEL NUMBER POPUP-1932
- OVERALL WIDTH IS 19 INCHES
- OVERALL LENGTH IS 32 INCHES
- BALL SPACING IS  $4-3/8 \times 5-1/4$  (W x L) INCHES
- CAPACITY IS 250 LBS.
- CHROME FINISH
- EASY HANDLE MECHANISM TO RAISE AND LOWER BALLS

Any additions, deletions or omissions must be corrected on this drawing, as this drawing will be considered all inclusive.

All graphics provided are for reference only. If certain dimensions are critical please verify those dimensions with your salesperson

## SPECIAL FEATURES

<b>A P P R O V A L</b>	I, THE UNDERSIGNED, AGREE THAT THE PRODUCT AS REPRESENTED SATISFIES DESIGN & DIMENSION REQUIREMENTS. I ALSO ACKNOWLEDGE MY DUTY TO CONFIRM PRODUCT & INSTALLATION COMPLIANCE WITH ALL APPLICABLE FEDERAL, STATE AND LOCAL REGULATIONS & STANDARDS.	
	<b>ANY MODIFIED UNITS ARE NON-RETURNABLE</b>	
	[ ] As drawn [ ] As marked	
	Signed: _____	Date: _____
	Printed Name: _____	
LEAD TIME WILL START UPON RECEIPT OF SIGNED APPROVAL DRAWING		

FOR INTERNAL USE ONLY PROJECT SIGN OFF	
SALES	
ENG	
FAB.	
POWER	

DISTRIBUTOR'S NAME: <b>VESTIL MFG</b>		P.O.#: _
		W.O.#: _
DRAWN BY: _____	DATE: _	SALES: _
REFERENCE: _	SCALE: _	DRWG./FILE NAME:
QUOTED LEADTIME: _	QUOTE #: _	30-007-032