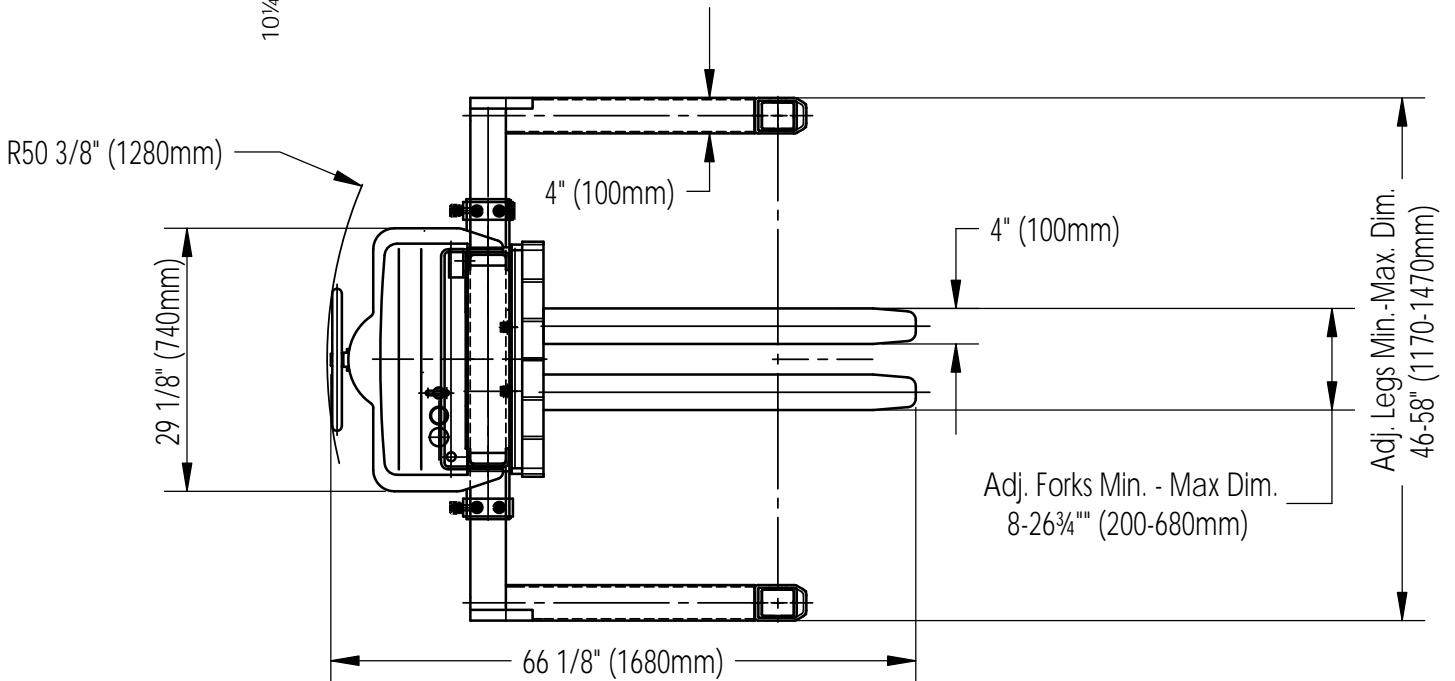
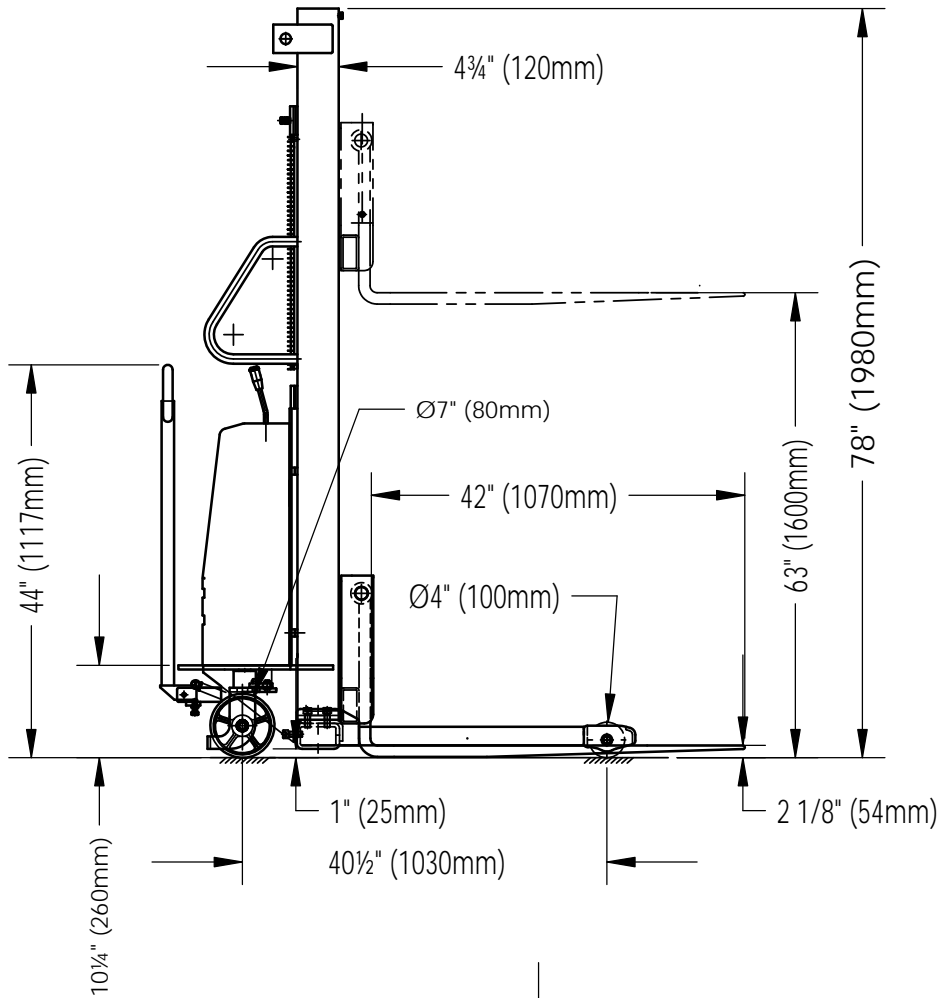


SL-63-AA - SEMI-ELECTRIC STACKER - ADJUSTABLE FORKS & ADJUSTABLE LEGS

Specifications

Model # SL-63-AA
 Capacity (UDL): 2,000 lbs
 Lift height: 63"
 Lowered height: 2 1/8"
 Adjustable forks & adjustable legs
 Mast: Single
 Overall mast height: 78"
 Steering wheel: Ø7x2"
 Front wheel: Ø4x2.9"

Mast: Double
 Safety Shield: Yes
 Lift Motor: DC12V/1.8Kw
 Battery: (1)12V/140Ah



VESTIL MANUFACTURING CORP.		
DRAWN BY: TM	DATE: 01/30/14	
Reference:		DRWG./FILE NAME: SL-63-AA