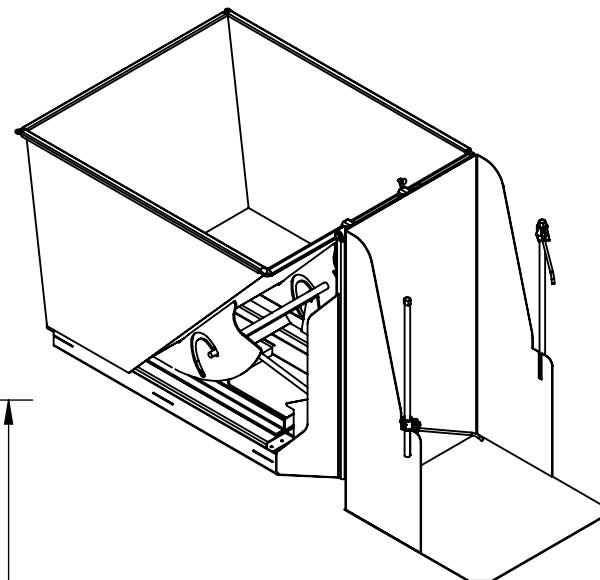
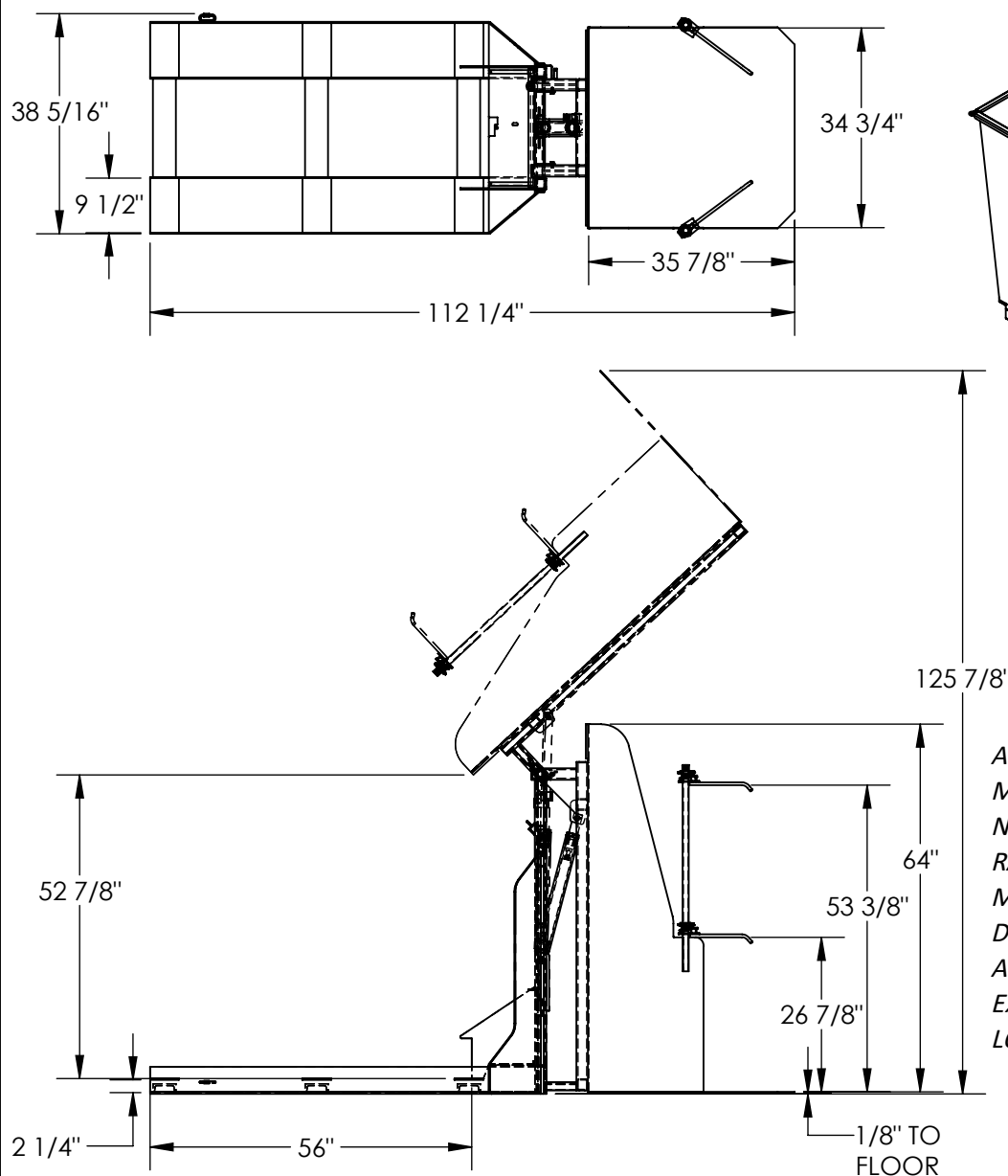


# TRASH CAN DUMPER - TCD-HLD-400

APPROX WEIGHT: 683.62 lbs.  
DOES NOT INCLUDE WEIGHT OF POWER OR PACKAGING!!!

\*\*\*ANY ADDITIONS, DELETIONS, OR OMISSIONS MUST BE CORRECTED ON THIS DRAWING AS THIS DRAWING WILL BE CONSIDERED ALL INCLUSIVE\*\*\*



3-D VIEW OF TCD-HLD-400  
WITH D-200-LD SHOWN  
FOR REFERENCE ONLY

APPROX. WEIGHT / LOST LOAD = 683.62 LBS  
MINIMUM EFFECTIVE THICKNESS = LESS THAN 1"  
NEVER EXCEED LOAD CENTER  
RATING PER FORKTRUCK  
MANUFACTURERS GUIDELINES.  
DO NOT USE THIS FORK TRUCK  
ATTACHMENT IF LOAD WILL  
EXCEED FORK TRUCK MANUFACTURER'S  
LOAD CENTER RATING

FOR INTERNAL USE ONLY PROJECT SIGN OFF	
SALES	
ENG.	
FAB.	
POWER	

ALL GRAPHICS PROVIDED ARE FOR REFERENCE ONLY. IF CERTAIN DIMENSIONS ARE CRITICAL PLEASE VERIFY THOSE DIMENSIONS WITH YOUR SALESPERSON

## STANDARD FEATURES

- MODEL NUMBER IS TCD-HLD-400
- OVERALL WIDTH IS 38 5/16"
- USABLE CHUTE WIDTH IS 34 3/4"
- OVERALL LENGTH IS 112 1/4"
- USABLE CHUTE LENGTH IS 35 7/8"
- LOWERED HEIGHT IS 64"
- OVERALL ROTATED HEIGHT IS 125 7/8"
- MAX CAPACITY IS 400 LBS.
- DUMPING CHUTE IS DURABLE LIQUID PAINT YELLOW FINISH
- HOPPER ATTACHMENT IS DURABLE LIQUID PAINT BLUE FINISH
- WORKS WITH 2 CUBIC YARD "D" STYLE HOPPERS
- HOPPERS SOLD SEPARATELY
- POWER UNIT: 12 V DC WITH ON-BOARD CHARGER
- CONTROL: HAND

## SPECIAL FEATURES

NONE

DIMENSION TOLERANCE  $\pm 1/4"$

APPROVAL

I, THE UNDERSIGNED, AGREE THAT THE PRODUCT AS REPRESENTED SATISFIES DESIGN AND DIMENSION REQUIREMENTS. I ALSO ACKNOWLEDGE MY DUTY TO CONFIRM PRODUCT AND INSTALLATION COMPLIANCE WITH ALL APPLICABLE FEDERAL, STATE AND LOCAL REGULATIONS AND STANDARDS.  
**UNITS REQUIRING APPROVAL DRAWINGS OR MODIFIED ARE NON-RETURNABLE**

[ ] As drawn [ ] As marked

Signed: \_\_\_\_\_ Date: \_\_\_\_\_

Printed Name: \_\_\_\_\_

LEAD TIME WILL START UPON RECEIPT OF SIGNED APPROVAL DRAWING

DISTRIBUTOR'S NAME:		P.O.#
VESTIL MANUFACTURING		X
DRAWN BY: JWW		W.O.#
DATE: 6/6/19		X
REFERENCE: X	SCALE: 1:32	SALES: X
QUOTED LEAD TIME: X	QUOTE # X	FILE NAME:
		34-007-046