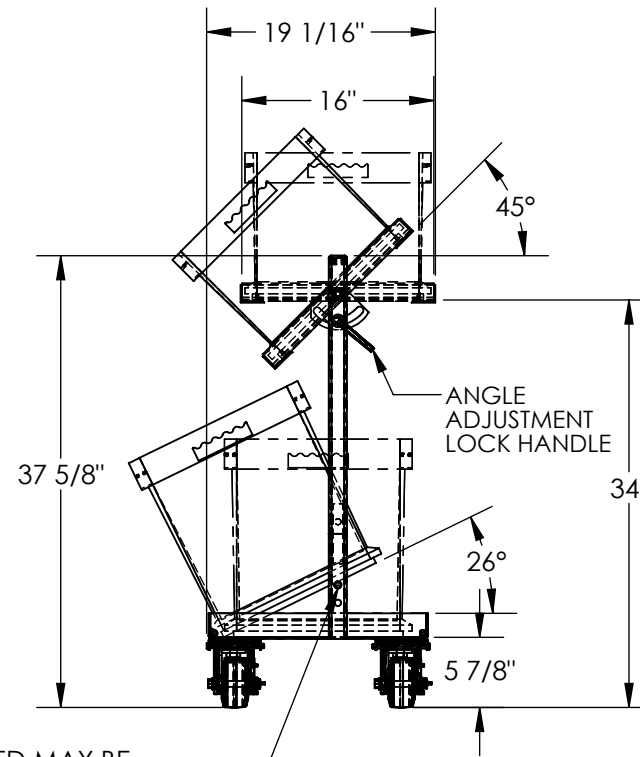
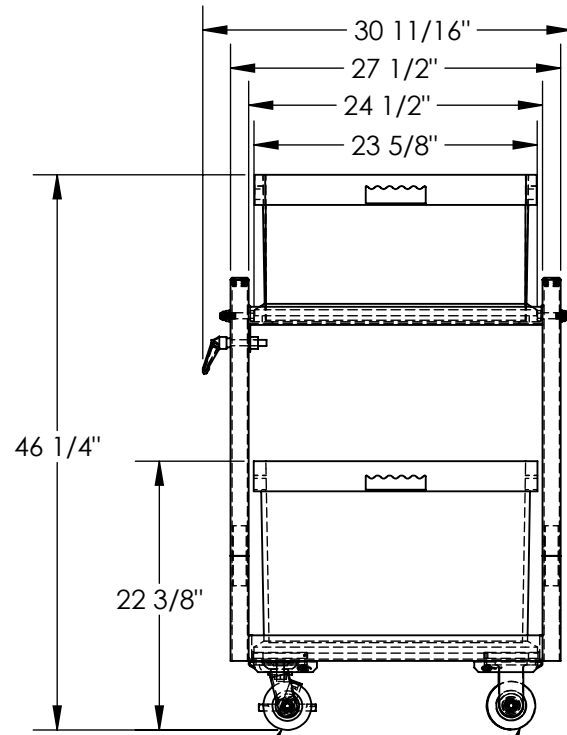


MULTI-TIER STOCK CART - TSCT-2B

APPROX WEIGHT: 70.10 lbs.
 DOES NOT INCLUDE WEIGHT OF POWER OR PACKAGING!!!

*** ANY ADDITIONS, DELETIONS, OR OMISSIONS MUST BE CORRECTED ON THIS DRAWING AS THIS DRAWING WILL BE CONSIDERED ALL INCLUSIVE ***

ALL GRAPHICS PROVIDED ARE FOR REFERENCE ONLY. IF CERTAIN DIMENSIONS ARE CRITICAL PLEASE VERIFY THOSE DIMENSIONS WITH YOUR SALESPERSON



3-D VIEW
 SHOWN WITH LOWER
 PINS INSTALLED

DIMENSION TOLERANCE $\pm 1/4"$

$\varnothing 4"$ X 2" MOLD-ON-RUBBER CASTERS
 QTY. 2 - SWIVEL W/ BRAKE

PINS PROVIDED MAY BE
 INSERTED INTO THE HOLES TO
 SUPPORT THE BOTTOM
 OF THE LOWER BIN AND TILT IT
 FORWARD. FOR A LEVEL
 LOWER BIN PINS MAY BE STORED
 IN THE BASE FRAME

$\varnothing 4"$ X 2" MOLD-ON-RUBBER CASTERS
 QTY. 2 - RIGID

STANDARD FEATURES

MODEL NUMBER IS TSCT-2B

OVERALL HEIGHT: 46 1/4"

OVERALL WIDTH: 30 11/16"

OVERALL DEPTH: 19 1/16"

UPRIGHT TO UPRIGHT WIDTH:

USABLE SHELF SIZE: 16" x 23 5/8"

UNIFORM STATIC CAPACITY: 200 LBS

CAPACITY PER SHELF: 100 LBS (MUST BE LOADED BOTTOM UP)

SHELF TILT: 26°

INCLUDES (2) 4" x 2" RIGID CASTERS
 & (2) 4" x 2" SWIVEL W/BRAKE CASTERS

INCLUDES (1) 15 1/2" X 23 1/2" X 16 1/2" BIN
 AND (1) 15 1/2" X 23 1/2" X 12 1/2" BIN

TOUGH BAKED IN POWDER COATED
 BLUE FINISH

SPECIAL FEATURES

NONE

APPROVAL	I, THE UNDERSIGNED, AGREE THAT THE PRODUCT AS REPRESENTED SATISFIES DESIGN AND DIMENSION REQUIREMENTS. I ALSO ACKNOWLEDGE MY DUTY TO CONFIRM PRODUCT AND INSTALLATION COMPLIANCE WITH ALL APPLICABLE FEDERAL, STATE AND LOCAL REGULATIONS AND STANDARDS.	
	UNITS REQUIRING APPROVAL DRAWINGS OR MODIFIED ARE NON-RETURNABLE	
	[] As drawn [] As marked	
	Signed: _____	Date: _____
Printed Name: _____		
LEAD TIME WILL START UPON RECEIPT OF SIGNED APPROVAL DRAWING		

DISTRIBUTOR'S NAME:		P.O.#
VESTIL MANUFACTURING		X
DRAWN BY: NWS		DATE: 12/26/2012
REFERENCE: X		SCALE: 1:16
QUOTED LEAD TIME: X		QUOTE # X
		SALES: X
		FILE NAME: 16-007-352