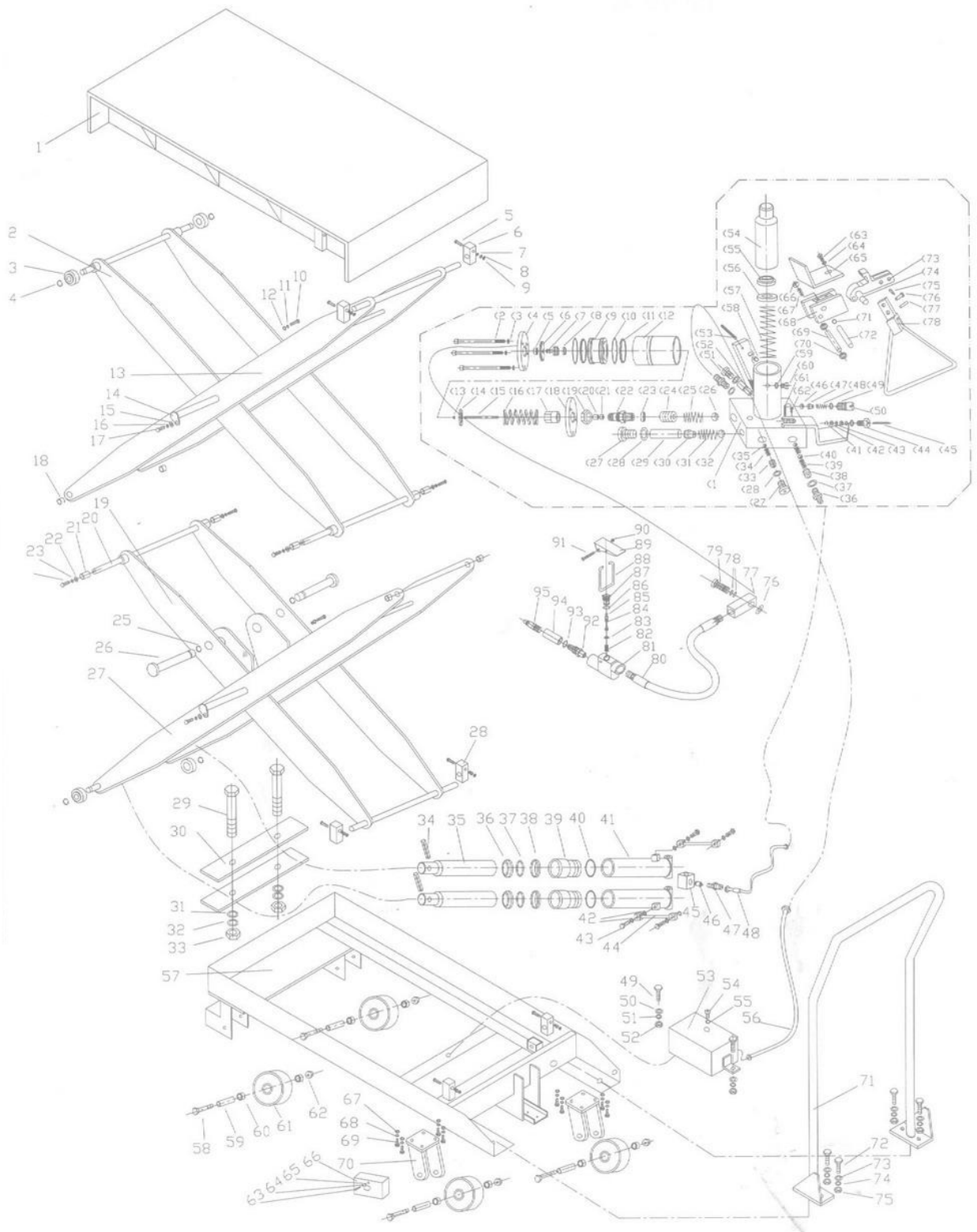


**AIR - 1500 - D (1500 LBS. AIR/HYDRAULIC COMBO DOUBLE SCISSOR CART)**



## AIR-1500-D (Pneumatic and Hydraulic Table Truck)

No.	Description	Q'ty	No.	Description	Q'ty	No.	Description	Q'ty
1	Table	1	56	O-ring	1	(45	Top Rod	1
2	Link Assembly	1	57	Plug	1	(46	Steel Ball	1
3	C-ring	4	58	C-ring	1	(47	Spring Seat	1
4	Bushing	4	59	Switch Wrench	1	(48	Adjust Pressure Spring	1
5	Shaft	4	60	Set Nut	1	(49	O-ring	1
6	C-ring	4	61	Screw	1	(50	Adjust Pressure Spring	1
7	Up Roller Guide	2	62	Plug Tie-in	1	(51	Plug	1
8	Rubber Cover	2	63	O-ring	1	(52	Lowering Valve	1
9	Support Rod	2	64	Enter Air Mouth	1	(53	Spring Pin	1
10	Washer	2	65	Tie-in	1	(54	Big Pump Piston	1
11	Set Nut	2				(55	Dust Cover	1
12	Down Roller Guide	2	(1	Valve	1	(56	Oil Seal	1
13	Frame	1	(2	Hex Cap Bolt	3	(57	Big Spring	1
14	Hex Cap Bolt	2	(3	Spring Washer	3	(58	Bushing	1
15	Shaft Cover	2	(4	Top Nut	1	(59	O-ring	1
16	Dust Cover	2	(5	Rubber Cover	1	(60	Hex Cap Bolt	1
17	Bearing	8	(6	Piston Cover	1	(61	Spring Pin	1
18	Wheel	7	(7	Small Piston	1	(62	Screw	1
19	Set Nut	4	(8	Oil Seal	1	(63	Screw	1
20	Hex Cap Bolt	8	(9	Big Piston	1	(64	Flat Washer	1
21	Flat Washer	8	(10	O-ring	2	(65	Stop Block	1
22	Swivel Wheel Holder	2	(11	Rubber O-ring	2	(66	Steel Ball	1
23	Spring Washer	8	(12	Cylinder Body	1	(67	Spring	1
24	Hex Cap Bolt	8	(13	Hex Cap Nut	1	(68	Link Block	1
25	Hex Cap Bolt	2	(14	Spring Seat	1	(69	Shaft	2
26	Brake Pedal	2	(15	Small Lift Piston	1	(70	Bushing	1
27	Brake Slice	2	(16	Big Spring	1	(71	Bushing	1
28	Protect Cover	2	(17	Plug Cover	1	(72	Shaft	1
29	Flat Washer	2	(18	Cylinder Body	1	(73	Press Wheel Seat	1
30	Spring Washer	2	(19	Hex Cap Nut	1	(74	Press Wheel	1
31	Semicircle Screw	2	(20	Bushing	1	(75	Pin	1
32	Bushing	2	(21	Oil Seal	1	(76	Shaft	1
33	Handle	1	(22	Pump Cylinder Body	1	(77	Shaft	1
34	Big Washer	2	(23	O-ring	1	(78	Foot Pedal Petiole	1
35	Spring Washer	2	(24	Plug Cover	1	(79	Cylinder	1
36	Hex Cap Bolt	2	(25	Taper Spring	1	(80	Safe Valve	1
37	Hex Cap Bolt	2	(26	Steel Ball	1	(81	O-ring	1
38	Flat Washer	2	(27	Hex Cap Plug	2	(82	Oil Pipe Tie-in	1
39	Spring Washer	2	(28	O-ring	2	(83	High Press Oil Pipe	1
40	Hex Cap Nut	2	(29	Fix Shaft	1	(84	C-ring	4
41	Oil Box	1	(30	Spring Seat	1	(85	Shaft	1
42	Hex Cap Bolt	2	(31	Spring	1	(86	Nut	1
43	Spring Washer	2	(32	Steel Ball	1	(87	Washer	1
44	Hex Cap Nut	2	(33	Plug Cover	1	(88	Oil Seal	1
45	Oil Pipe	1	(34	Taper Spring	1	(89	Piston	1
46	Lock Pin	1	(35	Steel Ball	1	(90	Lift Piston	1
47	Air Pipe Tie-in	1	(36	Oil Pipe Tie-in	2	(91	Shaft	1
48	Hydraulic hose	1	(37	O-ring	2	(92	O-ring	1
49	Plug	1	(38	Plug	1	(93	Top Nut	1
50	Air Pipe	1	(39	Spring	1	(94	Plug	1
51	Enter Air	1	(40	Steel Ball	1	(95	O-ring	1
52	Spring	1	(41	C-ring	1	(96	Oil Seal	1
53	Oil Seal	1	(42	O-ring	2	(97	O-ring	1
54	Valve Core	1	(43	O-ring	1	(98	Dust Cover	1
55	O-ring	1	(44	Plug	1			