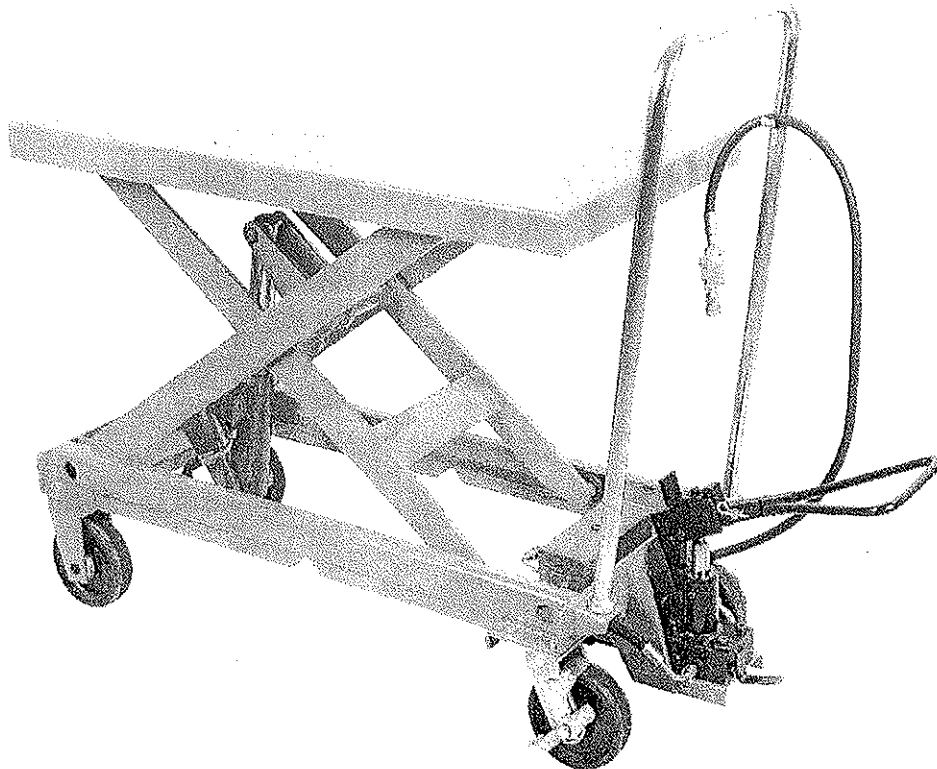


**DOUBLE-FUNCTION TABLE TRUCK
PNEUMATIC AND HYDRAULIC**



MODEL: AIR-1750-AIR/PSS

DOUBLE-FUNCTION TABLE TRUCK

PNEUMATIC AND HYDRAULIC

I. Use & applicable range and Characteristics:

Our company takes the high technique from international to make this new product. Its characteristics is: you can take the pneumatic installation to lift the table when there is air pump. You can take hand-hydraulic installation to lift the table when there is no air pump. This new products has double function with pneumatic and hydraulic lifting. But when there is air pump, you can pneumatic installation is more economical and safe than electric installation.

II. Basic Data

Model	AIR-1750-AIR/PSS
Load Capacity (kg)	750
Lowest Height(mm)	360
Lift Height (mm)	1000
Table Dimensions (mm)	1000X512X55
Air Pressure (kg/cm)	≤ 6

III. Product Instruction

1. Assembly

This series products are pneumatic and hydraulic double-function table truck with load capacity 500kg. The whole carts including Hydraulic Cylinder Assembly (1), Valve Air Cylinder Assembly (2), Frame Assembly, Link Assembly and Platform Assembly. There are two swivel casters and two fix casters under the frame to support the work pressure. The valve air cylinder is installed on the frame, and the platform installed on the top of the cart. The link assembly fixed between the platform and the frame. In the middle of the two links install the hydraulic cylinder. The hydraulic cylinder connected with valve by the high pressure oil pipe.

IV. Structure

(1) Air Cylinder and Hydraulic Cylinder are the heart of the lift table truck which include two parts pneumatic lift structure and foot pedal pump lift structure. When the air cylinder with air,

the piston will draw the lift pump work and lift the table. Without the air, you can lift table by foot pedal. There are two speed to lift the cart by foot pedal. When loading the goods, you can only take slow speed to lift the table. The high pressure oil will flow into the hydraulic cylinder by oil pipe. Once the table arrives the max height, the cart will stop.

- (2) Cart Holder Assembly: The link assembly installed on the frame and installed the platform on the link. The table for the cart which lift up and down by the two links connect the hydraulic cylinder.
- (3) Discharge Structure: Step the foot pedal by foot to discharge the table, and the table will keep the some location when take away your foot. The structure has replacement installation.
- (4) Wheel Assembly: There are four casters in one cart, two swivel casters and two fix casters. The swivel casters have brake. The brake can fix the cart.

V. Pneumatic and Hydraulic System

The supply oil structure take pneumatic and hydraulic two-function. When the air cylinder has air which will push the lift pump absorb oil and press oil and to lift the table. There are two speed functions by foot pedal to lift the table. The two speed functions are both to lift the table by high pressure absorb oil. When over the rate capacity, the safe valve will open to overflow oil to avoid the system be damaged.

VI. Lubricate

1. The hydraulic system adopts machinery oil #32 and immit the ZG-5 lubricate oil into the oil mouth. Please change the oil every three month at the first half-year, and then change the oil every six month.
2. The lubricate oil should no solid matter, acidity and water.

VII. Using

1. Please install the handle and foot pedal rod before using the cart.
2. Please fix the cart by step the brake on the caster and test the cart without loading.
3. Please connect the air pipe before use the pneumatic. And open the switch of pneumatic, the table will lift up. Or you can step the foot pedal to lift the table without pneumatic.
4. When lowering down, please step the discharge foot pedal.

VIII. Warning!

1. Operate strictly according to the instruction manual.
2. Please load the goods in its rated capacity.
3. Do not allow people to sit or ride on the cart.
4. Keep feet and hand away from under the lowering table. Suggest to wear safety shoes during operation.
5. When the table lowering down, please not put the foot on the brake of the caster.

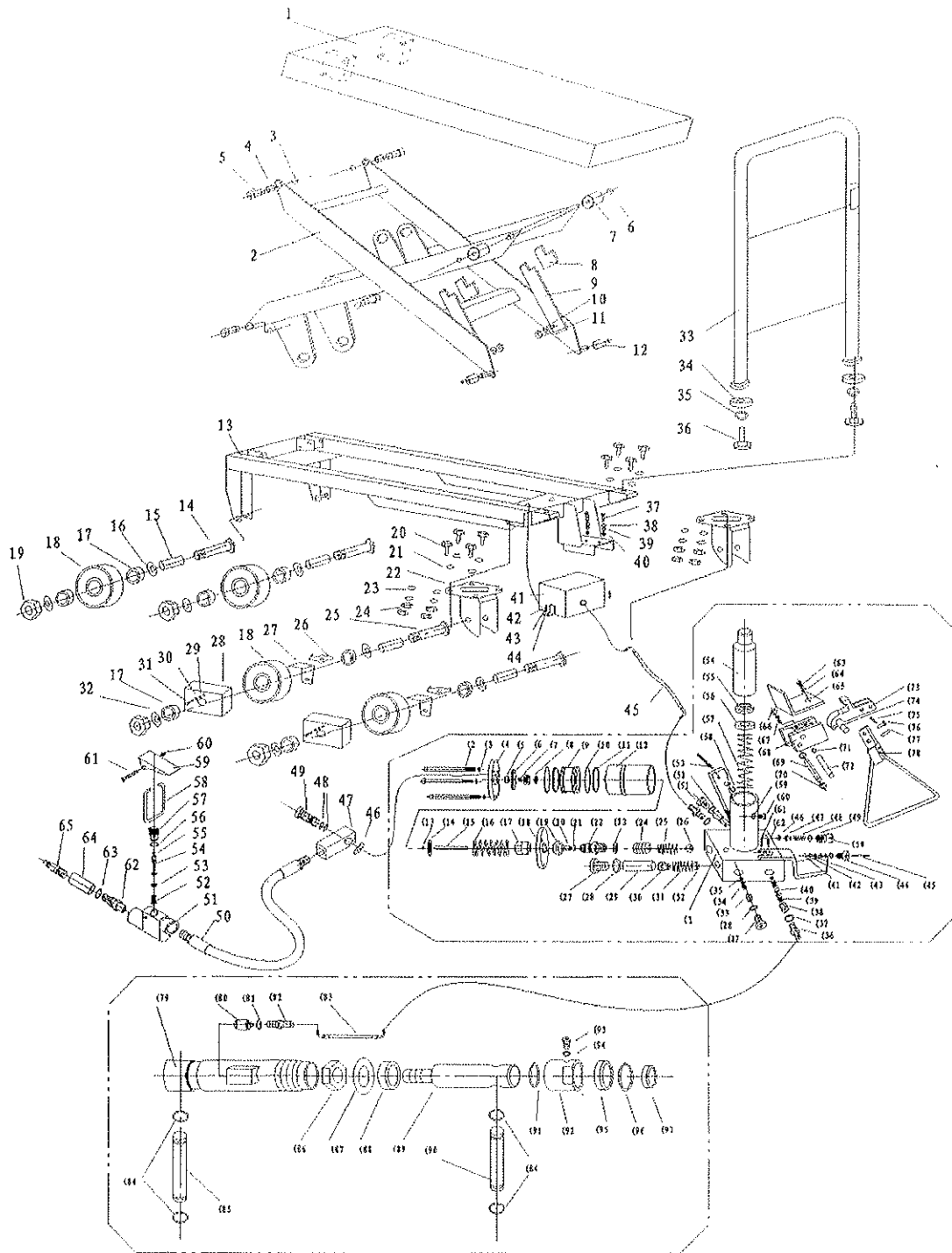
6. The goods can not put any position of the table, but on the table 80% area.
7. Do not use the cart on slop.
8. Please not move the cart when the table at the top position and with heavy goods.
9. Failure to operate the cart will cause the damage to the person health or property loss.

Maintenance and Trouble shooting

1. Keep oil clean. Check the oil reservoir in the hydraulic cylinder before operate and replenish reservoir if oil does not reach 2/3 of the capacity.
2. Trouble shooting

Trouble	Cause	Action
Table does not rise	No oil	Replenish oil
	Bring up the empty site.	Set open the M5 hex cap nut, and step the foot pedal to fix the screw.
	Check valve does not replacement.	Clean steel ball in the check valve and re-assembly.
	Single valve does not replacement	1. When the table can not lift up by pneumatic, please clean the steel ball and re-assembly. 2. When the table can not lift up by foot pedal, please clean the steel ball and re-assembly.
Table does not lowering down	The top rod of discharge single valve can not stand out.	Check the length of top rod, and re-assembly.
	The hole of lowering valve be air-logged.	Take down the lowering valve to clean carefully and then re-assembly or replace.
Oil leaks from pump cylinder	Oil seal in the pump cylinder was worn out.	Replace the oil seal UHS25 and DH25.
Hydraulic cylinder can not bearing	Oil seal in the cylinder was worn out	Replace oil seal UHS10.
	The high pressure oil pipe and the joint worn out	Replace the high pressure oil pipe.

AIR-1750-AIR/PSS



AIR/1750-AIR/PSS Pneumatic and Hydraulic Table Truck

No	Description	Qty	No	Description	Qty	No	Description	Qty
1	Table	1	45	O-ring	1	41)	Plug	1
2	Link Assembly	1	52	Plug	1	45)	Top Nut	1
3	C-ring	4	58	C-ring	1	46)	Steel Ball	1
4	Bushing	4	59	Swath Spanner	1	47)	Spring Seat	1
5	Shaft	4	60	Set Nut	1	48)	Adjust Pressure Spring	1
6	C-ring	4	61	Set Screw	1	49)	O-ring	1
7	Up Guide Roller	2	62	Plug Tie-in	1	50)	Adjust Pressure Plug	1
8	Rubber Cover	2	63	O-ring	1	51)	Plug	1
9	Support Rod	2	64	Air Mouth	1	52)	Lowering Valve	1
10	Washer	2	65	Air Mouth Tie-in	1	53)	Spring Column	1
11	Set Nut	2				54)	Big Pump Piston	1
12	Down Guide Roller	2				55)	Dust Cover	1
13	Frame Seat	1	1)	Valve	1	56)	Oil Seal	1
14	Hex Cap Bolt	2	2)	Hex Cap Bolt	3	57)	Big Spring	1
15	Shaft Cover	2	3)	Spring Washer	3	58)	Bushing	1
16	Dust Cover	2	4)	Top Nut	1	59)	O-ring	1
17	Bearing	8	5)	Rubber Cover	1	60)	Hex Cap Plug	1
18	Wheel	4	6)	Piston Cover	1	61)	Spring Column Pin	1
19	Set Nut	4	7)	Small Piston	1	62)	Screw	1
20	Hex Cap Bolt	8	8)	Oil Seal	1	63)	Screw	1
21	Flat Washer	8	9)	Big Piston	1	64)	Flat Washer	1
22	Swivel Wheel Holder	2	10)	O-ring	2	65)	Block	1
23	Spring Washer	8	11)	Rubber Cover	2	66)	Steel Ball	1
24	Hex Cap Bolt	8	12)	Air Cylinder	1	67)	Spring	1
25	Hex Cap Bolt	2	13)	Hex Cap Nut	1	68)	Joint Block	1
26	Brake Pedal	2	14)	Spring Seat	1	69)	Shaft	2
27	Brake Slice	2	15)	Small Piston	1	70)	Bushing	1
28	Protect Cover	2	16)	Big Spring	1	71)	Bushing	1
29	Flat Washer	2	17)	Plug Cover	1	72)	Shaft	1
30	Spring Washer	2	18)	Cylinder Seat	1	73)	Pressure Wheel Seat	1
31	Semicircle Screw	2	19)	Hex Cap Nut	1	74)	Pressure Wheel	1
32	Bushing	2	20)	Bushing	1	75)	Pin	1
33	Handle	1	21)	Oil Seal	1	76)	Shaft	1
34	Big Washer	2	22)	Pump Cylinder	1	77)	Shaft	1
35)	Spring Washer	2	23)	O-ring	1	78)	Foot Pedal Handle	1
36	Hex Cap Bolt	2	24)	Plug	1	79)	Cylinder	1
37	Hex Cap Bolt	2	25)	Taper Spring	1	80)	Safe Valve	1
38	Flat Washer	2	26)	Steel Ball	1	81)	O-ring	1
39	Spring Washer	2	27)	Hex Cap Plug	2	82)	Oil Pipe Tie-in	1
40	Hex Cap Nut	2	28)	O-ring	2	83)	High Pressure Oil Pipe	1
41	Oil Box	1	29)	Fix Shaft	1	84)	C-ring	4
42	Hex Cap Bolt	2	30)	Spring Seat	1	85)	Shaft	1
43	Spring Washer	2	31)	Spring	1	86)	Nut	1
44	Hex Cap Nut	2	32)	Steel Ball	1	87)	Washer	1
45	Oil Pipe	1	33)	Plug	1	88)	Set Block	1
46	Lock Pin	1	34)	Taper Spring	1	89)	Lift Piston	1
47	Air Pipe Tie-in	1	35)	Steel Ball	1	90)	Shaft	1
48	O-ring	2	36)	Oil Pipe Tie-in	2	91)	O-ring	1
49	Plug	1	37)	O-ring	2	92)	Top Nut	1
50	Air Pipe	1	38)	Plug	1	93)	Plug	1
51	Air Block	1	39)	Spring	1	94)	O-ring	1
52	Spring	1	40)	Steel Ball	1	95)	Oil Seal	1
53	Oil Seal	1	41)	C-ring	1	96)	O-ring	1
54	Valve Core	1	42)	O-ring	2	97)	Dust Cover	1
55	O-ring	1	43)	O-ring	1			