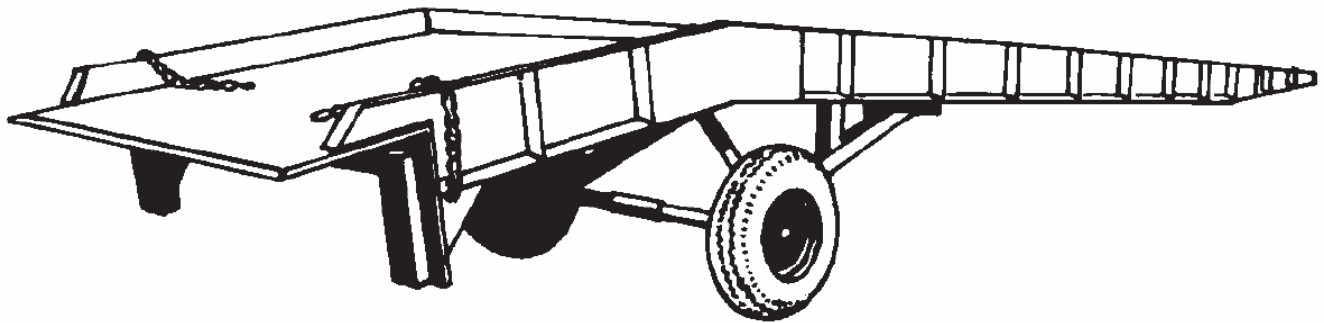




## YR-, SY-, & AY-Series Steel and Aluminum Yard Ramps Instruction Manual



Vestil Manufacturing Corp.

2999 North Wayne Street, P.O. Box 507, Angola, IN 46703

Telephone: (260) 665-7586 -or- Toll Free (800) 348-0868 Fax: (260) 665-1339

Url: [www.vestilmfg.com](http://www.vestilmfg.com) Email: [sales@vestil.com](mailto:sales@vestil.com)

**NOTE:** Compliance with statues, regulations, and codes enforced in the location where the product is *used* is exclusively the responsibility of the end user. Compliance with any “Consensus Standard” published by a non-government organization like ANSI, CSA, or ISO is voluntary unless incorporated into law.

### Table of Contents

|                           |       |
|---------------------------|-------|
| Product Introduction..... | 2     |
| Safety Principles.....    | 3     |
| Use Instructions.....     | 4 - 5 |

### Table of Figures

|                                     |   |
|-------------------------------------|---|
| Fig. 1 Parts diagram.....           | 5 |
| Fig. 2 Label placement diagram..... | 6 |

This manual uses SIGNAL WORDS to classify personal injury risks or situations that might lead to property damage, as well as to draw attention to safety message(s). The reader must understand that each signal word indicates the seriousness of the described hazard.

|  |  |
|--|--|
|  | Identifies a hazardous situation which, if not avoided, <b>WILL</b> result in <b>DEATH</b> or <b>SERIOUS INJURY</b> . Use of this signal word is limited to the most extreme situations. |
|  | Identifies a hazardous situation which, if not avoided, <b>COULD</b> result in <b>DEATH</b> or <b>SERIOUS INJURY</b> .   |
|  | Indicates a hazardous situation which, if not avoided, <b>COULD</b> result in <b>MINOR</b> or <b>MODERATE</b> injury.  |
|  | Identifies practices likely to result in product/property damage, such as operation that might damage the product.   |

## Product Introduction:

Thank you for purchasing a yard ramp from Vestil Manufacturing Corporation. Our ramps are rigorously engineered for durability, quality, and safety. Specifications for each yard ramp variant appear in the following table:

| Model  | Uniform Capacity in Pounds (~kg) | Overall Width in Inches (~cm) | Usable Width in Inches (~cm) | Length in Feet (~m) | Net Weight in Pounds (~kg) |
|--|----------------------------------|-------------------------------|------------------------------|---------------------|----------------------------|
| YR-16-7230                                       | 16,000 (~7,273kg)                | 72 (183cm)                    | 67 (170.2cm)                 | 30 (9.1m)           | 3780 (1718kg)              |
| YR-16-8430                                       | 16,000 (~7,273kg)                | 84 (213.4cm)                  | 78 (198.1cm)                 | 30 (9.1m)           | 4095 (1861.4kg)            |
| YR-16-7236                                       | 16,000 (~7,273kg)                | 72 (183cm)                    | 67 (170.2cm)                 | 36 (11m)            | 4725 (2147.7kg)            |
| YR-16-8436                                       | 16,000 (~7,273kg)                | 84 (213.4cm)                  | 78 (198.1cm)                 | 36 (11m)            | 5040 (2291kg)              |
| YR-20-7230                                       | 20,000 (~9,091kg)                | 73 (185.4cm)                  | 67 (170.2cm)                 | 30 (9.1m)           | 4515 (2052.3kg)            |
| YR-20-8530                                       | 20,000 (~9,091kg)                | 85 (216cm)                    | 78 (198.1cm)                 | 30 (9.1m)           | 4830 (2195.5kg)            |
| YR-20-7336                                       | 20,000 (~9,091kg)                | 73 (185.4cm)                  | 67 (170.2cm)                 | 36 (11m)            | 5565 (2529.5kg)            |
| YR-20-8536                                       | 20,000 (~9,091kg)                | 85 (216cm)                    | 78 (198.1cm)                 | 36 (11m)            | 5985 (2720.5kg)            |
| YR-25-7330                                       | 25,000 (~11,364kg)               | 73 (185.4cm)                  | 67 (170.2cm)                 | 30 (9.1m)           | 4725 (2147.7kg)            |
| YR-25-8530                                       | 25,000 (~11,364kg)               | 85 (216cm)                    | 78 (198.1cm)                 | 30 (9.1m)           | 5040 (2290.9kg)            |
| YR-25-7336                                       | 25,000 (~11,364kg)               | 73 (185.4cm)                  | 67 (170.2cm)                 | 36 (11m)            | 5880 (2672.7kg)            |
| YR-25-8536                                       | 25,000 (~11,364kg)               | 85 (216cm)                    | 78 (198.1cm)                 | 36 (11m)            | 6300 (2863.6kg)            |
| YR-30-7330                                       | 30,000 (~13,636kg)               | 73 (185.4cm)                  | 67 (170.2cm)                 | 30 (9.1m)           | 4935 (2243.2kg)            |
| YR-30-8530                                       | 30,000 (~13,636kg)               | 85 (216cm)                    | 78 (198.1cm)                 | 30 (9.1m)           | 5250 (2386.4kg)            |
| YR-30-7336                                       | 30,000 (~13,636kg)               | 73 (185.4cm)                  | 67 (170.2cm)                 | 36 (11m)            | 6300 (2863.6kg)            |
| YR-30-8536                                       | 30,000 (~13,636kg)               | 85 (216cm)                    | 78 (198.1cm)                 | 36 (11m)            | 6720 (3054.5kg)            |
| YRD-16-7236-H                                    | 16,000 (~7,273kg)                | 72 (183cm)                    | 66 (167.6cm)                 | 36 (11m)            | 5670 (2577.3kg)            |
| YRD-16-8436-H                                    | 16,000 (~7,273kg)                | 84 (213.4cm)                  | 78 (198.1cm)                 | 36 (11m)            | 6090 (2768.2kg)            |
| YRD-20-7336-H                                    | 20,000 (~9,091kg)                | 73 (185.4cm)                  | 66 (167.6cm)                 | 36 (11m)            | 5880 (2672.7kg)            |
| YRD-20-8536-H                                    | 20,000 (~9,091kg)                | 85 (216cm)                    | 78 (198.1cm)                 | 36 (11m)            | 6300 (2863.6kg)            |
| YRD-25-7336-H                                    | 25,000 (~11,364kg)               | 73 (185.4cm)                  | 66 (167.6cm)                 | 36 (11m)            | 6090 (2768.2kg)            |
| YRD-25-8536-H                                    | 25,000 (~11,364kg)               | 85 (216cm)                    | 78 (198.1cm)                 | 36 (11m)            | 6510 (2959.1kg)            |
| YRD-30-7336-H                                    | 30,000 (~13,636kg)               | 73 (185.4cm)                  | 66 (167.6cm)                 | 36 (11m)            | 6300 (2863.6kg)            |
| YRD-30-8536-H                                    | 30,000 (~13,636kg)               | 85 (216cm)                    | 78 (198.1cm)                 | 36 (11m)            | 6720 (3054.5kg)            |
| YRDS-16-7236-M                                   | 16,000 (~7,273kg)                | 72 (183cm)                    | 66 (167.6cm)                 | 36 (11m)            | 5905 (2684.1kg)            |
| YRDS-16-8536-M                                   | 16,000 (~7,273kg)                | 85 (216cm)                    | 78 (198.1cm)                 | 36 (11m)            | 6325 (2875kg)              |
| YRDS-20-8536-M                                   | 20,000 (~9,091kg)                | 85 (216cm)                    | 78 (198.1cm)                 | 36 (11m)            | 6535 (2970.5kg)            |
| YRDS-16-7236-H                                   | 16,000 (~7,273kg)                | 72 (183cm)                    | 66 (167.6cm)                 | 36 (11m)            | 5890 (2677.3kg)            |
| YRDS-16-8536-H                                   | 16,000 (~7,273kg)                | 85 (216cm)                    | 78 (198.1cm)                 | 36 (11m)            | 6310 (2868.2kg)            |
| YRDS-20-8536-H                                   | 20,000 (~9,091kg)                | 85 (216cm)                    | 78 (198.1cm)                 | 36 (11m)            | 6520 (2963.6kg)            |
| <b>Aluminum yard ramps with steel grating</b>    |                                  |                               |                              |                     |                            |
| SY-167230  | 16,000 (~7,273kg)                | 74 (188cm)                    | 66 (167.6cm)                 | 30 (9.1m)           | 3518 (1599.1kg)            |
| SY-168430  | 16,000 (~7,273kg)                | 86 (218.4cm)                  | 78 (198.1cm)                 | 30 (9.1m)           | 4043 (1837.7kg)            |
| SY-169330  | 16,000 (~7,273kg)                | 95 (241.3cm)                  | 87 (221cm)                   | 30 (9.1m)           | 4515 (2052.3kg)            |
| SY-167236-L                                      | 16,000 (~7,273kg)                | 74 (188cm)                    | 66 (167.6cm)                 | 36 (11m)            | 4305 (1956.8kg)            |
| SY-168436-L                                      | 16,000 (~7,273kg)                | 86 (218.4cm)                  | 78 (198.1cm)                 | 36 (11m)            | 4830 (2195.5kg)            |
| SY-169336-L                                      | 16,000 (~7,273kg)                | 95 (241.3cm)                  | 87 (221cm)                   | 36 (11m)            | 5303 (2410.5kg)            |
| SY-207230  | 20,000 (~9,091kg)                | 74 (188cm)                    | 66 (167.6cm)                 | 30 (9.1m)           | 3623 (1646.8kg)            |
| SY-208430  | 20,000 (~9,091kg)                | 86 (218.4cm)                  | 78 (198.1cm)                 | 30 (9.1m)           | 4148 (1885.5kg)            |
| SY-209330  | 20,000 (~9,091kg)                | 95 (241.3cm)                  | 87 (221cm)                   | 30 (9.1m)           | 4620 (2100kg)              |
| SY-207236-L                                      | 20,000 (~9,091kg)                | 74 (188cm)                    | 66 (167.6cm)                 | 36 (11m)            | 4410 (2004.5kg)            |
| SY-208436-L                                      | 20,000 (~9,091kg)                | 86 (218.4cm)                  | 78 (198.1cm)                 | 36 (11m)            | 4935 (2243.2kg)            |
| SY-209336-L                                      | 20,000 (~9,091kg)                | 95 (241.3cm)                  | 87 (221cm)                   | 36 (11m)            | 5408 (2458.2kg)            |
| SY-257230  | 25,000 (~11,364kg)               | 74 (188cm)                    | 66 (167.6cm)                 | 30 (9.1m)           | 3675 (1670.5kg)            |
| SY-258430  | 25,000 (~11,364kg)               | 86 (218.4cm)                  | 78 (198.1cm)                 | 30 (9.1m)           | 4200 (1909.1kg)            |
| SY-259330  | 25,000 (~11,364kg)               | 95 (241.3cm)                  | 87 (221cm)                   | 30 (9.1m)           | 4725 (2147.7kg)            |
| SY-257236-L                                      | 25,000 (~11,364kg)               | 74 (188cm)                    | 66 (167.6cm)                 | 36 (11m)            | 4463 (2028.6kg)            |
| SY-258436-L                                      | 25,000 (~11,364kg)               | 86 (218.4cm)                  | 78 (198.1cm)                 | 36 (11m)            | 4988 (2267.3kg)            |
| SY-259336-L                                      | 25,000 (~11,364kg)               | 95 (241.3cm)                  | 87 (221cm)                   | 36 (11m)            | 5513 (2505.9kg)            |
| SY-307230  | 30,000 (~13,636kg)               | 74 (188cm)                    | 66 (167.6cm)                 | 30 (9.1m)           | 3728 (1694.5kg)            |
| SY-308430  | 30,000 (~13,636kg)               | 86 (218.4cm)                  | 78 (198.1cm)                 | 30 (9.1m)           | 4253 (1933.2kg)            |
| SY-307236-L                                      | 30,000 (~13,636kg)               | 74 (188cm)                    | 66 (167.6cm)                 | 36 (11m)            | 4515 (2052.3kg)            |
| SY-308436-L                                      | 30,000 (~13,636kg)               | 86 (218.4cm)                  | 78 (198.1cm)                 | 36 (11m)            | 5040 (2290.9kg)            |
| <b>Aluminum yard ramps with aluminum grating</b> |                                  |                               |                              |                     |                            |
| AY-167230  | 16,000 (~7,273kg)                | 74 (188cm)                    | 66 (167.6cm)                 | 30 (9.1m)           | 2783 (1265kg)              |
| AY-168430  | 16,000 (~7,273kg)                | 86 (218.4cm)                  | 78 (198.1cm)                 | 30 (9.1m)           | 3150 (1431.8kg)            |
| AY-169330  | 16,000 (~7,273kg)                | 95 (241.3cm)                  | 87 (221cm)                   | 30 (9.1m)           | 3465 (1575kg)              |
| AY-167236-L                                      | 16,000 (~7,273kg)                | 74 (188cm)                    | 66 (167.6cm)                 | 36 (11m)            | 3360 (1527.3kg)            |
| AY-168436-L                                      | 16,000 (~7,273kg)                | 86 (218.4cm)                  | 78 (198.1cm)                 | 36 (11m)            | 3728 (1694.5kg)            |

|             |                    |              |              |           |                 |
|-------------|--------------------|--------------|--------------|-----------|-----------------|
| AY-169336-L | 16,000 (~7,273kg)  | 95 (241.3cm) | 87 (221cm)   | 36 (11m)  | 3990 (1813.6kg) |
| AY-207230   | 20,000 (~9,091kg)  | 74 (188cm)   | 66 (167.6cm) | 30 (9.1m) | 2888 (1312.7kg) |
| AY-208430   | 20,000 (~9,091kg)  | 86 (218.4cm) | 78 (198.1cm) | 30 (9.1m) | 3255 (1479.5kg) |
| AY-209330   | 20,000 (~9,091kg)  | 95 (241.3cm) | 87 (221cm)   | 30 (9.1m) | 3570 (1622.7kg) |
| AY-207236-L | 20,000 (~9,091kg)  | 74 (188cm)   | 66 (167.6cm) | 36 (11m)  | 3465 (1575kg)   |
| AY-208436-L | 20,000 (~9,091kg)  | 86 (218.4cm) | 78 (198.1cm) | 36 (11m)  | 3833 (1742.3kg) |
| AY-209336-L | 20,000 (~9,091kg)  | 95 (241.3cm) | 87 (221cm)   | 36 (11m)  | 4095 (1861.4kg) |
| AY-257230   | 25,000 (~11,364kg) | 74 (188cm)   | 66 (167.6cm) | 30 (9.1m) | 2940 (1336.4kg) |
| AY-258430   | 25,000 (~11,364kg) | 86 (218.4cm) | 78 (198.1cm) | 30 (9.1m) | 3308 (1503.6kg) |
| AY-259330   | 25,000 (~11,364kg) | 95 (241.3cm) | 87 (221cm)   | 30 (9.1m) | 3675 (1670.5kg) |
| AY-257236-L | 25,000 (~11,364kg) | 74 (188cm)   | 66 (167.6cm) | 36 (11m)  | 3578 (1626.4kg) |
| AY-258436-L | 25,000 (~11,364kg) | 86 (218.4cm) | 78 (198.1cm) | 36 (11m)  | 3885 (1765.9kg) |
| AY-259336-L | 25,000 (~11,364kg) | 95 (241.3cm) | 87 (221cm)   | 36 (11m)  | 4200 (1909.1kg) |
| AY-307230   | 30,000 (~13,636kg) | 74 (188cm)   | 66 (167.6cm) | 30 (9.1m) | 3092 (1405.5kg) |
| AY-308430   | 30,000 (~13,636kg) | 86 (218.4cm) | 78 (198.1cm) | 30 (9.1m) | 3360 (1527.3kg) |
| AY-307236-L | 30,000 (~13,636kg) | 74 (188cm)   | 66 (167.6cm) | 36 (11m)  | 3570 (1622.7kg) |
| AY-308436-L | 30,000 (~13,636kg) | 86 (218.4cm) | 78 (198.1cm) | 36 (11m)  | 3938 (1790kg)   |

### Steel yard ramp options

| Model designation | Description  | Net weight in pounds (~kg) |
|-------------------|--|----------------------------|
| YR-HL             | Pneumatic tire and hand pump hydraulic lift (5mph max. tow speed)<br>Not available on YRD models     | 230 (105.5kg)              |
| YR-HL-DC          | Pneumatic tire and 12V DC Hydraulic lift (5mph max. tow speed)<br>Not available on YRD models        | 288 (130.9kg)              |
| YR-FS             | Fork lift pickup slots [7½in. (W) x 2½in. (H) usable on 24in. centers]                               | 460 (209.1kg)              |
| YR-TB             | Fork positioning loop  | 25 (11.4kg)                |
| YR-TB-H           | Tow bar hitch  | 145 (65.9kg)               |
| YR-HDRL           | 42in. (H) handrails with 21in. welded midrail (not removable)  | 12 lb/ft. (17.9kg/m)       |
| YRD-MD            | Mechanical dockleveler in lieu of hydraulic (on 16,000 lb.; 20,000 lb.; & 25,000 lb capacity models) | n/a                        |
| YR-DH             | Openings in lip to lag ramp to top of dock   | n/a                        |

### Aluminum yard ramp options

|           |  |               |
|-----------|--|---------------|
| AYR-HL-DC | 12V DC hydraulic lift (includes on-board charger)              | 50 (22.7kg)   |
| AYR-TB    | Fork positioning loop  | 25 (11.4kg)   |
| AYR-TB-H  | Tow bar fitch  | 145 (65.9kg)  |
| AYR-HDRL  | 42in. high handrails with 21in. welded midrail (not removable) | 230 (105.5kg) |
| AYR-CRB6  | 6in. curb height   |               |
| AYR-YEL   | Yellow safety curbs  |               |
| AY-PNTR   | Pneumatic tire option (service range 40in. – 60in.)            |               |
| AYR-DH    | Openings in lip to lag ramp to top of dock                     |               |

## Safety Guidelines

**Failure to read and understand the instructions included in this manual before using or servicing the yard ramp constitutes misuse and automatically voids the limited warranty.** If questions remain after you finish reading the manual, ask your employer or supervisor for assistance. DO NOT attempt to resolve any problems with the ramp unless you are authorized to do so and certain that it will be safe to use afterwards.



**DANGER** Electrocutation might result if the yard ramp contacts electrified wires. Reduce the likelihood that persons using the ramp or bystanders might be electrocuted by applying **common sense**:

➤ DO not use the crane in an area where it will contact electrified wires;



**WARNING** Material handling is dangerous. Improper or careless operation might result in serious personal injuries sustained by the ramp user(s) and bystanders. Always follow the procedures for loading and unloading trailers applied at your worksite and apply the following:

- Before using the ramp, inspect the usage area for unusual conditions that might require special precautions.
- ALWAYS inspect the ramp before each use. Inspect the ramp and remove it from service if any of the following are noticed:
  - Broken welds, stress cracks, warps or bends, indications of metal fatigue, etc.
  - Severely damaged or deteriorated bumpers;
  - Significant damage to the ramp raising/lowering and dock leveler mechanisms that prevents either mechanism from operating normally.
- DO NOT apply more weight to the ramp than the uniform capacity of your model (see Specifications Table, p. 2-3).

**⚠WARNING** (Continued from p. 3)

- DO NOT crawl beneath or travel under the ramp while the ramp is in use, or allow others to do so.
- Before moving the ramp or Inform all persons in the area that you are going to use the ramp; instruct them to stay clear of the device during use.
- DO NOT allow people to ride on the ramp while moving it.
- DO NOT stand on the ramp while the vehicle to be unloaded is brought into contact with the ramp bumpers. Direct the driver of the vehicle from the side of the ramp, i.e. where you can be seen by the driver at all times.
- ALWAYS verify that there is AT LEAST 4in. (~10cm) of overlap between the front edge of the lip of the ramp (or dock leveler) and the edge of the trailer bed (or sill of the transport vehicle).
- DO NOT attempt to position the ramp by pushing it from the side, unless your ramp is equipped with the YR-FS (fork lift pickup slots) option! Pushing the ramp from the side is likely to damage the wheels and/or the landing gear.
- DO NOT use the ramp if any product label (see p. 6) is unreadable, damaged, or absent.

## Use instructions

### A. YR-series dock levelers with manual height adjustment mechanism

- 1) Position the yard ramp on a level surface; then adjust the height of the elevated end of the yard ramp to be roughly 2in. above the trailer bed by rotating the handle clockwise.
- 2) Slowly back the trailer towards the yard ramp until it contacts the bumpers.
- 3) Turn off the engine and set the parking brake of the tow vehicle.
- 4) Immobilize the trailer with wheel chocks.
- 5) Attach the trailer to the yard ramp with the safety chains.
- 6) Turn the handle counterclockwise to retract the ramp wheels and landing gear. As the wheels retract, the ramp will lower. Continue to turn the handle until the ramp makes solid contact with the bed of the trailer. Continue turning the handle until the ramp wheels are no more than 2-3inches from the ground to allow the ramp to float during trailer loading/unloading operations. As weight is applied to the trailer, it might be necessary to adjust the height of the ramp wheels to maintain 2-3in. clearance between them and the ground.
- 7) When the trailer is loaded/unloaded, turn the handle clockwise until the ramp is raised about 2in. above the trailer, and then disconnect the safety chains.

### B. YR-HL, SY-, and AY-series ramps with manual hydraulic pump and pneumatic tires

- 1) Close the hydraulic release valve, or verify that the release valve is already closed; then work the handle back and forth to adjust the height of the elevated end of the ramp to be at least 2in. above the trailer bed.
- 2) Slowly back the trailer towards the yard ramp until it contacts the bumpers.
- 3) Turn off the engine and set the parking brake of the tow vehicle.
- 4) Immobilize the trailer with wheel chocks.
- 5) Attach the trailer to the yard ramp with the safety chains.
- 6) Slowly open the release valve until the ramp begins to slowly lower towards the lip of the ramp. Leave the valve open after the ramp makes solid contact with the bed of the trailer to allow the ramp to float during trailer loading/unloading operations.
- 7) When the trailer is loaded/unloaded, close the release valve and ratchet the pump handle back-and-forth until the ramp is about 2in. above the bed of the trailer, and then disconnect the safety chains.

### C. YRD-series yard ramp with mechanical dock leveler

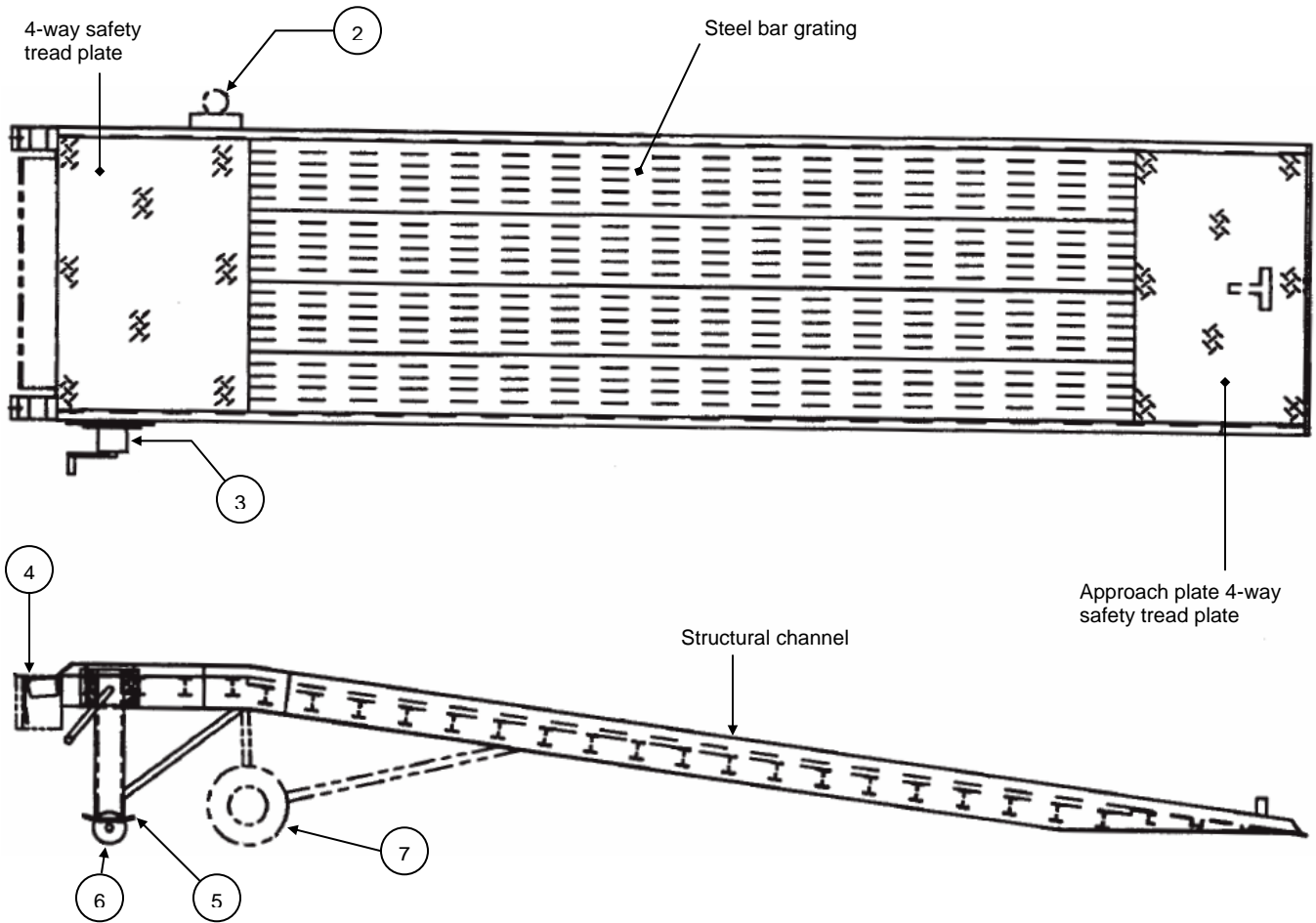
- 1) Position the yard ramp on a level surface; then adjust the height of the elevated end of the yard ramp to be roughly 2in. above the trailer bed by rotating the handle clockwise.
- 2) Slowly back the trailer towards the yard ramp until it contacts the bumpers.
- 3) Turn off the engine and set the parking brake of the tow vehicle.
- 4) Immobilize the trailer with wheel chocks.
- 5) Attach the trailer to the yard ramp with the safety chains.
- 6) Rest the dock leveler on the trailer bed:
  - a) Remove the pipe lever from its storage location (in the bumper box) and insert the end into the socket;
  - b) Face the trailer and pull the lever in one smooth, continuous stroke towards you to raise the dock leveler; then
  - c) Push the lever forward to release the leveler. The leveler plate will fall onto the bed of the trailer as you push the lever forward.
- 7) To return the leveler to its stored/unused configuration, simply drive the trailer away from the dock and let the leveler fall.

### D. YRD-PP-series yard ramp with hydraulic dock leveler

- 1) Position the yard ramp on a level surface; then adjust the height of the elevated end of the yard ramp to be roughly 2in. above the trailer bed by rotating the handle clockwise.

- 2) Slowly back the trailer towards the yard ramp until it contacts the bumpers.
- 3) Turn off the engine and set the parking brake of the tow vehicle.
- 4) Immobilize the trailer with wheel chocks.
- 5) Attach the trailer to the yard ramp with the safety chains.
- 6) Close the fluid return valve on the dock leveler pump by turning it clockwise; then work the pump handle back-and-forth until the dock leveler clears the trailer and fully extends.
- 7) When the trailer is loaded/unloaded, turn the handle clockwise until the ramp is raised about 2in. above the trailer, and then disconnect the safety chains.

**FIG. 1: Parts Diagram**



| Item no. | Engineering part no.     | Description   | Quantity |
|----------|--------------------------|---|----------|
| 1        | YR-TBASMB                | Tow bar assembly  | 1        |
| 2        | YR-HL-PMP<br>YR-HL-SK    | Manual hydraulic pump<br>Seal kit for manual hydraulic pump                                 | 1<br>1   |
| 3        | YR-CRNK<br>YR-HNDL       | Mechanical crank assembly<br>Handle for mechanical crank                                    | 1<br>1   |
| 4        | YR-CYL<br>YR-PPHP        | Hydraulic leveler (YRD-series)<br>Hydraulic cylinder for leveler<br>Manual pump for leveler | 1<br>1   |
|          | YRD-ML-HOOK<br>YRD-ML-TS | Mechanical leveler (YRD-ML-series)<br>Lifting hook<br>Torsion spring                        | 1<br>1   |
|          | TRD-BB<br>YRD-RB         | Standard features (YRD and YRD-ML series)<br>Bumper box<br>Rubber bumper                    | 2<br>2   |
| 5        | YR-PAD                   | Foot plate  | 2        |
| 6        | YR-SS9                   | Steel wheels (9in.)   | 2        |
| 7        | YR-HL-TIREASMB           | Pneumatic tire assembly (series YR-HL)  | 1        |

|                            |                                |        |
|----------------------------|--------------------------------|--------|
| YR-HL_TIRE<br>YR-HL-AXLHUB | Pneumatic tire<br>Axle and hub | 2<br>1 |
|----------------------------|--------------------------------|--------|

**FIG. 2:** Label Placement Diagram

| <b>⚠ WARNING</b>   | <b>⚠ ADVERTENCIA</b>  | <b>⚠ AVERTISSEMENT</b>  |
|--|---|---|
| CHAIN BOTH SIDES OF RAMP TO TRAILER & CHOCK WHEELS   | ENCADENE AMBOS LADOS DE LA RAMPA AL REMOLQUE O CURIAS DE LAS RUEDAS | ATTACHER LES DEUX COTES DE LA RAMPE A LA REMORQUE & AUX CALES DES ROUES |
| Vestil Manufacturing Corporation • Aigo st. 1M-46702 U.S.A. • P.h. (800) 662-7588 • www.vestil.com |   |   |

Both Sides

427

Both Sides



623

Edge-O-Dock Option



See FM or PE/PP for labels

Hand Pump Option



Red Vestil  
003



621

Without Pump  
Option



622

With Pump  
Option



206

# YR/YRD & YRDS



Both Sides

577

Both Sides

CAPACITY / CAPACIDAD / CAPACITÉ  
**16,000 LBS. / 7257 KGS.**

or

616

CAPACITY / CAPACIDAD / CAPACITÉ  
**20,000 LBS. / 9071 KGS.**

or

614

CAPACITY / CAPACIDAD / CAPACITÉ  
**25,000 LBS. / 11339 KGS.**

or

612

CAPACITY / CAPACIDAD / CAPACITÉ  
**30,000 LBS. / 13607 KGS.**

615

# YARD RAMP

Stationary/Portable Steel