

MODEL DCR-110 BARREL CARRIER/ROTATER HAND CART

1. OPERATING INSTRUCTIONS (THE PARTS ARE NAMED IN THE ASSEMBLY PICTURE ON THE OTHER SIDE OF PAPER)

A. RAISE HANDLE, PUSH THE CARRIER AGAINST THE BARREL WITH SADDLE IN CENTER OF BARREL. DRAPE THE CHAIN ACROSS THE BARREL AND DOWN INTO THE GROOVE IN RATCHET. TIGHTEN RATCHET WITH HAND EFFORT ONLY. DO NOT USE A PIPE OR OTHER MEANS TO INCREASE LEVERAGE.

B. PULL DOWN HANDLE TO RAISE BARREL TO DESIRED HEIGHT OFF FLOOR.

C. TO POUR, PULL OUT THE TILT LOCKS AND TILT DRUM TO HORIZONTAL DRAINING POSITION. RE-ENGAGE TILT LOCKS, IF DESIRED. PULL THEM AGAIN BEFORE RETURNING BARREL TO UP-RIGHT POSITION. TILT LOCKS SHOULD BE INWARD TO LOCK BARREL IN VERTICAL POSITION BEFORE TRANSPORTING.

D. TO LOWER BARREL TO THE FLOOR, PUSH DOWN ON THE HANDLE AND GRIP BOTH RELEASE RODS ON HANDLE. HOLD FIRMLY WHILE LOWERING BARREL. TO DISCONNECT THE BARREL FROM CARRIER, DISENGAGE THE PAWL AND RELEASE THE CHAIN FROM THE RATCHET. HANG THE CHAIN ON THE CHAIN PIN.

E. THE BARREL CARRIER WILL RAISE AND HOLD A VERTICAL BARREL AS MUCH AS 11 1/2" ABOVE THE FLOOR. WITH THE BARREL HELD HORIZONTALLY, THERE CAN BE A 18" MAXIMUM FLOOR CLEARANCE. THERE ARE ADJUSTING HOLES LOCATED IN THE HANDLE PLATE AND LINK GUSSET TO COMPENSATE FOR VARYING HOLE NEAREST THE PIVOT STUD.

F. BARREL WEIGHT SHOULD NOT EXCEED 800 LBS. FOR A FULL BARREL, 500 LBS. FOR A HALF-FULL BARREL, FOR EASE OF TIPPING.

2. MAINTENENCE

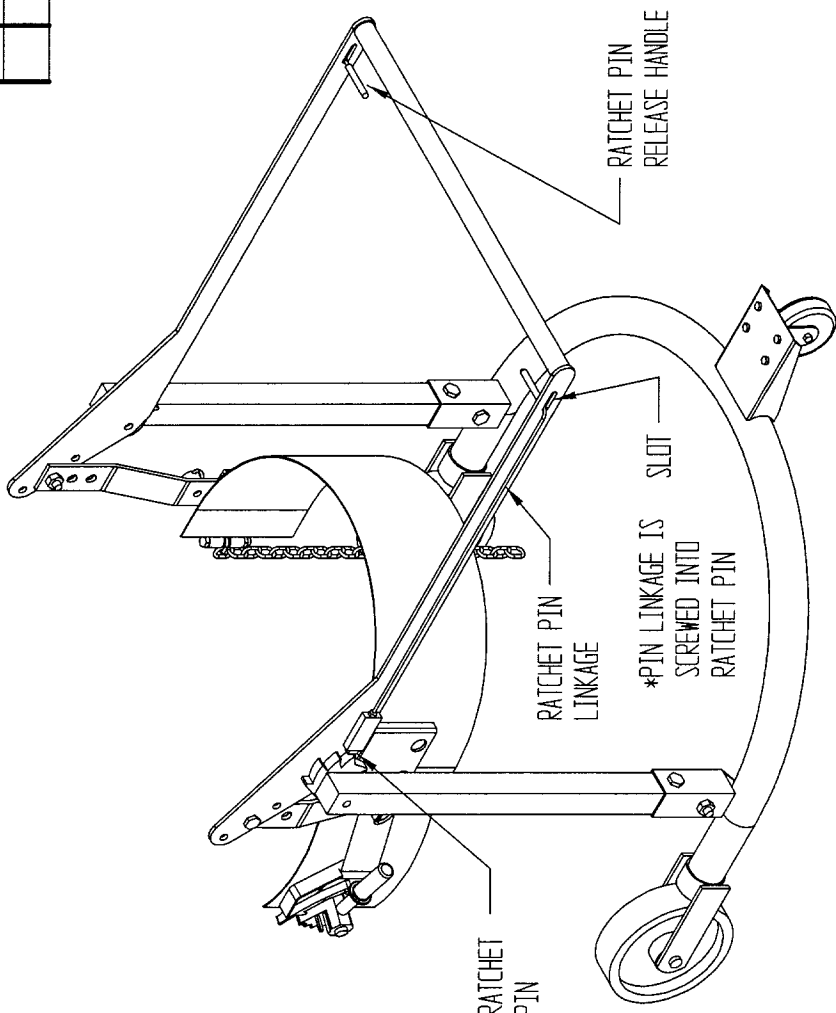
A. OIL RATCHET, PAWL, HINGES AND OTHER MOVING PARTS PERIODICALLY.

B. THE SADDLES SHOULD BE CLEANED OCCASIONALLY TO MAINTAIN GRIPPING ACTION OF THE SURFACE WHICH CONTACTS THE BARREL.

C. TIGHTEN ALL NUTS AND BOLTS PERIODICALLY, EXCEPT THOSE IN STEP 3 WHICH MUST BE LOOSE ENOUGH TO ALLOW LINKS AND SADDLE TO HANG PROPERLY.

REV.	DWG #:	40-126-001	REV.	ECR #	DATE	REVISIONS	INITIAL

- 1) UNSCREW PIN RELEASE HANDLE FROM PIN LINKAGE
- 2) PULL PIN LINKAGE OUT OF SLOT
- 3) UNSCREW PIN LINKAGE FROM RATCHET PIN A FEW TURNS
- 4) REASSEMBLE IN REVERSE ORDER
- 5) CHECK RATCHET PIN ENGAGEMENT
- 6) READJUST IF NECESSARY

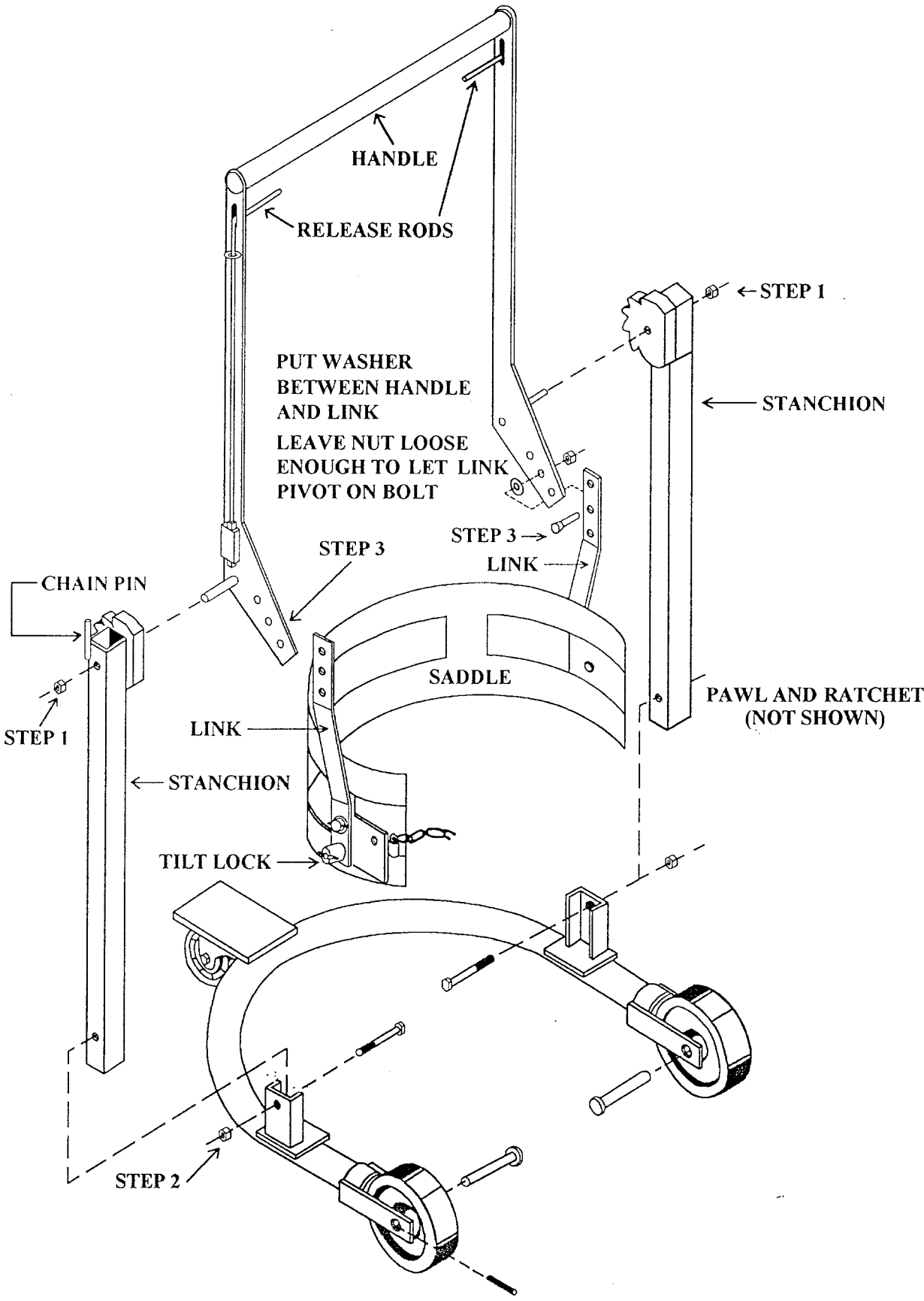


T & S EQUIPMENT COMPANY	
INSTRUCTIONS, DCR-110	
DRAWN BY: S ROSE	SCALE: NTS
MATERIAL:	DATE: 4-12-02
APP'D:	40-126-001

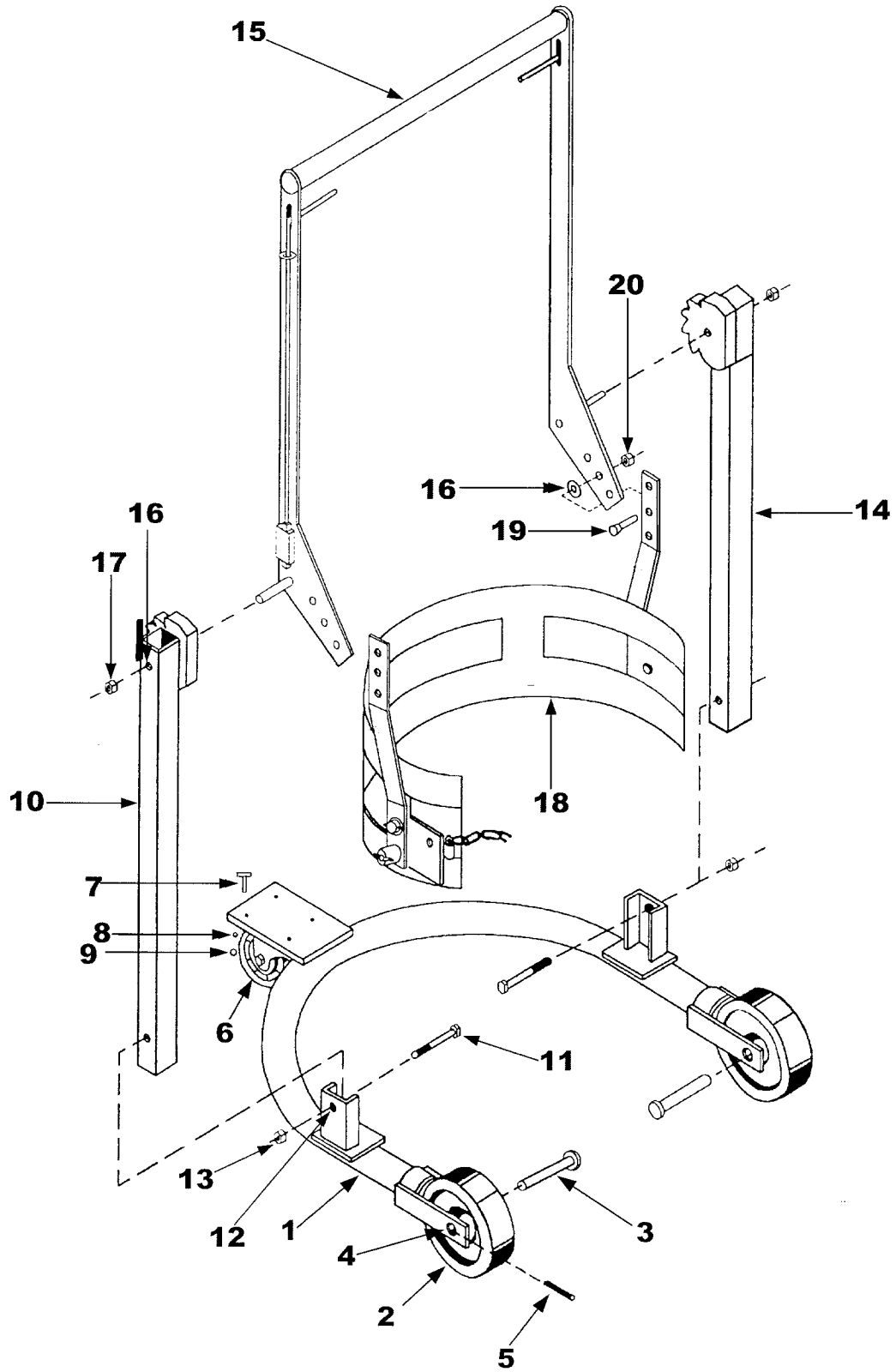
REMOVE ALL BURRS AND SHARP EDGES	
CONCENTRIC	.006 TIR
ANGLES	+/- 0° 30'
DECIMALS	x.xxx +/- .005 x.xx +/- .010 x.x +/- .025
FRACTIONS	+/- 1/32
TOLERANCE	MACHINE WELDMENT

THIS PRINT IS CONFIDENTIAL AND IS THE PROPERTY OF T & S EQUIPMENT CO. THIS PRINT SHALL NOT BE USED, COPIED OR REPRODUCED IN WHOLE OR IN PART. ANY SHALL THE CONTENTS BE REPRODUCED IN ANY MANNER TO WHOMEVER UNLESS WRITTEN PERMISSION IS OBTAINED FROM T & S EQUIPMENT CO.

ASSEMBLY INSTRUCTIONS FOR MODEL DCR-110 BARREL CARRIER
FOLLOW THE NUMBERED STEPS



DCR-110



Mfr. Model Number	Generic Prt. #	Mfr. Component Part Number	Component Description	Reference Number	List Price(\$)
DCR-110		DCR-BA	Base Assembly	1	232.00
DCR-110		16-132-040	Wheel 8 x 2 Poly On Steel	2	32.90
DCR-110		DCR-AXL	Axle	3	5.76
DCR-110		33424	Flat Washer 3/4"	4	1.50
DCR-110		40579	Spring Pin # 5 x 1-1/4	5	1.50
DCR-110		16-132-053	Swivel Caster 5x2 Poly On Steel	6	40.04
DCR-110		11052	Bolt 5/16-18 x 5/8	7	1.50
DCR-110		33006	Washer 5/16	8	1.50
DCR-110		36104	Nut 5/16-18	9	1.50
DCR-110		DCR-RPS	Right Side Pipe Support	10	68.00
DCR-110		11113	Bolt 3/8-16 x 2-1/2	11	1.50
DCR-110		33008	Washer 3/8	12	1.50
DCR-110		36106	Nut 3/8-16	13	1.50
DCR-110		DCR-LPS	Left Side Pipe Support	14	68.00
DCR-110		DCR-HDL	Handle Assembly	15	180.00
DCR-110		33016	Flat Washer 5/8	16	1.50
DCR-110		36113	Nyloc Nut 5/8-11	17	1.50
DCR-110		DCR-CR	Cradle Assembly	18	148.00
DCR-110		16309	Bolt 5/8-18 x 1-1/2	19	1.50
DCR-110		36363	Nyloc Nut 5/8-18	20	1.50