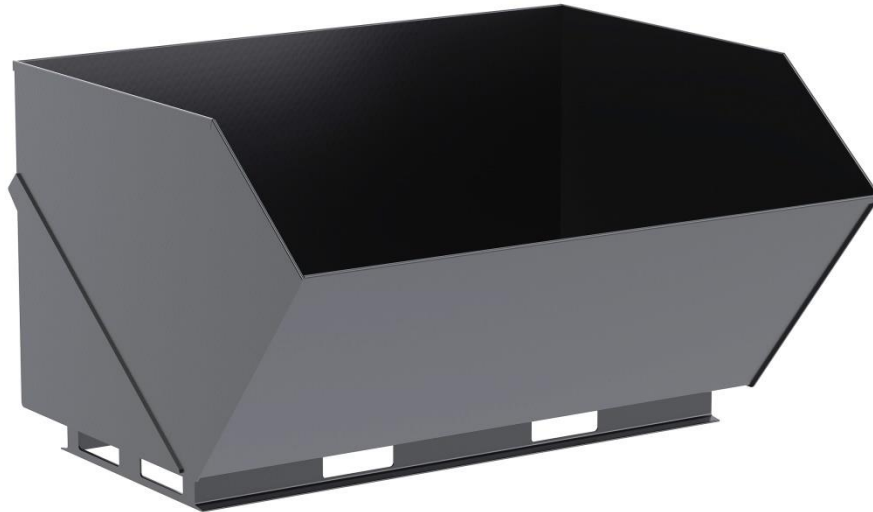




Vestil Manufacturing Company
 2999 North Wayne Street, P.O. Box 507, Angola, IN 46703
 Telephone: (260) 665-7586 -or- Toll Free (800) 348-0868
 Fax: (260) 665-1339
www.vestil.com info@vestil.com

EA-SKHH-200 Skid Steer Hopper Accessory



RECEIVING INSTRUCTIONS

After delivery, remove the packaging from the product. Inspect the product closely to determine whether it sustained damage during transport. If damage is discovered, record a complete description of it on the bill of lading. If the product is undamaged, discard the packaging.

NOTE: The end-user is solely responsible for confirming that product design, use, and maintenance comply with laws, regulations, codes, and mandatory standards applied where the product is used.

TECHNICAL SERVICE & REPLACEMENT PARTS

For answers to questions not addressed in these instructions or to order replacement parts, labels, and accessories, contact our Technical Service and Parts Department at (260) 665-7586. You can also reach the department online at <https://www.vestil.com/page-parts-request.php>.

ELECTRONIC COPIES OF INSTRUCTION MANUALS

Additional copies of this instruction manual can be downloaded from <https://www.vestil.com/page-manuals.php>.

Table of Contents		Page
Signal Words		2
Safety Instructions		2 - 3
Compliance Considerations		3 - 4
Hopper Specifications		5
Mounting the Hopper		6
Using the Hopper		6
Record of Satisfactory Condition		7
Inspecting and Maintaining the Hopper		7, 8, 9
Labeling Diagram		9
Limited Warranty		10

SIGNAL WORDS

This manual uses SIGNAL WORDS to indicate the likelihood of personal injuries, as well as the probable seriousness of those injuries, if the product is misused. Other signal words call attention to uses of the product likely cause property damage. The following signal words might appear in this manual.

⚠ DANGER	Identifies a hazardous situation which, if not avoided, <u>WILL</u> result in DEATH or SERIOUS INJURY. Use of this signal word is limited to the most extreme situations.
⚠ WARNING	Identifies a hazardous situation which, if not avoided, COULD result in DEATH or SERIOUS INJURY.
⚠ CAUTION	Indicates a hazardous situation which, if not avoided, COULD result in MINOR or MODERATE injury.
NOTICE	Identifies practices likely to result in product/property damage, such as operation that might damage the crane.

SAFETY INSTRUCTIONS

Exercise sound judgment when assembling, using, inspecting, and maintaining this hopper. **Keep a copy of this manual with it or the vehicles that will use it at all times, if possible. Otherwise, it should be kept in a location known by, and accessible to, all persons who might use the hopper.**

⚠ WARNING

- Improper or careless use of this product might result in serious personal injuries or death.
- Read & understand this entire manual before using, inspecting or maintaining the hopper.
 - Inspect the hopper before each use. Do not use if damaged or if unusual noise or movement is observed. See [INSPECTING AND MAINTAINING THE HOPPER](#), p. 7-9.
 - Do not use this device unless you are trained and certified to operate the machine to which it is attached (skid steer or lift truck).
 - Inform all persons in the area that you will be using the hopper and instruct them to stay clear of the area during operation.
 - DO NOT exceed the capacity of the hopper (4000 lbs or 1814 kg) or the capacity of the machine (skid steer or lift truck), whichever is less. Ensure that the total weight of the hopper plus any material in the hopper does not exceed the vehicle's capacity as specified in its operator manual for this type of attachment.
 - The weight of the hopper is 575 lb. (261 kg).
 - The weight of a full capacity load is 4,000 lb. (1,818kg).
 - A full capacity load + hopper weight = 4575 lb. (2075 kg).DO NOT use the hopper to transport people or allow anyone to ride on or in the hopper.
 - DO NOT stand or walk under the hopper when it is elevated.
 - DO NOT use the hopper if any label is damaged or unreadable. Contact Vestil's [TECHNICAL SERVICE DEPARTMENT](#) to order replacement labels. Apply all replacement labels before returning the hopper to service.
 - DO NOT modify the product in any way without first obtaining written approval from Vestil. Unapproved modifications automatically void the [LIMITED WARRANTY](#) on p. 10, and might make the product unsafe to use.
 - Ensure the load is evenly distributed in the hopper to maintain stability and prevent tipping.
 - Do not operate the machine with the hopper raised on uneven or sloped ground, as it may cause the machine to tip over.
 - Before dumping (when applicable), ensure the area is clear of personnel and obstacles to prevent injury or damage from falling materials.
- [Safety Instructions continue on the next page]

⚠ WARNING

- Ensure the dumping area is prepared to handle the material to prevent surface damage.
- Additional considerations when using the hopper with a lift truck (forklift):**
- Obtain written approval from the lift truck manufacturer before using the hopper attachment, as required by OSHA rule 1910.178. See [29 CFR 1910.178\(a\)\(4\)](#).
 - Ensure the lift truck is marked to identify the hopper (attachment) and shows the approximate weight of the truck and hopper combination at maximum elevation with load laterally centered, per OSHA rule 1910.178. See [29 CFR 1910.178\(a\)\(5\)](#).
 - Operators must be trained on the proper use of the hopper attachment, as it affects the lift truck's center of gravity and capacity.
 - When mounting the hopper on forks using the fork pockets:
 - Ensure the hopper is balanced, i.e. loaded evenly. Materials in the hopper should be evenly distributed rather than concentrated, for example, on one side.
 - Fully insert the forks into the chosen pockets.
 - Use the appropriate fork pocket configuration (front/back on 24" (61 cm) centers or left/right on 12" (30.5 cm) centers) based on the desired orientation.
 - Use the appropriate fork pocket configuration (front/back on 24" (61.0 cm) centers or left/right on 12" (30.5 cm) centers) based on the desired orientation.
- Additional considerations when using the hopper with a skid steer:**
- Ensure that the total weight of the hopper and the material does not exceed the skid steer's capacity as specified in the skid steer's operator manual for this type of attachment. The total weight is the weight of the hopper (575 lb or 261 kg) plus the weight of the material. For a full capacity load, the total weight would be 4575 lb (2075 kg).
 - Follow the skid steer's operator manual for attachment procedures and safety guidelines.

COMPLIANCE CONSIDERATIONS

This section identifies key US national consensus standards and U.S. federal OSHA regulations applicable to the EA-SKHH-200 Skid Steer Hopper. Users must also comply with all local, state, and regulations that apply where the product is used.

When used with a lift truck (forklift):

1. **OSHA Regulation: [29 CFR 1910.178](#) - Powered Industrial Trucks**
 - **Scope:** Governs the safe operation of powered industrial trucks, including front-end attachments like the hopper, in general industry settings.
 - **Classification:** The EA-SKHH-200, when mounted on lift truck forks via its fork pockets, is classified as a front-end attachment. This affects the lift truck's capacity and center of gravity, requiring specific safety measures.
 - **Key Requirements:**
 - 29 CFR 1910.178(a)(4) mandates written approval from the lift truck manufacturer for attachments affecting capacity or safe operation.
 - 29 CFR 1910.178(a)(5) requires marking the lift truck to identify the attachment and indicate the weight and capacity of the truck-attachment combination.
 - **Access:** Available through the OSHA website currently at <https://www.osha.gov/laws-regs/regulations/standardnumber/1910/1910.178>.
2. **ANSI/ITSDF Standard: B56.1-2020 - Safety Standard for Low Lift and High Lift Trucks**
 - **Scope:** Provides guidelines for the design, operation, and maintenance of powered industrial trucks and their attachments.
 - **Classification:** The hopper is an attachment that must be maintained and inspected per the standard's requirements for safe operation.
 - **Key Requirements:** Includes regular inspection of attachments by trained personnel and adherence to manufacturer guidelines.

- **Access:** Purchase a copy of the latest revision ANSI/ITSDF B56.1 (currently 2020). Numerous online ecommerce sites offer downloadable and printed copied of the standard.

When used with a skid steer vehicle:

- **OSHA Regulation: [29 CFR 1926 Subpart O - Motor Vehicles, Mechanized Equipment, and Marine Operations](#)**
 - **Scope:** Applies to material handling equipment, including skid steers, used in construction settings.
 - **Classification:** The EA-SKHH-200, when mounted on a skid steer via the universal quick-attach system or fork pockets, is classified as an attachment for material handling equipment.
 - **Key Requirements:**
 - [29 CFR 1926.21\(b\)\(2\)](#) requires training to recognize and avoid unsafe conditions.
 - [29 CFR 1926.20\(b\)\(4\)](#) mandates that only trained operators use equipment.
 - **Access:** Available at OSHA Construction Standards.
- **General Industry Settings:** For non-construction use, refer to applicable OSHA general industry standards (e.g., 29 CFR 1910.178) and the skid steer manufacturer's guidelines for attachment use.

Users are strongly encouraged to obtain their own copies of these standards and regulations to ensure full compliance and understanding of safe operating practices. Consult with your safety officer or local regulatory bodies to identify any additional local or state requirements.

Stay updated with the latest versions of these documents, as they may be revised periodically.

HOPPER SPECIFICATIONS

- **Model:** EA-SKHH-200
- **Uniform Capacity:** 4000 lb. (1814 kg)
- **Volume:** 2 cubic yards (1.53 cubic meters)
- **Net Weight:** 575 lb. (261 kg)
- **Finish:** Black liquid paint
- **Steel Thickness:** 8 ga.
- **Attachment Options:**
 - Direct mounting on skid steer carriage via Universal Quick Attach
 - Mounting on forks via fork pockets
- **Fork Pockets:**
 - Located on all four sides of the base for versatile mounting configurations
 - Front and back pockets: 8" x 2.5" (20.3 cm x 6.4 cm) on 24" (61.0 cm) centers
 - Left and right pockets: 8" x 2.5" (20.3 cm x 6.4 cm) on 12" (30.5 cm) centers
- **Dimensions:**
 - Overall Width: 64 11/16 inches (164.6 cm)
 - Usable Width: 64 inches (162.6 cm)
 - Overall Length: 55 1/8 inches (140.0 cm)
 - Overall Height: 38 inches (96.5 cm)

A specifications document that includes information about centers of gravity for your EA-SKHH-200 model hopper is accessible on the product webpage at <https://www.vestil.com/product.php?FID=1736>. Click the "Product Specifications Table" drop-down menu bar partway down the page. Scroll down to the entry for the model you purchased and click the button in the column titled "PDF's" that looks like a pencil inside a box. A PDF file will open. This file is the specifications document. Print a copy of the document and keep it with your copy of this manual. The following is an exemplar specifications document.

SKID STEER HOPPER - EA-SKHH-200

APPROX WEIGHT: 599 lbs.
DOES NOT INCLUDE WEIGHT OF POWER OR PACKAGING!!!

*** ANY ADDITIONS, DELETIONS, OR OMISSIONS MUST BE CORRECTED ON THIS DRAWING AS THIS DRAWING WILL BE CONSIDERED ALL INCLUSIVE ***
ALL GRAPHICS PROVIDED ARE FOR REFERENCE ONLY. IF CERTAIN DIMENSIONS ARE CRITICAL PLEASE VERIFY THOSE DIMENSIONS WITH YOUR SALESPERSON

STANDARD FEATURES

MODEL NUMBER IS EA-SKHH-200
OVERALL WIDTH IS 64 11/16"
USABLE WIDTH IS 64"
OVERALL LENGTH IS 55 1/8"
OVERALL HEIGHT IS 38"
VOLUME IS 2 CU. YRD.
MAX CAPACITY IS 4,000 LBS.
UNIVERSAL MOUNTING PLATE
8" X 2 1/2" USABLE FORK POCKETS
ON BACK AND BOTH SIDES
FOR TRANSPORTATION ONLY
DURABLE BAKED IN POWDER COAT BLACK FINISH
APPROX. WEIGHT / LOST LOAD = 599
MINIMUM EFFECTIVE THICKNESS = LESS THAN 1"
VERTICAL CENTER OF GRAVITY = 14 7/8"
HORIZONTAL LENGTH-WISE CENTER OF GRAVITY = 32 13/32"
HORIZONTAL WIDTH-WISE CENTER OF GRAVITY = 19 5/8"

**NEVER EXCEED LOAD CENTER
RATING PER FORKTRUCK
MANUFACTURERS GUIDELINES.
DO NOT USE THIS FORK TRUCK
ATTACHMENT IF LOAD WILL EXCEED
FORK TRUCK MANUFACTURER'S
LOAD CENTER RATING**

SPECIAL FEATURES

NONE

DIMENSION TOLERANCE ± 1/4"

APPROVAL

I, THE UNDERSIGNED, AGREE THAT THE PRODUCT AS REPRESENTED SATISFIES DESIGN AND DIMENSION REQUIREMENTS. I ALSO ACKNOWLEDGE MY DUTY TO CONFIRM PRODUCT AND INSTALLATION COMPLIANCE WITH ALL APPLICABLE FEDERAL, STATE AND LOCAL REGULATIONS AND STANDARDS.

UNITS REQUIRING APPROVAL DRAWINGS OR MODIFIED ARE NON-RETURNABLE

As drawn As marked

Signed: _____ Date: _____

Printed Name: _____

LEAD TIME WILL START UPON RECEIPT OF SIGNED APPROVAL DRAWING

DISTRIBUTOR'S NAME: VESTIL MANUFACTURING		P.O.# X
DRAWN BY: JWW	DATE: 01/17/2022	W.O.# X
REFERENCE: X	SCALE: 1:24	SALES: X
QUOTED LEAD TIME: X	QUOTE # X	FILE NAME: 37-007-181

MOUNTING THE HOPPER

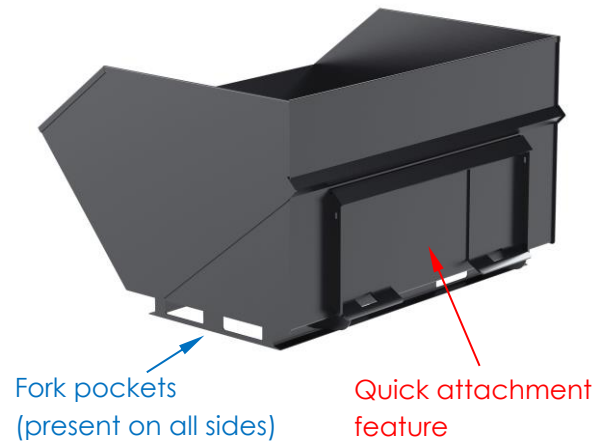
The hopper can be mounted in two ways:

1. Direct Mounting on Skid Steer Carriage:

- Use the universal quick attach system to attach the hopper directly to the skid steer's carriage.
- Refer to your skid steer's operator manual for specific attachment procedures.
- After attachment, verify that the hopper is securely locked in place by attempting to lift it slightly and checking for any movement. If necessary, repeat the mounting procedure until the hopper is securely attached to the carriage.

2. Mounting on Forks Using Fork Pockets:

- The hopper can also be mounted on the forks of a lift truck. Before mounting the hopper, review and apply all [SAFETY INSTRUCTIONS](#) on p. 2-3 relevant to use with a lift truck. Confirm that the lift truck manufacturer has approved use of the hopper with your truck and that the truck bears proper, updated labels/markings.
- Before mounting the hopper on forks, make sure that all materials in the hopper are evenly distributed (not concentrated in one area). Materials also should be entirely contained within the hopper.
- Select the appropriate set of fork pockets for your intended use:
 - Front and back pockets: 24" (61.0 cm) centers
 - Left and right pockets: 12" (30.5 cm) centers
- Fully insert the forks into the chosen pockets. Confirm that the hopper is balanced and stable on the forks.



USING THE HOPPER

Loading the Hopper

1. Lower the hopper to the ground. Set it down on a solid, stable surface for loading. The supporting surface must be able to support *at least* the combined weights of the lift truck and operator, the hopper, and a full capacity load.
2. Do not overload the hopper beyond its capacity (4000 lb. or 1814 kg).
3. Distribute the load evenly to maintain stability.

Transporting the Hopper

1. When mounted directly on the skid steer or on the forks of a lift truck:

- Tip the carriage or forks back slightly, i.e. slightly elevate the far edge of the hopper.
- Keep the hopper as low as possible while transporting it to maintain stability.
- Avoid sharp turns and sudden stops. Brake gradually. Turn slowly and carefully.
- Be aware of the increased width and length when maneuvering.

Dumping

1. When mounted directly on the skid steer:

- Be certain that the dumping area is clear of people and items that could be damaged when the contents of the hopper are dumped.
- Slowly tilt the hopper forward using the skid steer's controls to dump the contents.
- Ensure all material is discharged before returning the hopper to its upright position.
- Do not jerk or rapidly tilt the hopper, as this could cause a loss of stability and/or damage.

2. When mounted on the forks of a lift truck:

- The hopper cannot be dumped using the lift truck's controls. It must be manually emptied or transported to a location where it can be dumped by a skid steer vehicle.

RECORD OF SATISFACTORY CONDITION

After removing the hopper from its crate/package and before using it for the first time, make a complete record of its condition. Photograph and/or make video recordings that clearly capture the structure, welds, quick-connect mounting interface, fork pockets, and all labels applied to the hopper. Be sure to include images of the inside of the hopper, particularly at corners. Supplement the recordings with written descriptions of all fork pockets. Measure each fork pocket and record its dimensions. Collect all photos, videos, and writings. This collection is a record of the hopper in satisfactory condition (the "Record"). The record serves as a baseline for future inspections to determine if the hopper remains in satisfactory condition. Do not use the hopper unless it is in satisfactory condition.

INSPECTING AND MAINTAINING THE HOPPER

Inspections and maintenance (including repairs) should only be performed by qualified persons. Compare the results of each inspection to the [RECORD OF SATISFACTORY CONDITION](#). Do not continue to use the hopper unless all parts are in satisfactory condition. Replace parts that are not in satisfactory condition before returning the unit to regular service. Never make temporary repairs of damaged or missing parts. Only use manufacturer-approved replacement parts to restore the unit to satisfactory condition. If you have any questions about the condition of your hopper, contact the [TECHNICAL SERVICE](#) department at (260) 665-7586.

I. INSPECTIONS

A. Daily Inspections (Before Each Use):

1. Visual Check:

- Examine the hopper's exterior for damage, such as dents, cracks, punctures, significant rusting or corrosion, or bends in the frame, walls, or base.
- Closely inspect the universal quick attach mounting features for deformations, cracks, or other damage.
- Check all fork pockets (front/back on 24" or 61.0 cm centers, left/right on 12" or 30.5 cm centers) for damage, such as bends, cracks, or obstructions.
- Ensure no debris or material is lodged in the quick attachment components or fork pockets.

2. Label Verification:

- Confirm that all labels (capacity, warnings, identification) are legible and securely attached.
- Replace any damaged or unreadable labels by contacting Vestil's Technical Service Dept. at (260) 665-7586 or by submitting a request for parts online at <https://www.vestil.com/page-parts-request.php>.

3. Operational Check:

- When mounting on a skid steer or lift truck, ensure the hopper attaches securely without unusual noise or movement.
- Report any issues to a supervisor and remove the hopper from service for a qualified person to perform a full Monthly Inspection.

B. Monthly Inspections:

1. Structural Integrity:

- Closely inspect all welds (e.g., at frame joints, quick attachment features, fork pockets) for cracks, separation, or rusting/corrosion.
- Check the frame for signs of metal fatigue, such as hairline cracks or thinning, especially in high-stress areas (e.g., near fork pockets).

- Measure fork pocket dimensions (8" x 2.5" or 20.3 cm x 6.4 cm) to ensure they have not deformed.
 - 2. **Surface Condition:**
 - Check for rust, corrosion, or paint damage on the hopper's surface.
 - Assess the severity of any rust; superficial rust can be treated, but severe corrosion affecting structural integrity requires professional evaluation. Remove superficial rust and cover the affected area with touchup paint. See *MAINTENANCE* section below.
 - 3. **Comparison to Record:**
 - Compare findings to the [RECORD OF SATISFACTORY CONDITION](#) identify changes.
 - Document any changes in condition in writing and with photographs/videos. Retain these new records in a dedicated Maintenance Log.
- C. **Post-Impact Inspections:**
1. Immediately inspect the hopper after any incident, such as a collision, drop, or overload, regardless of visible damage.
 2. **Procedure:**
 - Follow the Monthly Inspection steps, with additional focus on:
 - Areas of impact for dents, cracks, or deformation
 - Welds near the impact site for separation
 - Quick attachment features and fork pockets for alignment issues
 - Test the hopper's ability to be properly and securely attached to the skid steer or lift truck.
 3. **Action:**
 - Remove the hopper from service until a qualified person confirms it is safe.
 - Contact Vestil's Technical Service for guidance on repairs or replacements.

Note: Inspections should be performed by personnel trained in accordance with [OSHA General Industry rule 1910.178](#) (see 29 CFR 1910.178(l)) for lift trucks or [OSHA Construction rule 1926.21](#) (see 29 CFR 1926.21(b)(2)) for skid steers. Record all inspection findings, including dates, observations, and actions taken, in your dedicated Maintenance Log.

II. MAINTENANCE

Regular maintenance ensures the EA-SKHH-200 remains in satisfactory condition, prolonging its service life and ensuring safety. Only qualified, trained personnel should perform maintenance tasks. Use only Vestil-approved replacement parts, available through Vestil's Technical Service at (260) 665-7586 or Vestil Parts Request.

1. **Cleaning the Hopper:**
 - Clean the hopper after each use or as needed to remove debris, dirt, or material residue.
 - Use a pressure washer, hose, or brush to clean the interior and exterior, ensuring no debris remains in fork pockets or on the mounting plate.
 - Avoid harsh chemicals that might damage the paint finish.
 - Dry the hopper thoroughly to prevent rust, especially in humid environments.
2. **Rust and Corrosion Prevention:**
 - Inspect the hopper's surface for paint damage or rust during monthly inspections.
 - For superficial rust:
 - Remove using a wire brush or steel wool.
 - Clean the area with a degreaser and dry thoroughly.
 - Apply touch-up paint matching the original black liquid paint finish. Contact Vestil's [TECHNICAL SERVICE DEPT.](#) for compatible paint.
 - For severe rust or corrosion affecting structural integrity:
 - Remove the hopper from service.
 - Contact [TECHNICAL SERVICE](#) for evaluation and repair options.
3. **Repair or Replace Damaged Components:**

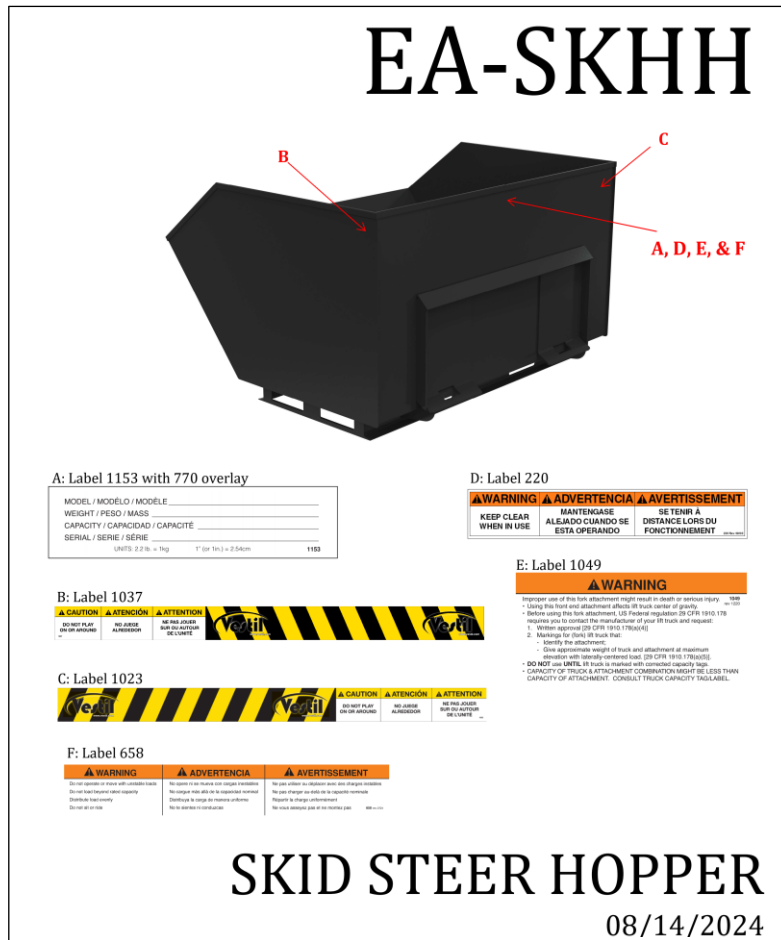
- o Do not use temporary repairs (e.g., duct tape, welding without approval) for damaged components.
 - o For damaged parts (e.g., cracked welds, deformed fork pockets, bent quick attachment features):
 - Order replacement parts from the [TECHNICAL SERVICE DEPT.](#)
 - Follow Vestil's repair instructions or consult a qualified technician.
 - o Replace unreadable or missing labels immediately to ensure safety information is visible.
4. **Storing the Hopper:**
- o When not in use, store the hopper in a dry, covered area to protect against weather exposure.
 - o Place the hopper on a stable, level surface to prevent tipping or deformation.
 - o Ensure fork pockets are clear of debris before storage.

Note: Document all maintenance activities, including cleaning, repairs, and part replacements, in your dedicated Maintenance Log. Retain this log with the Record of Satisfactory Condition for reference during inspections.

LABELING DIAGRAM

Each cargo bar is labeled as shown in the diagram. However, Vestil continually evaluates the adequacy of the content of its labels. Consequently, label content and location are subject to change and your product might not be labeled exactly as shown. Compare the diagram below to your [RECORD OF SATISFACTORY CONDITION](#). If there are any differences between actual labeling and this diagram, contact [TECHNICAL SERVICE](#).

Replace labels that are damaged, missing, or not easily readable (e.g. faded). To order replacement labels or to inquire whether your unit is properly labeled, contact the technical service and parts department online at <https://www.vestil.com/page-parts-request.php> or by calling (260) 665-7586 and asking for the [Parts Department](#).





LIMITED WARRANTY

Vestil Manufacturing Company ("Vestil") warrants HM-B series trailer dollies to be free of defects in material and workmanship during the warranty period. Our warranty obligation is to provide a replacement for a defective, original part covered by the warranty after we receive a proper request from the Warrantee (you) for warranty service.

Who may request service?

Only a warrantee may request service. You are a warrantee if you purchased the product from Vestil or from an authorized distributor AND Vestil has been fully paid.

Definition of "original part"?

An original part is a part used to make the product as shipped to the Warrantee.

What is a "proper request"?

A request for warranty service is proper if Vestil receives: 1) a photocopy of the Customer Invoice that displays the shipping date; AND 2) a written request for warranty service including your name and phone number. Send requests by one of the following methods:

<u>US Mail</u>	<u>Fax</u>	<u>Email</u>
Vestil Manufacturing Company	(260) 665-1339	info@vestil.com
2999 North Wayne Street, PO Box 507	<u>Phone</u>	Enter "Warranty service request" in subject field.
Angola, IN 46703	(260) 665-7586	

In the written request, list the parts believed to be defective and include the address where replacements should be delivered. After Vestil receives your request for warranty service, an authorized representative will contact you to determine whether your claim is covered by the warranty. Before providing warranty service, Vestil will require you to send the entire product, or just the defective part (or parts), to its facility in Angola, IN.

What is covered under the warranty?

The warranty covers defects in the following original, dynamic parts: motors, hydraulic pumps, motor controllers, and cylinders. It also covers defects in original parts that wear under normal usage conditions ("wearing parts"), such as bearings, hoses, wheels, seals, brushes, and batteries.

How long is the warranty period?

The warranty period for original dynamic components is 90 days. For wearing parts, the warranty period is 90 days. Both warranty periods begin on the date Vestil ships the product to the Warrantee. If the product was purchased from an authorized distributor, the periods begin when the distributor ships the product. Vestil may, at its sole discretion, extend a warranty period for products shipped from authorized distributors by up to 30 days to account for shipping time.

If a defective part is covered by the warranty, what will Vestil do to correct the problem?

Vestil will provide an appropriate replacement for any covered part. An authorized representative of Vestil will contact you to discuss your claim.

What is not covered by the warranty?

The Warrantee (you) are responsible for paying labor costs and freight costs to return the product to Vestil for warranty service.

Events that automatically void this Limited Warranty.

- Misuse;
- Negligent assembly, installation, operation or repair;
- Installation/use in corrosive environments;
- Inadequate or improper maintenance;
- Damage sustained during shipping;
- Collisions or other accidents that damage the product;
- Unauthorized modifications: Do not modify the product IN ANY WAY without first receiving written authorization from Vestil.

Do any other warranties apply to the product?

Vestil Manufacturing Co. makes no other express warranties. All implied warranties are disclaimed to the extent allowed by law. Any implied warranty not disclaimed is limited in scope to the terms of this Limited Warranty. Vestil makes no warranty or representation that this product complies with any state or local design, performance, or safety code or standard. Noncompliance with any such code or standard is not a defect in material or workmanship.