

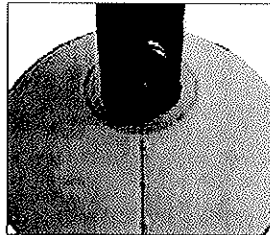
MAINTENANCE-FREE LIGHT POLE BASE COVER

MATERIAL PROPERTIES

- Manufactured from 100% Polypropylene. 100% recyclable.
- Excellent resistance to organic solvents, degreasing agents, acids, alkali, organic solvents, and is stain resistant.
- Impact resistant
- Easily cleaned with environmentally friendly cleaners.
- Ultraviolet additive maintains color intensity and high visibility.
- Foam inserts give progressive resistance, offering soft protection for slight bumps, and more resistance when needed to absorb harder collisions.

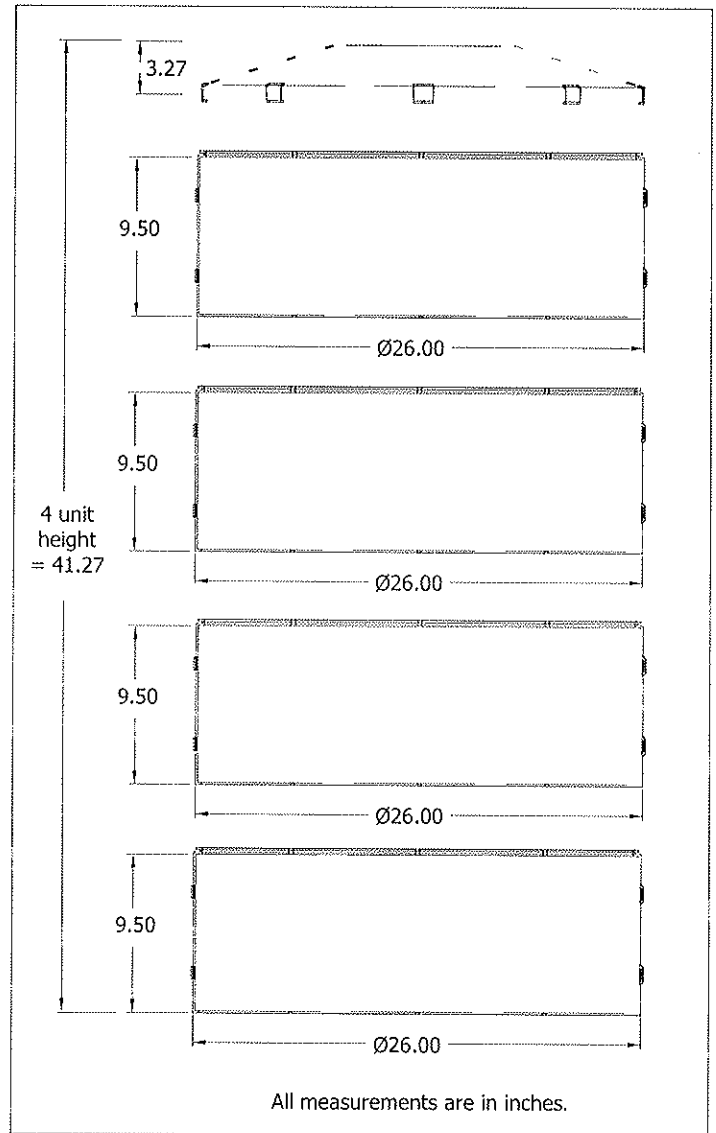
ORDERING INSTRUCTIONS

1. Verify if Poletector can fit diameter of light pole base.
Poletector can cover round bases up to 24" and square bases up to 18" x 18".
2. Determine if you need a shorter, or taller unit. Standard unit is 4-rings high, 41.27".
3. Specify square or round pole. We will custom cut top opening to your specification. Cut out will be .125" larger than the size of the light pole.*
4. Choose color: Safety Yellow, Safety Blue, Imperial Blue, Red, Gray, Green, Safety Orange, Architectural Brown.



*Contractor is responsible for providing accurate dimensions .

Poletector height equals top (3.27") plus each ring height (9.50").
Show below is 4-ring unit height of 41.27".



INSTALLATION INSTRUCTIONS

INSTALLS IN MINUTES
WITHOUT THE USE OF TOOLS

DIMENSIONS

Height:	41.27" (4-ring unit)
Outside diameter:	26"
Inside diameter:	25.5"
Wall thickness:	0.25" approx.
Weight:	25 lbs. (4-ring unit)

CALL TO ORDER SHORTER OR TALLER UNITS