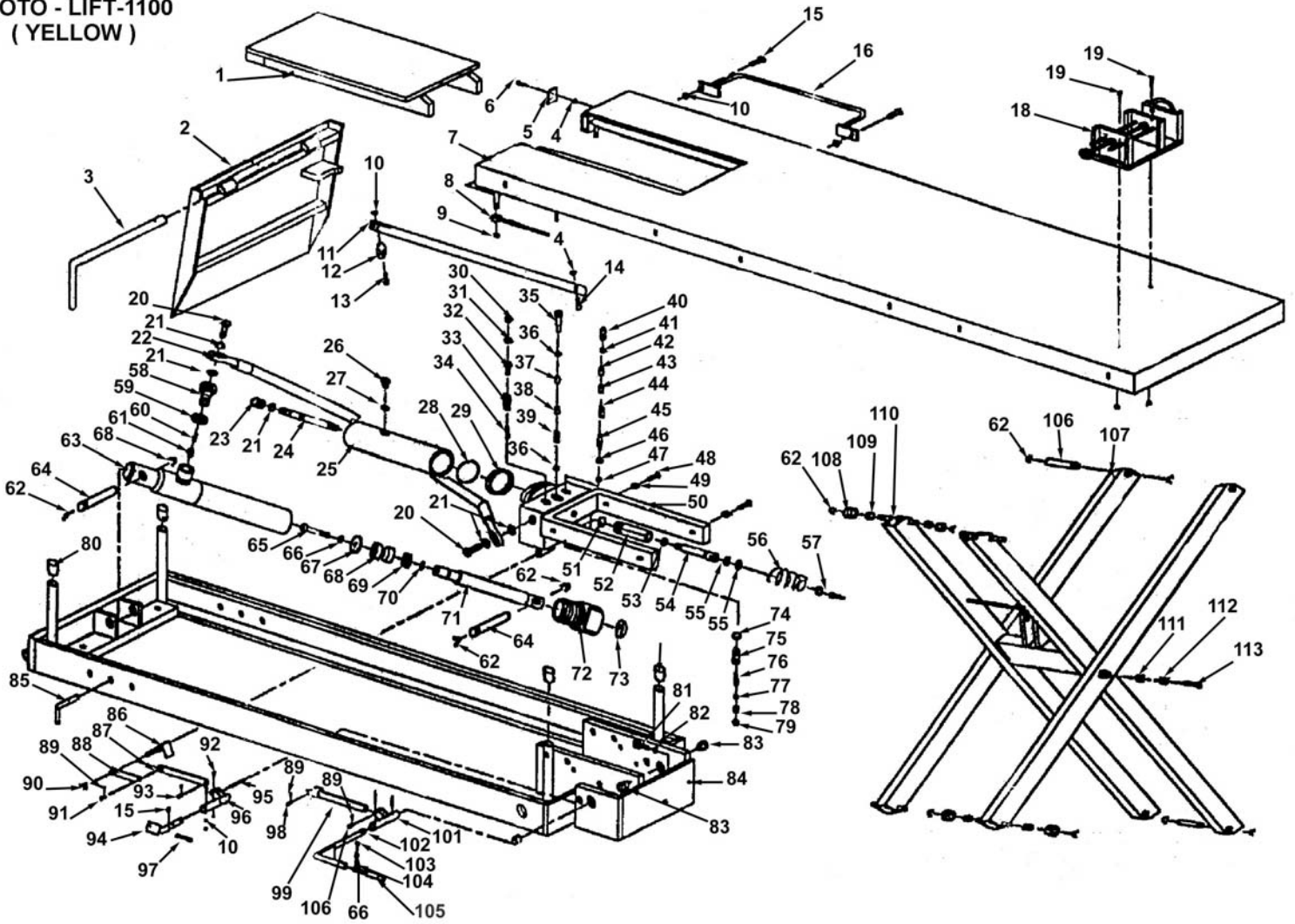


MOTO - LIFT-1100  
(YELLOW)



Ref. #	Model #	Generic Part #	Eng. Part #	Description
1	MOTO-LIFT-1100		ML-1100-1	Cover Board
2	MOTO-LIFT-1100		ML-1100-2	Guide Plate
3	MOTO-LIFT-1100		ML-1100-3	Pin Axle
4	MOTO-LIFT-1100		ML-1100-4	Lock Nut M8
5	MOTO-LIFT-1100		ML-1100-5	Baffle
6	MOTO-LIFT-1100		ML-1100-6	Hex Screw M8 x 40
7	MOTO-LIFT-1100		ML-1100-7	Table
8	MOTO-LIFT-1100		ML-1100-8	Support Rod
9	MOTO-LIFT-1100		ML-1100-9	Lock Nut M18
10	MOTO-LIFT-1100		ML-1100-10	Lock Nut M6
11	MOTO-LIFT-1100		ML-1100-11	Safety Frame
12	MOTO-LIFT-1100		ML-1100-12	Hex Socket Set Screw M16 x 18
13	MOTO-LIFT-1100		ML-1100-13	Nut M8
14	MOTO-LIFT-1100		ML-1100-14	Fixture
15	MOTO-LIFT-1100		ML-1100-15	Hex Screw M8 x 25
16	MOTO-LIFT-1100		ML-1100-16	Hex Screw M12 x 50
17	MOTO-LIFT-1100		ML-1100-17	Washer 12
18	MOTO-LIFT-1100		ML-1100-18	Lock Nut M12
19	MOTO-LIFT-1100		ML-1100-19	Front Support
20	MOTO-LIFT-1100		ML-1100-20	Hex Screw M12 x 20
21	MOTO-LIFT-1100		ML-1100-21	Washer 12
22	MOTO-LIFT-1100		ML-1100-22	Hex Socket Screw M18 x 6
23	MOTO-LIFT-1100		ML-1100-23	Link Tube
24	MOTO-LIFT-1100		ML-1100-24	Pin Axle
25	MOTO-LIFT-1100		ML-1100-25	Retaining Ring 12
26	MOTO-LIFT-1100		ML-1100-26	Pin Axle
27	MOTO-LIFT-1100		ML-1100-27	Split Pin 3.2 x 18
28	MOTO-LIFT-1100		ML-1100-28	Link Tube
29	MOTO-LIFT-1100		ML-1100-29	Link For Discharge
30	MOTO-LIFT-1100		ML-1100-30	Discharge Lever
31	MOTO-LIFT-1100		ML-1100-31	Safety Rod
32	MOTO-LIFT-1100		ML-1100-32	Pedal For Discharge
33	MOTO-LIFT-1100		ML-1100-33	Spring
34	MOTO-LIFT-1100		ML-1100-34	Pin Axle
35	MOTO-LIFT-1100		ML-1100-35	Hex Socket Screw M6 x 35
36	MOTO-LIFT-1100		ML-1100-36	Tube For Discharge
37	MOTO-LIFT-1100		ML-1100-37	Spring Pin 6 x 30
38	MOTO-LIFT-1100		ML-1100-38	Pin Axle
39	MOTO-LIFT-1100		ML-1100-39	Link For Lift Up
40	MOTO-LIFT-1100		ML-1100-40	Link Tube
41	MOTO-LIFT-1100		ML-1100-41	Pedal Holder
42	MOTO-LIFT-1100		ML-1100-42	Washer 8
43	MOTO-LIFT-1100		ML-1100-43	Spring Washer 8
44	MOTO-LIFT-1100		ML-1100-44	Hex Screw M8 x 16
45	MOTO-LIFT-1100		ML-1100-45	Pin Axle
46	MOTO-LIFT-1100		ML-1100-46	Tube For Lift Up
47	MOTO-LIFT-1100		ML-1100-47	Nylon Bush
48	MOTO-LIFT-1100		ML-1100-48	Chassis
49	MOTO-LIFT-1100		ML-1100-49	Bolt
50	MOTO-LIFT-1100		ML-1100-50	Nut M12
51	MOTO-LIFT-1100		ML-1100-51	Hex Screw M12 x 25
52	MOTO-LIFT-1100		ML-1100-52	Link Board
53	MOTO-LIFT-1100		ML-1100-53	Pin Axle For Pump Body
54	MOTO-LIFT-1100		ML-1100-54	Hex Screw M12 x 65

55	MOTO-LIFT-1100		ML-1100-55	Rear Support
56	MOTO-LIFT-1100		ML-1100-56	Seal Cover 35 x 43.5 x 5
57	MOTO-LIFT-1100		ML-1100-57	O-Ring 35.5 x 3.55
58	MOTO-LIFT-1100		ML-1100-58	Cylinder Cover
59	MOTO-LIFT-1100		ML-1100-59	Bushing
60	MOTO-LIFT-1100		ML-1100-60	O-Ring 75 x 3.55
61	MOTO-LIFT-1100		ML-1100-61	Piston Rod
62	MOTO-LIFT-1100		ML-1100-62	C-Ring 20 x 2.4
63	MOTO-LIFT-1100		ML-1100-63	Guideing 2 x 15
64	MOTO-LIFT-1100		ML-1100-64	Piston
65	MOTO-LIFT-1100		ML-1100-65	Seal Ring
66	MOTO-LIFT-1100		ML-1100-66	Washer
67	MOTO-LIFT-1100		ML-1100-67	Retaining Ring 18
68	MOTO-LIFT-1100		ML-1100-68	Cylinder
69	MOTO-LIFT-1100		ML-1100-69	Washer
70	MOTO-LIFT-1100		ML-1100-70	Plug-In Sheet
71	MOTO-LIFT-1100		ML-1100-71	C-Ring 10 x 2.65
72	MOTO-LIFT-1100		ML-1100-72	Cyl Basin
73	MOTO-LIFT-1100		ML-1100-73	C-Ring 75 x 2.65
74	MOTO-LIFT-1100		ML-1100-74	Washer
75	MOTO-LIFT-1100		ML-1100-75	Pump Body
76	MOTO-LIFT-1100		ML-1100-76	Plug
77	MOTO-LIFT-1100		ML-1100-77	O-Ring 7.1 x 1.8
78	MOTO-LIFT-1100		ML-1100-78	Regulating Pressure Nut
79	MOTO-LIFT-1100		ML-1100-79	Regulating Pressure Spring
80	MOTO-LIFT-1100		ML-1100-80	Spring Seat Assembly
81	MOTO-LIFT-1100		ML-1100-81	Regulating Speed Valve Casing
82	MOTO-LIFT-1100		ML-1100-82	O-Ring 15 x 2.65
83	MOTO-LIFT-1100		ML-1100-83	Regulating Speed Spring Seat
84	MOTO-LIFT-1100		ML-1100-84	Regulating Speed Slide Valve
85	MOTO-LIFT-1100		ML-1100-85	Regulating Speed Spring
86	MOTO-LIFT-1100		ML-1100-86	Check Valve Screw
87	MOTO-LIFT-1100		ML-1100-87	O-Ring 10 x 1.8
88	MOTO-LIFT-1100		ML-1100-88	Rod
89	MOTO-LIFT-1100		ML-1100-89	Check Valve Casing
90	MOTO-LIFT-1100		ML-1100-90	Spring
91	MOTO-LIFT-1100		ML-1100-91	Conical Valve
92	MOTO-LIFT-1100		ML-1100-92	O-Ring 6.9 x 1.8
93	MOTO-LIFT-1100		ML-1100-93	Steel Ball 7mm
94	MOTO-LIFT-1100		ML-1100-94	O-Ring 28 x 3.1
95	MOTO-LIFT-1100		ML-1100-95	Pump Body For Plunger
96	MOTO-LIFT-1100		ML-1100-96	Y-Ring 14 x 8 x 6
97	MOTO-LIFT-1100		ML-1100-97	Pump Plunger
98	MOTO-LIFT-1100		ML-1100-98	O-Ring 18 x 2.4
99	MOTO-LIFT-1100		ML-1100-99	Spring
100	MOTO-LIFT-1100		ML-1100-100	Washer
101	MOTO-LIFT-1100		ML-1100-101	O-Ring 10.6 x 2.65
102	MOTO-LIFT-1100		ML-1100-102	Spring
103	MOTO-LIFT-1100		ML-1100-103	Reflux Rod
104	MOTO-LIFT-1100		ML-1100-104	O-Ring 4 x 1.8
105	MOTO-LIFT-1100		ML-1100-105	Guide Casing
106	MOTO-LIFT-1100		ML-1100-106	Protect Casing