



Vestil Manufacturing Corp.

2999 North Wayne Street, P.O. Box 507, Angola, IN 46703
Telephone: (260) 665-7586 -or- Toll Free (800) 348-0868
Fax: (260) 665-1339
Web: www.vestilmfg.com e-mail: info@vestil.com

PAIL-T



Receiving Instructions

After delivery, remove the packaging from the product. Inspect the product closely to determine whether it sustained damage during transport. If damage is discovered, record a complete description of it on the bill of lading. If the product is undamaged, discard the packaging.

NOTE: The end-user is solely responsible for confirming that product design, use, and maintenance comply with laws, regulations, codes, and mandatory standards applied where the product is used.

Technical Service & Replacement Parts

For answers to questions not addressed in these instructions and to order replacement parts, labels, and accessories, call our Technical Service and Parts Department at (260) 665-7586. The Department can also be contacted online at <https://www.vestil.com/page-parts-request.php>.

Electronic Copies of Instruction Manuals

Additional copies of this instruction manual may be downloaded from <https://www.vestil.com/page-manuals.php>.

Table of Contents

	Page
Signal Words.....	2
Safety Instructions.....	2
Exploded View and Bill of Materials.....	3
Specifications.....	3
Using the Product.....	4
Record of Satisfactory Condition.....	4
Inspections & Maintenance.....	4
Labeling Diagram.....	5
Limited Warranty.....	6

SIGNAL WORDS

This manual uses SIGNAL WORDS to indicate the likelihood that a particular action will cause personal injuries or property damage. Signal words also specify the level of seriousness of injury if the product is misused in the ways described. The following signal words are used in this manual.



Identifies a hazardous situation which, if not avoided, WILL result in DEATH or SERIOUS INJURY. Use of this signal word is limited to the most extreme situations.



Identifies a hazardous situation which, if not avoided, COULD result in DEATH or SERIOUS INJURY.



Indicates a hazardous situation which, if not avoided, COULD result in MINOR or MODERATE injury.



Identifies practices likely to result in product/property damage, such as operation that might damage the product.

SAFETY INSTRUCTIONS

Vestil strives to identify all foreseeable hazards associated with the use of its products. Material handling is dangerous and no manual can address every conceivable risk. Ultimately, the most effective way to prevent injury is to apply sound judgment whenever using this device.

WARNING

Risks of serious personal injuries arise from using this device.

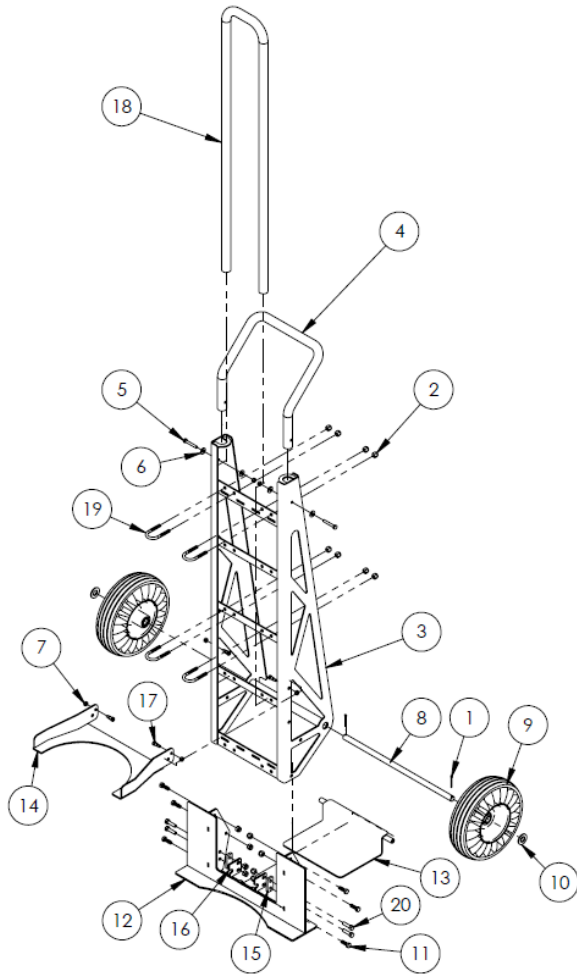
- **DO NOT use the hand truck until you read and understand the entire manual.** Read the manual to refresh your understanding of proper use and maintenance procedures whenever necessary.
- **DO NOT use the truck unless it is in satisfactory condition.** Inspect the truck as instructed in [INSPECTIONS & MAINTENANCE](#) on p. 4. Inspect the area where the truck is used before using the truck.
- **DO NOT perform maintenance on this product UNLESS it is unloaded.** If the unit requires repairs, ONLY install manufacturer-approved replacement parts.
- **DO instruct others to stay clear of the device and the supported load while using the truck.**
- **DO avoid pinch points.** This truck includes pivoting features: pail holder and load supporting plate. Pinch points are created between these features and the truck frame.
- **DO NOT allow people to ride on the truck.**
- **DO NOT lift a pail that weighs more than the capacity of your unit.** Capacity information is provided on label 1153. See [LABELING DIAGRAM](#) on p. 5. Also see [SPECIFICATIONS](#) on p. 3. Only lift 1 pail at a time.
- **DO NOT transport filled pails unless pail lids are tightly sealed.**
- **DO NOT traverse inclines or steps/stairs.** If traversing sloped terrain is unavoidable, do not transport the truck by yourself unless you can easily control it. Remain upslope from the truck at all times.
- **DO enlist a coworker to help you lift, load, move, and unload the unit whenever necessary.**
- **DO unload the truck before leaving it unattended.**
- **DO NOT use the truck UNLESS all labels are in place and readable.** See [LABELING DIAGRAM](#), p. 5. **DO NOT modify this product in any way.** Modifications might make the truck unsafe to use and automatically void the [LIMITED WARRANTY](#).

NOTICE

Proper use, maintenance, and storage are essential for this product to function properly.

- Always use this product in accordance with the instructions in this manual and consistent with any training relevant to machines, devices, etc. used in conjunction with this product.
- Keep the product clean & dry. Lubricate moving parts.

EXPLODED VIEW AND BILL OF MATERIALS (33-006-206)



ITEM NO.	PART NO.	DESCRIPTION	QTY.
1	65078	EXTENDED PRONG COTTER PIN, ZINC FINISH, 1/8" X 1 1/2"	2
2	37021	NYLON INSERT LOCK NUT, GRADE 2, ZINC FINISH, 5/16"-18	18
3	16-514-194	FRAME WELDMENT	1
4	16-025-060	HANDLE BAR FRAME	1
5	11010	HEX BOLT, GRADE A, ZINC PLATED, 1/4"-20 X 1 3/4"	2
6	33004	FLAT WAHSER, USS, ZINC PLATE, 1/4"	4
7	36102	HEX NUT, GRADE A, ZINC PLATED, 1/4-20	6
8	16-112-039	AXLE PIN	1
9	16-132-265	10" SHOCK ABSORBING WHEEL	2
10	33090	FLATER WAHSER, SAE, 5/8	2
11	11055	HEX BOLT, GRADE A, ZINC PLATED, 5/16-18 X 1	6
12	33-514-253	FRAME WELDMENTS, ATTACHMENT	1
13	33-513-091	DECK/NOSE PLATE WELDMENT	1
14	33-514-252	PAIL LIFTER/CARRIER WELDMENT	1
15	33-113-025	SPACER BLOCK	2
16	33-016-143	HINGE BRACKET	2
17	26313	SHSB, 5/16 X 3/8 SHOULDER, 1/4-20 THREAD	4
18	33-014-419	FRAME, PAIL HODING HOOP	1
19	42012	5/16-18 U-BOLT FOR 3/4" PIPE	4
20	11057	HEX BOLT, GRADE A, ZINC PLATED, 5/16-18 X 1.25	4

SPECIFICATIONS

Specifications for PAIL-T hand trucks are provided on Vestil's website. To access the specifications document, navigate to this webpage: <https://www.vestil.com/product.php?FID=906>. Click the "Specifications" tab. Scroll the page to the entry for the model you purchased, and click the button in the PDF column that looks like a pencil inside a blue box. A PDF file will open. This file is the specifications document. Print a copy of the document and keep it with your copy of this manual. The following is an exemplar specifications document (33-007-206).

PAIL HAND TRUCK - PAIL-T

APPROX WEIGHT: 48 lbs. DOES NOT INCLUDE WEIGHT OF POWER OR PACKAGING!
 *** ANY ADDITIONS, DELETIONS, OR OMISSIONS MUST BE CORRECTED ON THIS DRAWING AS THIS DRAWING WILL BE CONSIDERED ALL INCLUSIVE ***
 ALL GRAPHICS PROVIDED ARE FOR REFERENCE ONLY. IF CERTAIN DIMENSIONS ARE CRITICAL PLEASE VERIFY THOSE DIMENSIONS WITH YOUR SALESPERSON

STANDARD FEATURES
 MODEL NUMBER IS PAIL-T
 OVERALL WIDTH IS 19 1/8"
 OVERALL LENGTH IS 19 1/2"
 OVERALL HEIGHT IS 55 3/4"
 MAX CAPACITY IS 500 LBS
 NOSE PLATE 9 1/2" W X 6 11/16" LG
 10" SHOCK ABSORBING WHEELS
 FITS PAIL-54 (5 GALLON PAIL)
 TOUGH BAKED IN POWDER COATED BLUE FINISH
 UNIT CAN MOVE UP TO FOUR 5-GALLON STACKED PLASTIC PAIS AT ONCE

SPECIAL FEATURES
 NONE

APPROVAL
 I, THE UNDERSIGNED, AGREE THAT THE PRODUCT AS REPRESENTED SATISFIES DESIGN AND DIMENSION REQUIREMENTS. I ALSO ACKNOWLEDGE MY DUTY TO CONFIRM PRODUCT AND INSTALLATION COMPLIANCE WITH ALL APPLICABLE FEDERAL, STATE AND LOCAL REGULATIONS AND STANDARDS.
ANY MODIFIED UNITS ARE NON-RETURNABLE
 [] As drawn [] As marked
 Signed: _____ Date: _____
 Printed Name: _____
 LEAD TIME WILL START UPON RECEIPT OF SIGNED APPROVAL DRAWING

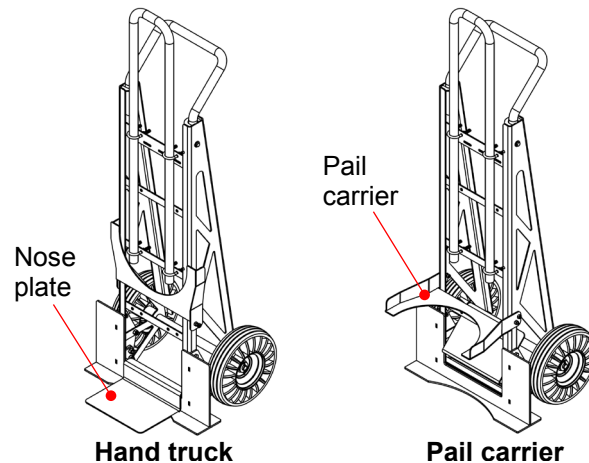
FOR INTERNAL USE ONLY	DISTRIBUTOR'S NAME:	P.O.#
PROJECT SIGN OFF	VESTIL MANUFACTURING	X
SALES	DRAWN BY:	P.O.#
ENG.	DATE:	X
FAB.	REFERENCE: X	SALES: X
POWER	QUOTED LEAD TIME: X	FILE NAME: X
	QUOTE #	33-007-206

SCALE: 1:12

USING THE PRODUCT

Do not traverse sloped ground while the truck is loaded unless you can easily control the truck. Always remain upslope of the truck while traversing slopes. This product can be used as either: 1) A standard hand truck; or 2) A pail carrier.

- 1) To configure as a hand truck, deploy the nose plate. Place a load on the nose plate. Grasp the handle and tilt the truck back. Push the truck and load to the destination
- 2) To use the device as a pail carrier, fold the nose plate and deploy the pail carrier. Make sure that the pail is covered with a lid, if necessary.



RECORD OF SATISFACTORY CONDITION (THE “RECORD”)

Before putting the hand truck into service, make a detailed record of its condition. Include observations about all features: pivot points, welds, frame elements, nose plate, pail carrier, fasteners (anchor bolts, bolts, nuts, washers, etc.), axle, and wheels. Thoroughly photograph the unit from multiple angles so that all features are clearly imaged. Photograph all labels applied to the product. Describe where each label is located. Collect all photographs and writings in a single file. This file is a record of the product in satisfactory condition. Compare the results of each inspection to this [RECORD](#) to determine if the unit is in satisfactory condition. Do not use the product unless it is in satisfactory condition

INSPECTIONS AND MAINTENANCE

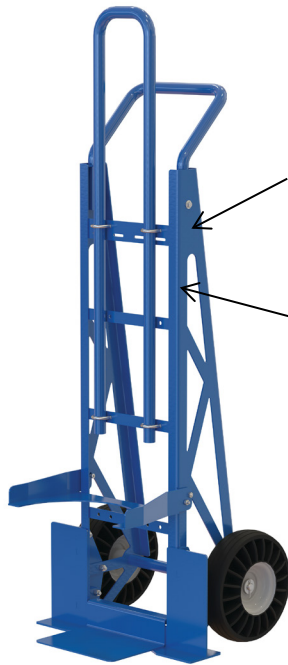
Compare inspection results to the [RECORD](#). Do not continue to use the product unless every component is in [SATISFACTORY CONDITION](#). Cosmetic changes, like damaged paint/powder coat do not constitute changes from satisfactory condition. However, touchup paint should be applied to all affected areas as soon as damage occurs. Contact [TECHNICAL SERVICE](#) to order replacement parts. Contact information is provided on the cover page of this manual.

Inspect the following at least once per month:

1. Surfaces – Check all surfaces of the product for dirt or other matter, especially fluids. Clean the truck.
2. Hardware, fasteners – Examine hardware & fasteners (axle, bolts, nuts, pins, & clips). Replace damaged/worn hardware.
3. Examine the frame for wear, breaks, corrosion/rust, metal fatigue, and other forms of damage (e.g. impact damage). Pay particular attention to the nose plate and pail carrier. Before features should be securely attached to the frame and should pivot smoothly. Closely inspect pivot points for rusting/corrosion. Wheels must be securely attached to the axle.
4. Labels – Replace damaged labels. Replace a label if it is not easily readable from a reasonable distance.
5. Overall structure – Examine the whole structure for rusting or metal erosion, rot, thinned regions. In particular, examine pivot points, and ground-contacting elements. If rusting is purely superficial, remove the rust/corrosion. Clean the affected area and apply touchup paint. If rusting, rot, or thinning has weakened the material, contact [TECHNICAL SERVICE](#) for advice.

LABELING DIAGRAM

Label content and locations are subject to change so your product might not be labeled exactly as shown. Compare this diagram to the [RECORD](#) (p. 4). If differences exist between the diagram and the [RECORD](#), contact [TECHNICAL SERVICE](#). Replace all labels that are damaged, missing, or not easily readable (e.g. faded). To order replacement labels, contact the technical service and parts department online at http://www.vestilmfg.com/parts_info.htm. Alternatively, you may request replacement parts and/or service by calling (260) 665-7586 and asking the operator to connect you to the [TECHNICAL SERVICE AND PARTS DEPARTMENT](#).



⚠ WARNING	⚠ ADVERTENCIA	⚠ AVERTISSEMENT
Do not operate or move with unstable loads DO NOT LOAD beyond rated capacity DISTRIBUTE LOAD EVENLY DO NOT sit or ride	No use a mueva con cargas inestables No cargue mas de la capacidad tasada DISTRIBUYA LA CARGA A NIVEL NO SE SIENTE o vaya en el carro	Ne pas utiliser avec une charge instable NE PAS CHARGER au-delà du débit nominale DISTRIBUER la charge régulièrement NE PAS VOUS ASSEoir OU VOUS PROMENER sur le chariot

Label 658

MODEL / MODÉLO / MODÈLE _____
 WEIGHT / PESO / MASS _____
 CAPACITY / CAPACIDAD / CAPACITÉ _____
 SERIAL / SERIE / SÉRIE _____
 UNITS: 2.2 lb. = 1kg 1" (or 1in.) = 2.54cm **1153**

Label 1153



LIMITED WARRANTY

Vestil Manufacturing Corporation (“Vestil”) warrants this product to be free of defects in material and workmanship during the warranty period. Our warranty obligation is to provide a replacement for a defective, original part covered by the warranty after we receive a proper request from the Warrantee (you) for warranty service.

Who may request service?

Only a warrantee may request service. You are a warrantee if you purchased the product from Vestil or from an authorized distributor AND Vestil has been fully paid.

Definition of “original part”?

An original part is a part used to make the product as shipped to the Warrantee.

What is a “proper request”?

A request for warranty service is proper if Vestil receives: 1) a photocopy of the Customer Invoice that displays the shipping date; AND 2) a written request for warranty service including your name and phone number. Send requests by one of the following methods:

<u>US Mail</u>	<u>Fax</u>	<u>Email</u>
Vestil Manufacturing Corporation 2999 North Wayne Street, PO Box 507 Angola, IN 46703	(260) 665-1339 <u>Phone</u> (260) 665-7586	info@vestil.com Enter “Warranty service request” in subject field.

In the written request, list the parts believed to be defective and include the address where replacements should be delivered. After Vestil receives your request for warranty service, an authorized representative will contact you to determine whether your claim is covered by the warranty. Before providing warranty service, Vestil will require you to send the entire product, or just the defective part (or parts), to its facility in Angola, IN.

What is covered under the warranty?

The warranty covers defects in the following original, dynamic parts: motors, hydraulic pumps, motor controllers, and cylinders. It also covers defects in original parts that wear under normal usage conditions (“wearing parts”), such as bearings, hoses, wheels, seals, brushes, and batteries.

How long is the warranty period?

The warranty period for original dynamic components is 30 days. For wearing parts, the warranty period is 30 days. Both warranty periods begin on the date Vestil ships the product to the Warrantee. If the product was purchased from an authorized distributor, the periods begin when the distributor ships the product. Vestil may, at its sole discretion, extend a warranty period for products shipped from authorized distributors by up to 30 days to account for shipping time.

If a defective part is covered by the warranty, what will Vestil do to correct the problem?

Vestil will provide an appropriate replacement for any *covered* part. An authorized representative of Vestil will contact you to discuss your claim.

What is not covered by the warranty?

The Warrantee (you) are responsible for paying labor costs and freight costs to return the product to Vestil for warranty service.

Events that automatically void this Limited Warranty.

- Misuse;
- Negligent assembly, installation, operation or repair;
- Installation/use in corrosive environments;
- Inadequate or improper maintenance;
- Damage sustained during shipping;
- Collisions or other accidents that damage the product;
- Unauthorized modifications: Do not modify the product IN ANY WAY without first receiving written authorization from Vestil.

Do any other warranties apply to the product?

Vestil Manufacturing Corp. makes no other express warranties. All implied warranties are disclaimed to the extent allowed by law. Any implied warranty not disclaimed is limited in scope to the terms of this Limited Warranty. Vestil makes no warranty or representation that this product complies with any state or local design, performance, or safety code or standard. Noncompliance with any such code or standard is not a defect in material or workmanship.