

OWNER'S MANUAL

Pallet Washer

Model: PPW-2500

TABLE OF CONTENTS

INTRODUCTION	3
<i>MANUAL PALLET WASHER</i>	3
Layout	4
PARTS LIST	5
Spare Parts List	8
<i>Recommended Spare Parts</i>	8
Notes	9
Warranty	10

INTRODUCTION

Minimize the Risk of Contamination with an Effective Pallet System. Our stainless steel washing equipment used and trusted by the Food, Pharmaceutical, and Chemical Industries; Cleans wood pallets, plastic pallets, aluminum pallets, totes, containers and freezer spacers. Minimize the risk of introducing Salmonella, E-coli, Listeria, Allergens, dust, dirt and other contaminants into the WIP and Production areas. Rinse, clean, sanitize, remove blood, fats, powders, dues, oils, grease, and loose debris that can accumulate on pallets of all types, which is an essential part of a HACCP or self-auditing program. We offer an inexpensive rinse system for low volume applications or automatic system which wash and dry up to 200 pallets per hour.

MANUAL PALLET WASHER

The PPW-2500 Pallet washing cabinet for low volume washing applications. 10-gallon waste water tank with 2" drain hole. 304 Stainless steel construction. Spray shields and bristle brushes on both entry and exit openings. Handles pallets up to 48" tall and 6.5 Wide.

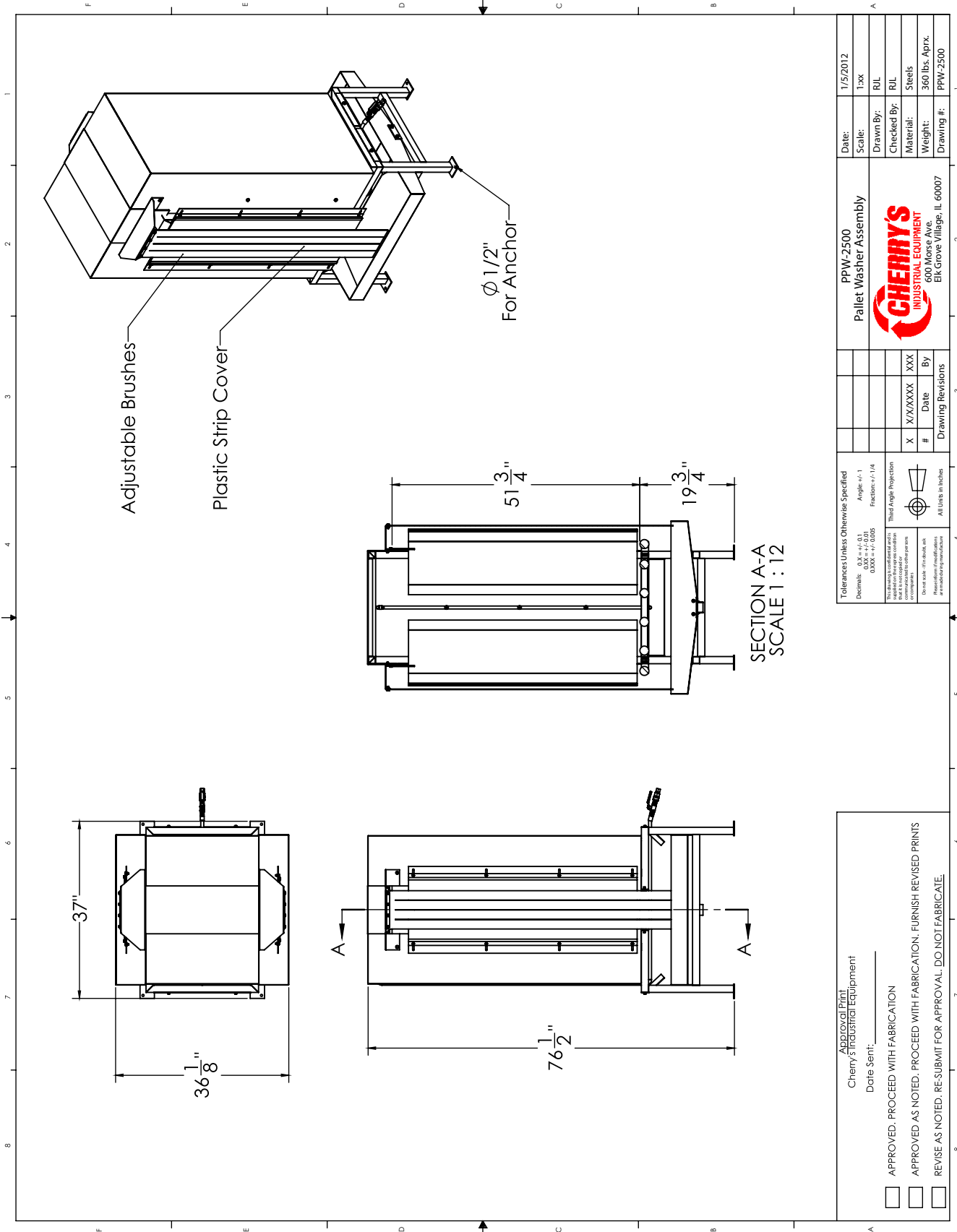
Product Description

PPW-2500 Pallet Washer Cabinet requires water pressure from an electric/gas pressure washer* with an output of at least 6 GPM and 2,500 PSI. This unit contains seven 65 Degree spray nozzles, (3) three on each side and on top for complete coverage. Equipped with (6) stainless steel rollers to assist in manually pushing and pulling the pallet through the washzone. Entry and exit brushes on both ends help clean the pallet and contain over-spray. Weighs 350 lbs, overall dimensions 76" T x 39" W x 39" D.

CHERRY'S Industrial
Equipment®

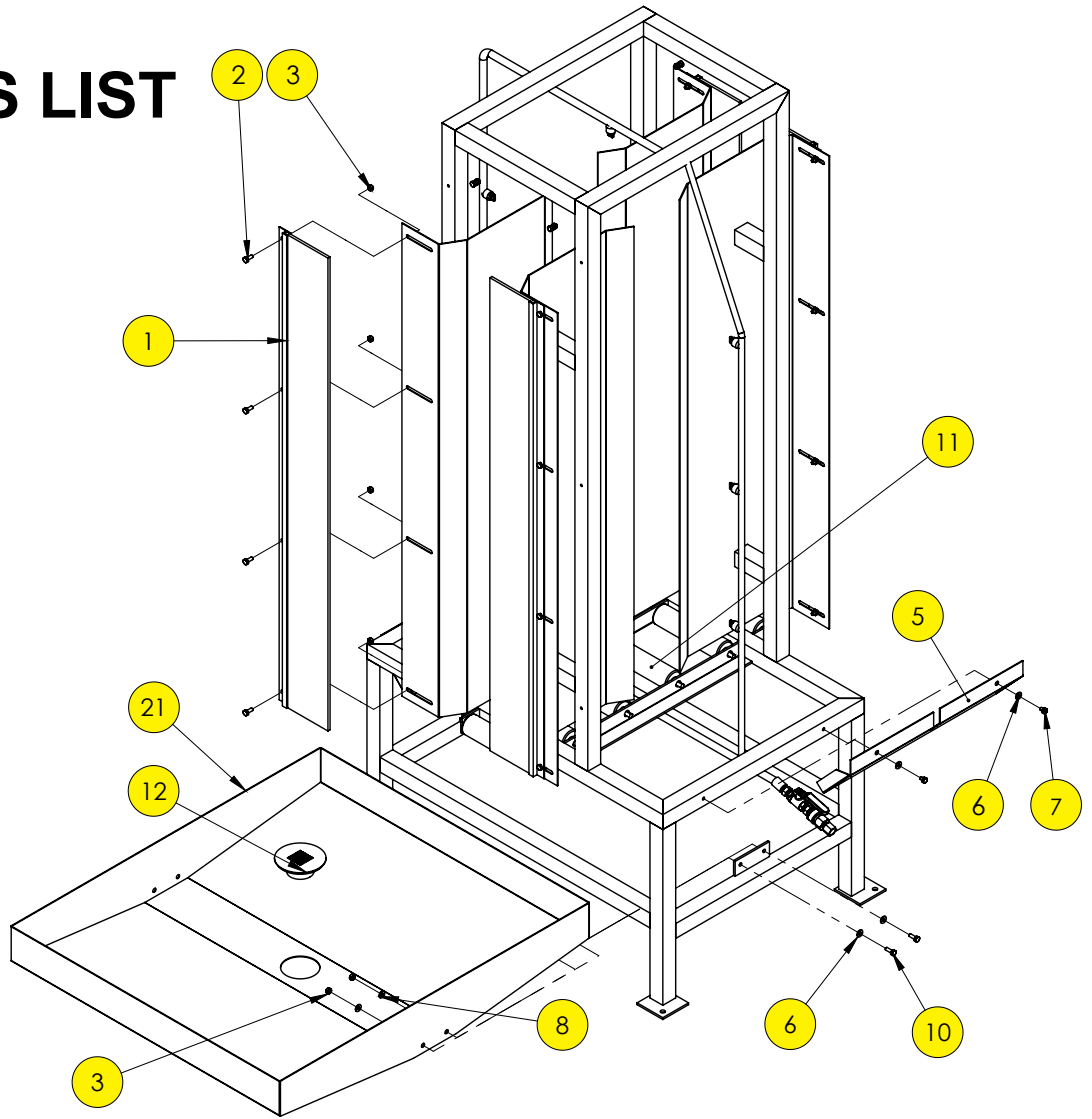
Pallet Washer

Layout



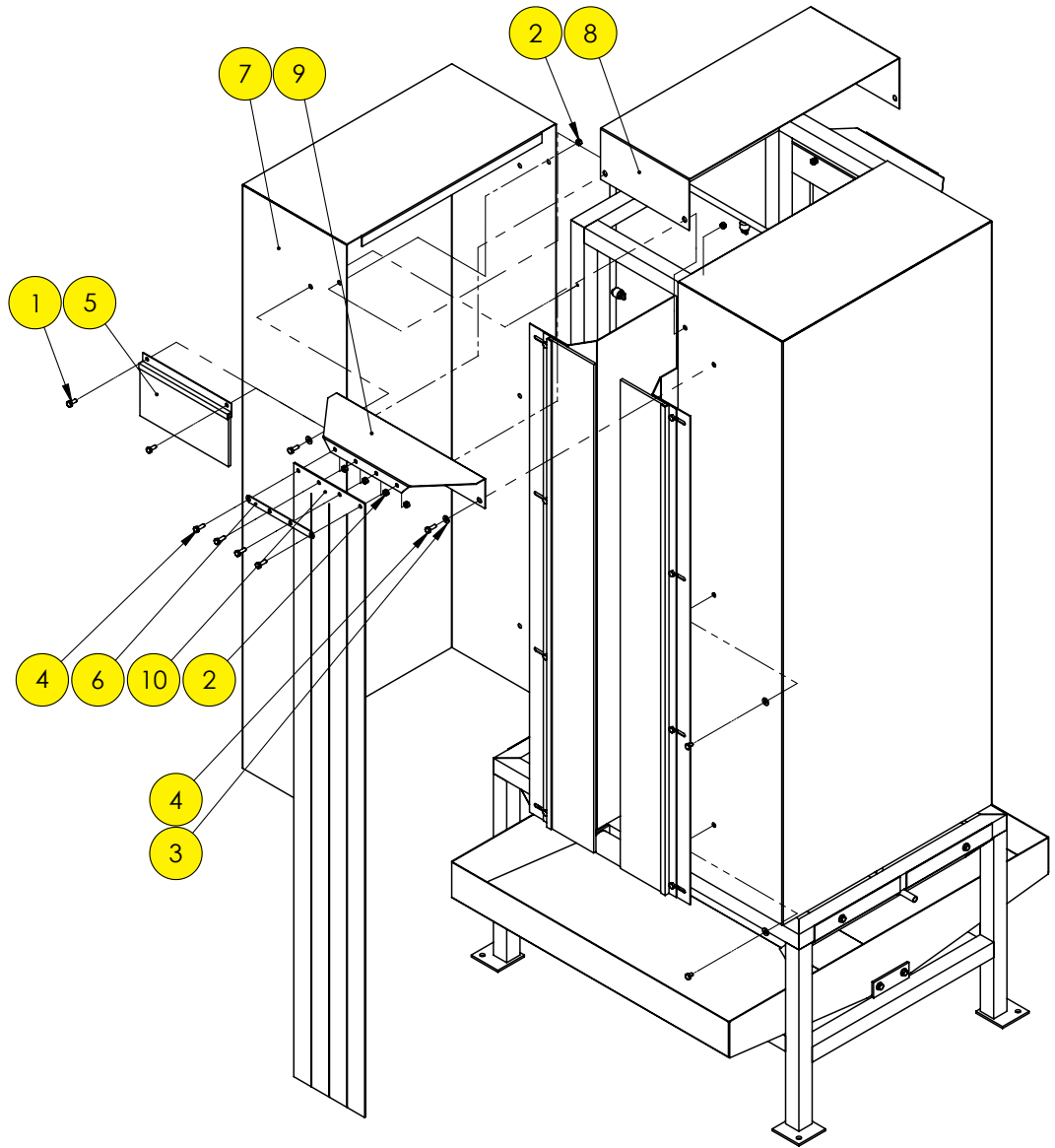
Pallet Washer

PARTS LIST



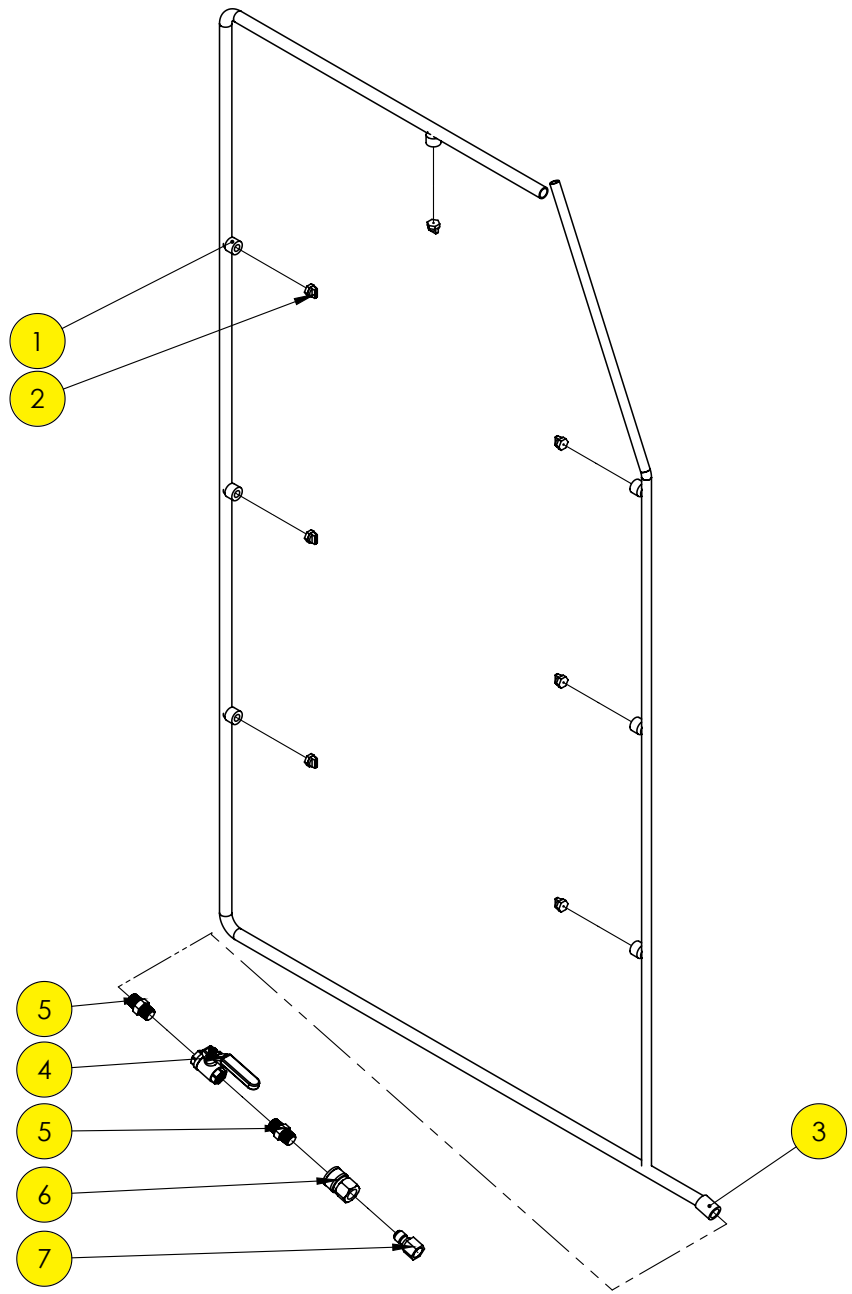
Item #	Part #	QTY	Description
1	G680CLA48PBC-47.75	4	47-3/4" Long Brush
2	70002F	20	1/4" x 5/8" S.S. HCS
3	70860F	32	1/4" S.S. Nylock Nut
4	PPW-2500-DP01	1	Bottom Drip Pan
5	PPW-2500-DP03	1	Side Drip Pan
6	71013F	8	1/4" S.S. Flat Washer
7	70000F	12	1/4" x 3/8" S.S. HCS
8	11331165F	16	1/4" S.S. Bond Washer
10	70003F	16	1/4" x 3/4" S.S. HCS
11	OMNI #41661	6	Stainless Steel Conveyor Roller
12	253153	1	Oatey 2" PVC No Caulk Drain

Pallet Washer



Item #	Part #	QTY	Description
1	70002F	20	1/4" x 5/8" S.S. HCS
2	70860F	32	1/4" S.S. Nylock Nut
3	11331165F	16	1/4" S.S. Bond Washer
4	70003F	16	1/4" x 3/4" S.S. HCS
5	G680CLA48PBC-10	2	10" Short Brush
6	PPW-2500-CV05	2	S.S. Washer Plate
7	PPW-2500-CV01	2	Side Cover
8	PPW-2500-CV03	1	Top Cover
9	PPW-2500-CV04	2	Strip Mount
10	PPW-2500-PS	2	Plastic Strip

Pallet Washer



Item #	Part #	QTY	Description
1	45525K572	7	1/4" S.S. High Pressure Half Coupling
2	87080960	7	"V-Jet" Nozzle
3	0464217	1	3/8" S.S. Coupler
4		1	3/8" S.S. Ball Valve
5	426229F	2	3/8" S.S. High Pressure Pipe Connector
6	CST6B	1	Brass Male Quick Disconnect
7	CPST6B	1	Brass Female Quick Disconnect

SPARE PARTS LIST

RECOMMENDED SPARE PARTS

Item #	Part #	QTY	Description
1.	G680CLA48PBC-47.75	4	47-3/4" Long Brush
2.	G680CLA48PBC-10	2	10" Short Brush
3.	OMNI #41661	6	Stainless Steel Conveyor Roller
4.	87080960	7	"V-Jet" Nozzle
5.			
5.			
6.			
7.			
8.			
9.			
10.			

CHERRY'S INDUSTRIAL EQUIPMENT
600 MORSE AVE.
ELK GROVE VILLAGE, IL 60007

SERVICE, PARTS, & SUPPORT: 877.350.2748
service@cherrysind.com

CHERRY'S Industrial
 Equipment®

Thank you for your recent purchase. As you know Cherry's Industrial Equipment has a reputation for building Pallet Inverting and Pallet Handling Equipment that is rugged, dependable and built to last. The key to maximizing machine uptime is following the recommended preventative maintenance program and using OEM parts. We offer filters, seal kits and other consumables needed for scheduled maintenance and over time other replacement parts needed for repair. Cherry's Industrial maintains a large inventory of parts, available for immediate shipment and offers ongoing technical support to keep the machine in operation. The spare parts list above itemizes the most common replacement parts requested over the life of a machine. Please contact Cherry's Industrial Equipment parts department at **877-350-2748** to provide a quote specific for your needs.

WARRANTY

Cherry's Industrial Equipment Corp. warrants this product to be free from defects in material or workmanship for a period of (1) year of single shift usage from date of shipment, providing claim is made in writing within that time period. This warranty shall not cover modified designs for special applications, failure or defective operation caused by misuse, misapplication, negligence or accident, exceeding recommended capacities, failure to perform required maintenance or altering or repairing, unless alteration is authorized by Cherry's Industrial Equipment Corp. Except as set forth herein, there are no other warranties, express or implied, including the warranties of merchantability and fitness for a particular purpose, all of which are hereby excluded.

Cherry's Industrial Equipment Corp makes no warranty or representation with respect to the compliance of any product with state or local safety or product standard codes, and any failure to comply with such codes shall not be considered a defect of material or workmanship under this warranty. Cherry's Industrial Equipment Corp shall not be liable for any direct or consequential damages arising out of such noncompliance.

Cherry's Industrial Equipment Corp's obligation under this warranty is limited to one (1) year labor and one (1) year parts of the replacement or repair of defective components at its factory or another location at Cherry's Industrial Equipment Corp's discretion. This is the buyer's sole remedy. Except as stated herein, Cherry's Industrial Equipment Corp will not be liable for any loss, injury or damage to persons or property, nor for direct, indirect, or consequential damage of any kind, resulting from failure or defective operation of said product.

The stated warranty does not cover standard components categorized as wear or maintenance parts. These parts include, but are not limited to, buttons, contacts, chains & drive pins, track rollers, filters and wear pads. For a full list of components considered wear or maintenance parts please contact your Cherry's Industrial Equipment representative.

Feel free to contact us via our toll-free number or email:

SERVICE, PARTS, & SUPPORT: 877.350.2748 or service@cherrysind.com

SALES: 800.350.0011 or sales@cherrysind.com

Thank you for your business.

IF YOUR MACHINE IS UNDER WARRANTY, WE WILL REPLACE THE DEFECTIVE COMPONENT AND YOUR COMPANY WILL BE INVOICED AT THAT TIME.

WE WILL ISSUE A WARRANTY CREDIT UPON THE RETURN OF THE DEFECTIVE ITEMS FOR THE FULL AMOUNT OF THE INVOICE.

CHERRY'S Industrial Equipment®

CHERRY'S INDUSTRIAL EQUIPMENT

600 Morse Ave.
Elk Grove Village, IL 60007
800.350.0011

CHERRY'S *Industrial
Equipment®*

Cherry's Industrial Equipment Corp.
600 Morse Ave., Elk Grove Village, Illinois 60007

Tel. **(800)350-0011 or (847)364-0200**
Fax **(800)350-8454 or (847)690-0481**
Web **www.cherrysind.com**
Email **info@cherrysind.com**