



# Vestil Manufacturing Corp.

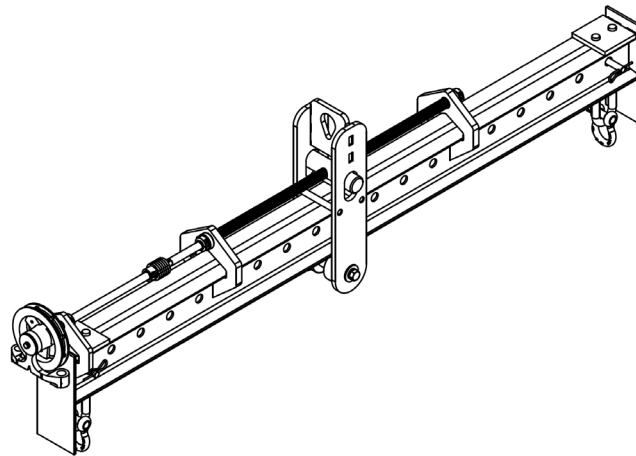
2999 North Wayne Street, P.O. Box 507, Angola, IN 46703

Telephone: (260) 665-7586 -or- Toll Free (800) 348-0868

Fax: (260) 665-1339

Web: [www.vestil.com](http://www.vestil.com) e-mail: [info@vestil.com](mailto:info@vestil.com)

## SBM-25/40-UBA-C Adjustable Spreader Beams Instruction Manual



### Receiving Instructions

After delivery, remove the packaging from the product. Inspect the product closely to determine whether it sustained damage during transport. If damage is discovered, record a complete description of it on the bill of lading. If the product is undamaged, discard the packaging.

**NOTE:** The end-user is solely responsible for confirming that product design, use, and maintenance comply with laws, regulations, codes, and mandatory standards applied where the product is used.

### Technical Service & Replacement Parts

For answers to questions not addressed in these instructions and to order replacement parts, labels, and accessories, call our Technical Service and Parts Department at (260) 665-7586. The department can also be contacted online at [http://www.vestilmfg.com/parts\\_info.htm](http://www.vestilmfg.com/parts_info.htm).

### Electronic copies of Instruction Manuals

Additional copies of this instruction manual may be downloaded from <https://www.vestil.com/page-manuals.php>.

### Table of Contents

Signal Words.....	2
Safety Instructions.....	2-3
National Standards.....	3
Record of Satisfactory Condition.....	3
Load Tests.....	3
Specifications.....	3, 4
SBM-25-UBA-C Exploded View and Bill of Materials.....	5
SBM-40-UBA-C Exploded View and Bill of Materials.....	6
Using the Lifter.....	7
Inspections & Maintenance.....	8
Labeling Diagram.....	9
Limited Warranty.....	10

## SIGNAL WORDS

This manual uses SIGNAL WORDS to draw attention to uses of the product that could result in personal injuries, as well as the probable seriousness of those injuries. Other signal words call attention to uses likely to cause property damage. Signal words used in this manual appear below along with the definition of each word.



Identifies a hazardous situation which, if not avoided, WILL result in DEATH or SERIOUS INJURY. Use of this signal word is limited to the most extreme situations.



Identifies a hazardous situation which, if not avoided, COULD result in DEATH or SERIOUS INJURY.



Identifies practices likely to result in product/property damage, such as operation that might damage the product.

## SAFETY INSTRUCTIONS

Vestil strives to identify all foreseeable hazards associated with the use of its products. However, material handling is dangerous and no manual can address every conceivable risk. Ultimately, the most effective way to prevent injury is to apply sound judgment whenever using this device.



Material handling is dangerous and could result in serious personal injuries or death.

- **Read and understand the entire manual before using or servicing this lifter.** DO NOT use this device until you read and understand the entire instruction manual. Read the manual to refresh your understanding of proper use and maintenance procedures.
- This lifting device must only be used by designated persons and lifting device inspectors. Maintenance and test personnel should only use this device when necessary to perform their duties.
- DO NOT use this lifter if it is damaged, malfunctioning, or missing parts.
- DO NOT modify the product in any way without first obtaining written approval from Vestil. Unapproved modifications automatically void the **LIMITED WARRANTY** and might make the product unsafe to use.
- Only attach the lifter to a properly functioning safety hook, i.e. a hook with a spring latch.
- DO NOT remove or obscure any label. Confirm the placement and legibility of all labels as shown in the **LABELING DIAGRAM** on p. 9. DO NOT use this device UNLESS all labeling is readable and undamaged.
- Inspect the lifter before each use. See **INSPECTIONS AND MAINTENANCE** on p. 9.
- Review safety messages in the manuals for your crane, trolley, hoist, rigging, and all other devices used in conjunction with this spreader beam.
- Tighten the shackle pins before each use. See “Hook with Shackle” in Exploded Views on **pages 5 & 6**.
- Make sure your travel path is clear before picking up a load.
- DO NOT use this lifter to move a load item if the item does not balance when it is elevated. The beam should be horizontal/level when the load is elevated.
- DO NOT lift more than 1 item at a time.
- DO NOT lift people. This device must only be used to lift materials.
- Center the hoist above the load item before connecting it to a load. Centering minimizes load swing as the load lifts off of the ground. DO NOT side load the hoist/lifter.
- DO NOT sit, or ride, on the load item or the lifter.
- DO NOT exceed the rated load/capacity of your lifter. Capacity figures are provided in **SPECIFICATIONS** tables on **page 4**, as well as on product labeling. See **LABELING DIAGRAM** on p. 9.
- Carefully eliminate slack in the hoist line and rigging before raising the load. Lift and lower loads slowly and steadily. Avoid jolting the loads.
- Slowly raise the loaded lifter a few inches above the ground to determine whether the load is stable.
- DO NOT lift a load higher than necessary. See **USING THE LIFTER** on p. 7. Keep the suspended load as close to the ground as possible while moving it and avoid obstructions.
- Avoid contact with the load item while it is suspended. DO NOT get in front of or behind a suspended load. Avoid putting your feet and other parts of your body beneath the load item. NEVER lift material over yourself or other people.
- Watch the load carefully while lifting and moving it. The load could swing or spin while elevated.



[Continued from p. 2.]

- DO NOT leave a suspended load unattended.
- DO NOT pull, drag, or slide loads with the lifter.

## NATIONAL STANDARDS

This product is a “Below-the-Hook Lifting Device” (BTH lifter). [ASME standard B30.20](#) (the “Standard”) applies to BTH lifters. Acquire a copy of the latest version of the Standard before putting the lifter into service. Follow all use and maintenance/care instructions provided in the Standard as well as all other provisions for owners and users. If content in this manual conflicts with any recommendation or mandatory provision in the Standard, apply the provision from the Standard. Vestil encourages you to immediately contact [TECHNICAL SERVICE](#) if you discover any conflicts.

## RECORD OF SATISFACTORY CONDITION

Record the condition of the lifter before putting it into service. Measure the length and width of the shackles (part no. 99-145-019). Include a width measurement of the mouth of each shackle, i.e. the area that receives the shackle pin. Record your measurements. Move the bale assembly through its full range by pulling the right side of the chain until the bale assembly reaches the limit of movement. Then, pull the left side of the chain to move the bale assembly in the opposite direction until it cannot move further. Describe the amount of force necessary to pull the chain and move the bale assembly. Include a description of how the assembly sounds as it moves in each direction. Thoroughly photograph the unit from multiple angles. Include close range photos of all labeling, the lifting shackles, the bale assembly, fasteners (pins, bolts, nuts, etc.), rollers, and welds. Collate all photographs and writings into a single file. Mark the file appropriately to identify it. The file provides a record of the lifter in satisfactory condition. Compare the results of all inspections (see p. 8) to this *RECORD* to determine whether the unit is in satisfactory condition. If the lifter is not in satisfactory condition, repair it before returning it to service. Purely cosmetic changes, like damaged paint/powdercoat, do not constitute changes from satisfactory condition. However, touchup paint should be applied to all affected areas as soon as cosmetic damage occurs to prevent rusting and corrosion. If left unaddressed, rusting/corrosion will alter the lifter from satisfactory condition and could make it unsafe to use.

## LOAD TESTS

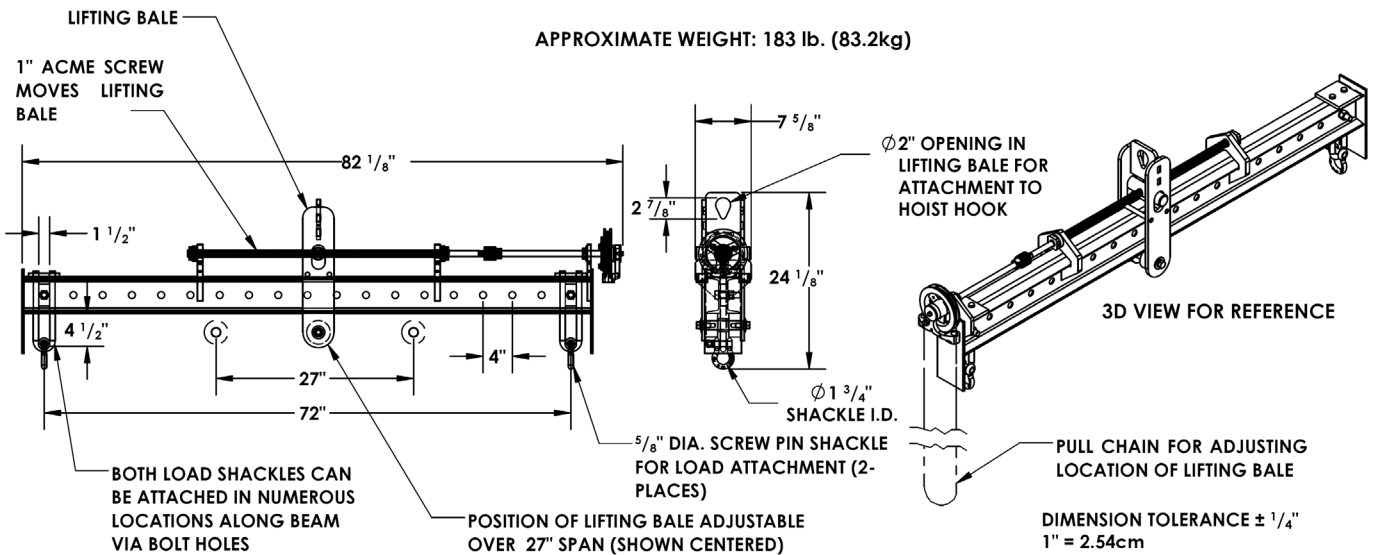
After creating a [RECORD OF SATISFACTORY CONDITION](#) and before using the lifter for the first time, a qualified person should conduct a load test. The test load should be 125% of the rated load of the lifter. The rated load (capacity) of model SBM-25-UBA-C is 2,500 lb. (1136.4kg) of so the test load should be 3,125 pounds (1420.5kg). For model SBM-40-UBA-C, the test load should be 5,000 lb. (2272.7kg). Raise the lifter until it is suspended. Return the lifter to the ground and unload it. Perform a [Monthly Inspection](#) as described in [INSPECTIONS AND MAINTENANCE](#) (below). The lifter must undergo load testing immediately after it is repaired, modified, or altered.

## SPECIFICATIONS

Dimensions, net weight, and capacity information for both models is provided in the model specific “Specifications” section on [page 4](#). However, minor changes in product design might alter specifications, particularly dimensions and net weight. To provide instant access to up-to-date information, specifications documents for SBM-series spreader beams are available online to anyone who visits the Vestil website. Acquire the appropriate specifications document by opening this webpage: <https://www.vestil.com/category.php?CID=94>. Select “Quick Adjust Spreader Beams”. Click the “Specifications” tab. Scroll the page to the entry for the specific model you purchased. Click the button in the “PDF” column that looks like a pencil inside a blue-bordered box. A PDF file will open. This file is the specifications document. Print a copy of the document as soon as your product is delivered and keep it with your copy of this manual. If you encounter difficulties while trying to obtain a copy of the specifications document, contact [TECHNICAL SERVICE](#). Contact information is provided on the cover page of this manual. NOTE: Some models might be discontinued between revisions of this manual.

### SPECIFICATIONS: SBM-25-UBA-C

08-007-442



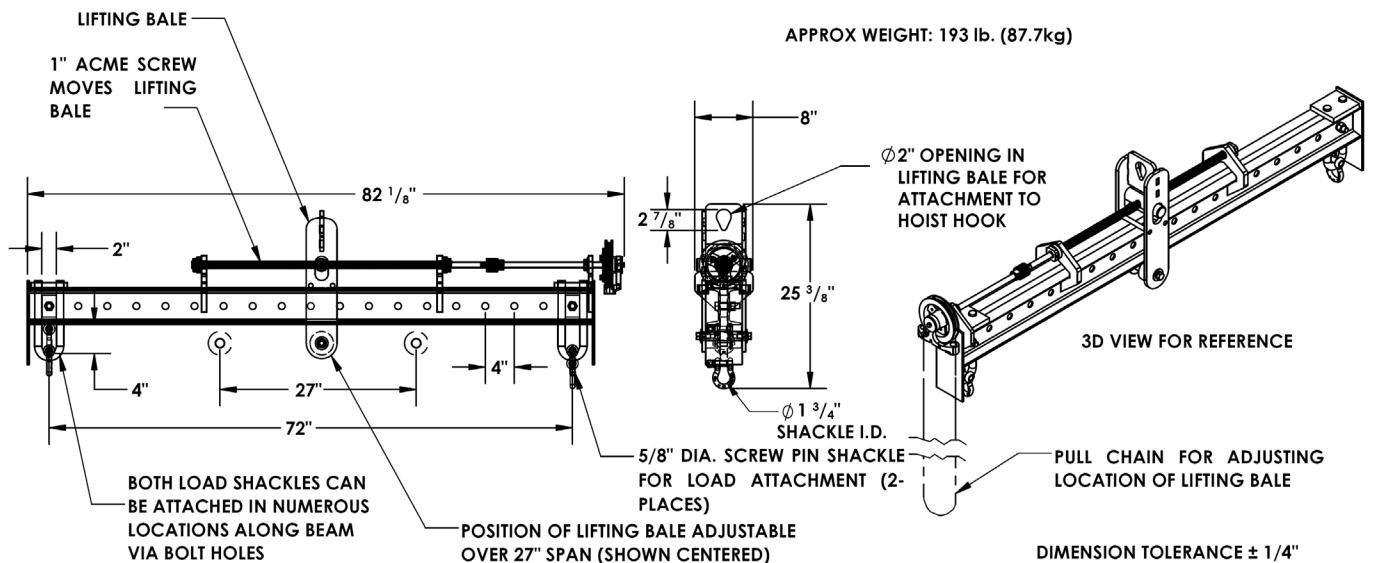
### STANDARD FEATURES

Overall length: 82 1/2" (210.0cm)  
 Usable length: 72" (182.9cm)  
 Overall width: 7 5/8" (19.4cm)  
 Overall height: 24 1/8" (71.4cm)

Capacity: 2,500 lb. (1136.4kg)  
 Middle lift bracket adjustable over 27" (68.6cm) range  
 Lateral lifting bales adjustable in 4" (10.2cm) increments  
 Weight: 183 lb. (83.2kg)

### SPECIFICATIONS: SBM-40-UBA-C

08-007-443



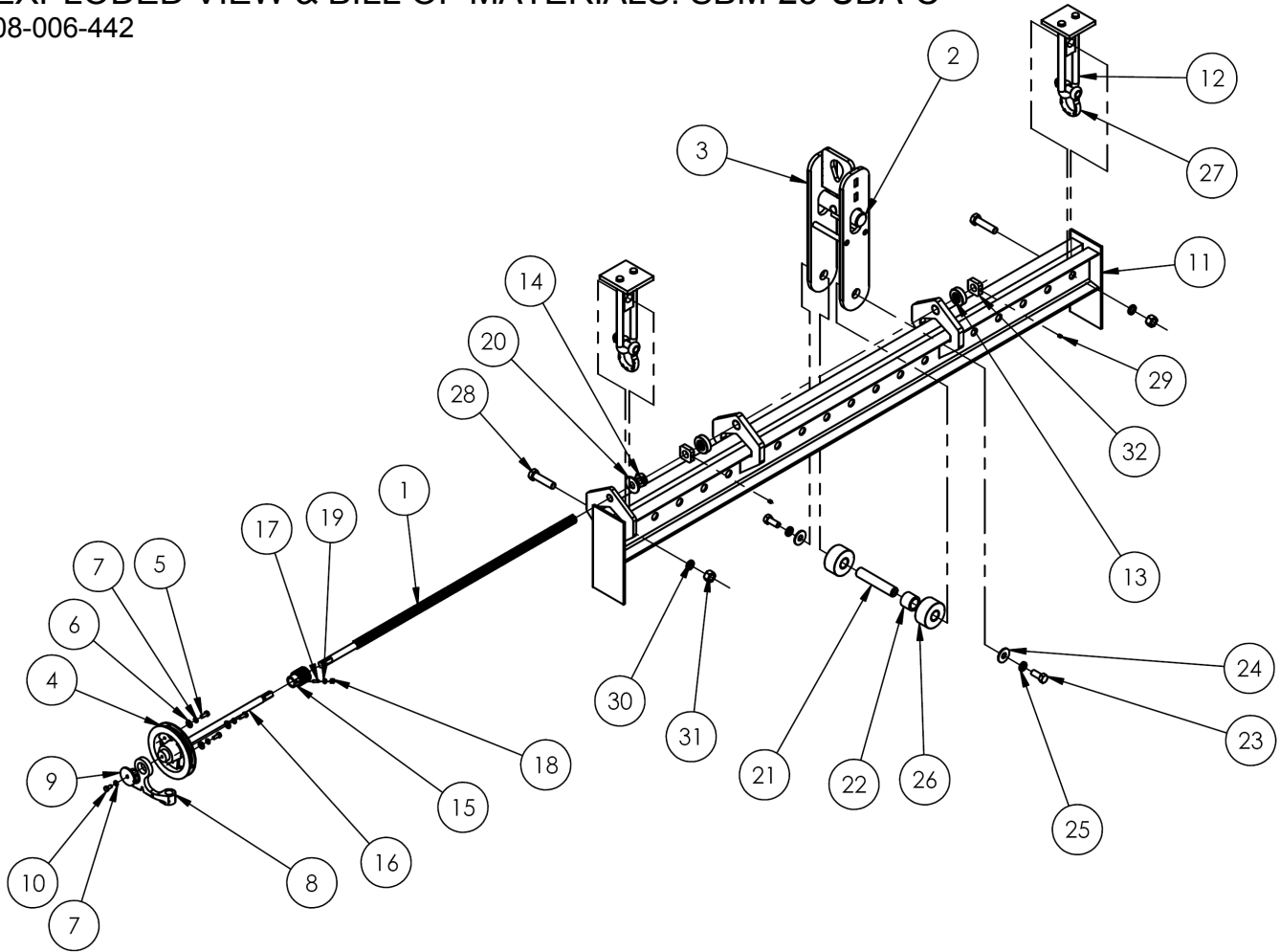
### STANDARD FEATURES

Overall length: 82 1/2" (210.0cm)  
 Usable length: 72" (182.9cm)  
 Overall width: 8" (20.3cm)  
 Overall height: 23 5/8" (60.0cm)

Capacity: 4,000 lb. (1,818.2kg)  
 Middle lift bracket adjustable over 27" (68.6cm) range  
 Lateral lifting bales adjustable in 4" (10.2cm) increments  
 Weight: 193 lb. (87.7kg)

# EXPLODED VIEW & BILL OF MATERIALS: SBM-25-UBA-C

08-006-442

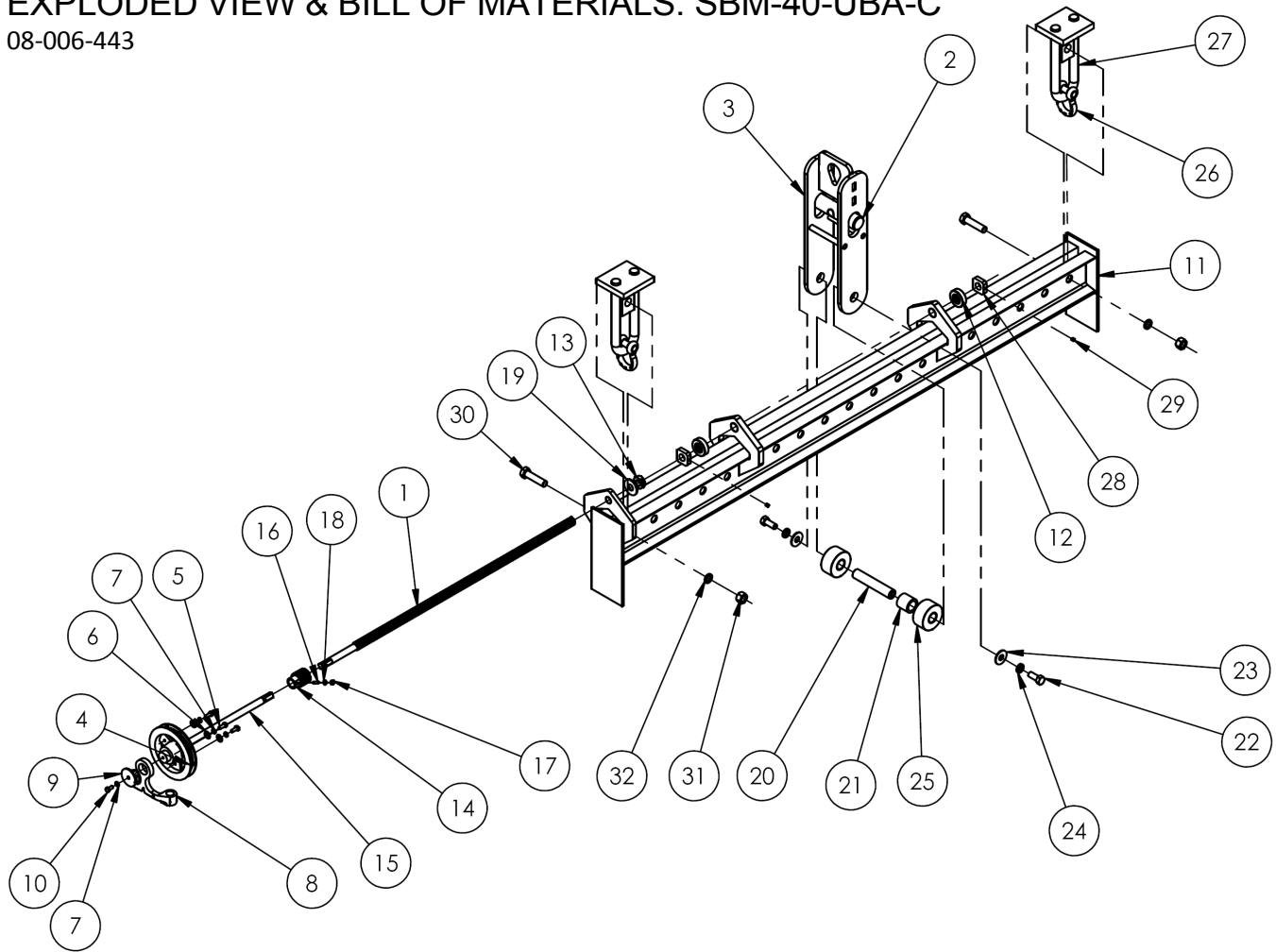


Item	Part no.	Description	Qty.	Item	Part no.	Description	Qty.
*1	45-026-001	Shaft, screw	1	*17	25334	Socket set screw, 1/4"-20x1"	1
*2	08-120-001	Nut, drive	1	*18	36102	Hex nut, gr. A, zinc plated, 1/4"-20	1
*3	08-516-004	Weldment, bracket, attachment	1	*19	33618	Medium split lock washer, 1/4"	1
*4	09-042-018	Rotating chain wheel	1	*20	33018	Flat washer, USS, zinc plated, 3/4"	1
*5	38615	Hex bolt, metric class 8.8, zinc plated, M8-1.25x20mm	3	*21	08-112-024	Pin, roller	1
*6	33006	Flat washer. Zinc plated, USS, 5/16"	3	*22	08-113-033	Spacer, roller	1
*7	33620	Lock washer, medium split, 5/16"	4	*23	13309	Bolt, HHCS #5, zinc plated, 5/8"-11x1 1/2"	2
*8	09-042-019	Chain guide	1	*24	33015	USS flat washer, plain finish, 5/8"x1.750	2
*9	09-014-116	Assembly, frame, round, pull chain	1	*25	33630	Lock washer, medium split, zinc finish, 5/8"	2
*10	38614	Hex bolt, metric class 8.8, zinc finish, M8-1.25x16mm	1	*26	05-527-300	Assembly, roller	2
*11	08-514-360	Weldment, frame, channel	1	*27	99-145-019	Shackle, 3-ton capacity	2
*12	08-514-053	Weldment, frame, lower bail ("Shackle assembly")	2	*28	13365	Bolt, z-plated, #5, 3/4"-10UNC x 3"	2
*13	28-111-004	Bearing, sleeve, pivot spacer	2	*29	25437	Screw, set, 5/16"-18UNC x 3/8"	2
*14	34308	Split shaft collar, low carbon steel, black oxide finish, 3/4"	3	*30	33632	Lock washer, 3/4"	2
*15	08-645-010	Weldment, coupling, shaft	1	*31	36115	Hex nut, 3/4"-10UNC	2
*16	08-526-001	Weldment, drive shaft	1	*32	08-122-001	Nut, lock, retainer	2

\*Component of bale assembly

# EXPLODED VIEW & BILL OF MATERIALS: SBM-40-UBA-C

08-006-443



Item	Part no.	Description	Qty.	Item	Part no.	Description	Qty.
*1	45-026-001	Shaft, screw	1	*17	36102	Hex nut, gr. A, zinc plated, 1/4"-20	1
*2	08-120-001	Nut, drive	1	*18	33618	Medium split lock washer, 1/4"	1
*3	08-516-005	Weldment, bracket, attachment	1	*19	33018	Flat washer, USS, zinc plated, 3/4"	1
*4	09-042-018	Rotating chain wheel	1	*20	08-112-025	Pin, roller	1
*5	38615	Hex bolt, metric class 8.8, zinc plated, M8-1.25x20mm	3	*21	08-113-033	Spacer, roller	1
*6	33006	Flat washer. Zinc plated, USS, 5/16"	3	*22	13309	Bolt, HHCS #5, zinc plated, 5/8"-11x1 1/2"	2
*7	33620	Lock washer, medium split, 5/16"	4	*23	33015	USS flat washer, plain finish, 5/8"x1.750	2
*8	09-042-019	Chain guide	1	*24	33630	Lock washer, medium split, zinc finish, 5/8"	2
*9	09-014-116	Assembly, frame, round, pull chain	1	*25	05-527-300	Assembly, roller	2
*10	38614	Hex bolt, metric class 8.8, zinc finish, M8-1.25x16mm	1	*26	99-145-019	Shackle, 3-ton capacity	2
*11	08-514-363	Weldment, frame, channel	1	*27	08-514-054	Weldment, frame, lower bale ("Shackle assembly")	2
*12	28-111-004	Bearing, sleeve, pivot spacer	2	*28	08-122-001	Nut, lock, retainer	2
*13	34308	Split shaft collar, low carbon steel, black oxide finish, 3/4"	3	*29	25437	Screw, set, 5/16"-18UNC x 3/8"	2
*14	08-645-010	Weldment, coupling, shaft	1	*30	13365	Bolt, z-plated, #5, 3/4"-10UNC x 3"	2
*15	08-526-001	Weldment, drive shaft	1	*31	36115	Hex nut, 3/4"-10UNC	2
*16	25334	Socket set screw, 1/4"-20x1"	1	*32	33632	Lock washer, 3/4"	2

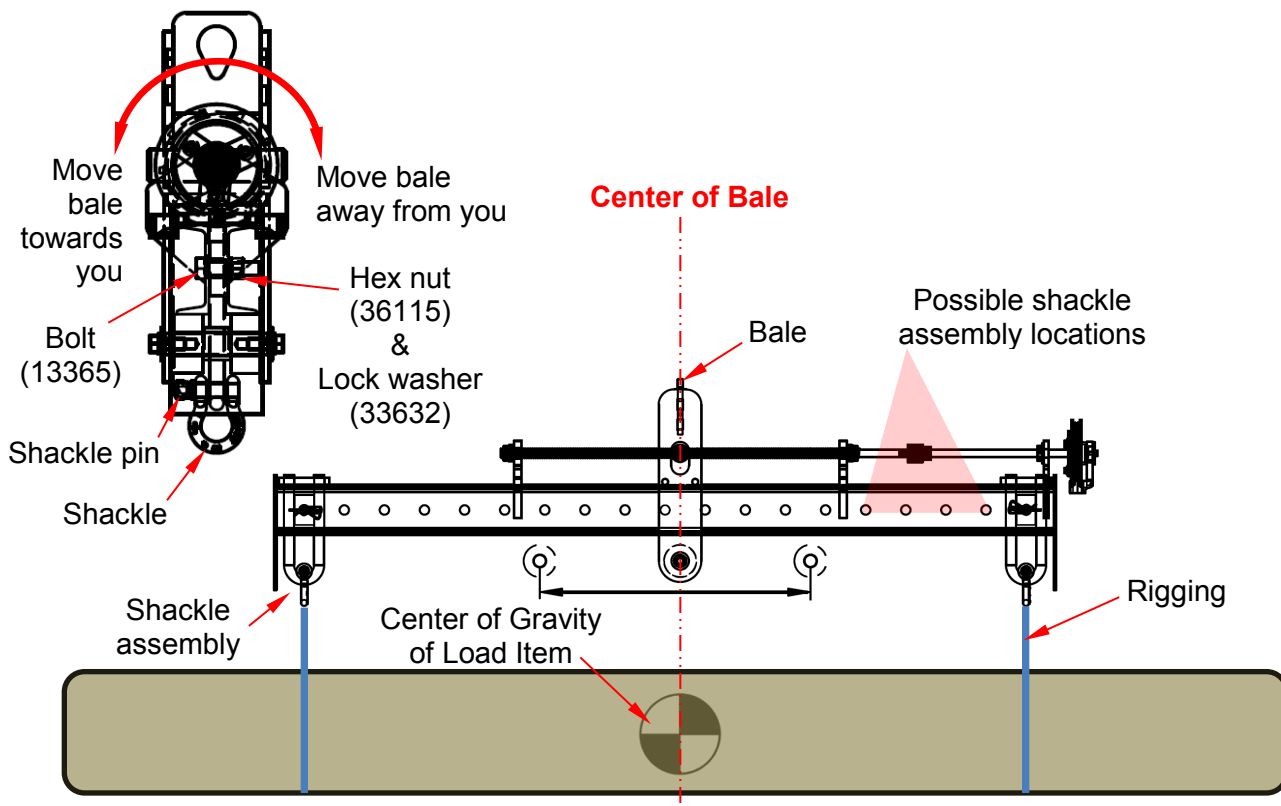
\*Component of bale assembly

## USING THE LIFTER

**⚠ WARNING** The capacity of the hoist, crane, and rigging should equal or exceed the capacity of the spreader beam. **DO NOT** exceed the capacity of the lifter, crane, rigging, or the hoist, whichever is smallest.

Load the lifter by applying the following steps:

1. Tighten both shackle pins.
2. Attach the hoist hook to the bale of the spreader beam. Make sure that the hoist is centered above the bale.
3. Move the beam into position above the load item. Center the bale above the center of gravity of the load item.
4. Attach rigging to the load item.
5. Adjust the positions of the load shackles. Rigging should hang vertically once attached to the shackles. To change the position of a shackle, first remove the hex nut (36115) and lock washer (33632) from the end of the bolt (13365) and withdraw the bolt. Reposition the shackle assembly. Insert the bolt through the selected holes in the beam and through the hole in the shackle assembly. Reapply the washer and nut. Generally, the shackles should be attached in the same locations on either side of the bale. If the load item and beam are not level when the **test lift** is performed (step 7 below), the center of gravity of the load item is on the low side of the item rather than being centered below the bale. Relocate the shackles and rigging to position the center of gravity of the load directly below the center of the bale.
6. Attach the rigging to both load shackles.
7. Perform a test lift. Raise the load just a few inches above the ground. The load and beam should balance, i.e. be horizontally level. If one end of the load item is lower than the other, return the load to the ground. Reposition shackle assemblies and rigging as necessary to balance the load item. If the load cannot be balanced just by adjusting the positions of the shackles and rigging, the location of the bale can be adjusted using the pull chain. Pull the right side of the chain to move the bale towards you (to the right in the diagram). Pull the left side of the chain to move the bale away from you (to the left in the diagram). Carefully move the bale assembly in the direction of the low side of the load item. Stop moving the bale when the load balances (horizontally level).



## INSPECTIONS & MAINTENANCE

Inspection procedures are included in the most current revision of ASME B30.20. As stated above in the [NATIONAL STANDARDS](#) section, Vestil recommends that you acquire a copy of the most recent revision of this standard. Apply all use and maintenance/care instructions in the Standard. Vestil also recommends that you contact your local occupational safety and health authority to determine if any laws, regulations, codes, ordinances, etc. apply inspection requirements to below-the-hook lifters.

Inspections and repairs should only be performed by qualified persons. Compare the results of each inspection to the [RECORD OF SATISFACTORY CONDITION](#) (the "RECORD"). Do not use the lifter unless all parts are in satisfactory condition. Replace parts that are not in satisfactory condition before using the lifter again. **DON'T GUESS! If you have any questions about the condition of your lifter, contact the [TECHNICAL SERVICE](#) department.** The phone number is provided on the cover page of this manual. Never make temporary repairs of damaged or missing parts. Only use manufacturer-approved replacement parts. Deformities, cracks, and severe wear of the lifting arm or main body requires immediate replacement of the entire unit.

### **Every lift**

The operator of this lifter must inspect the lifter every time before it is used. Look for dirt or other surface debris. Clean the surfaces.

### **Monthly Inspections**

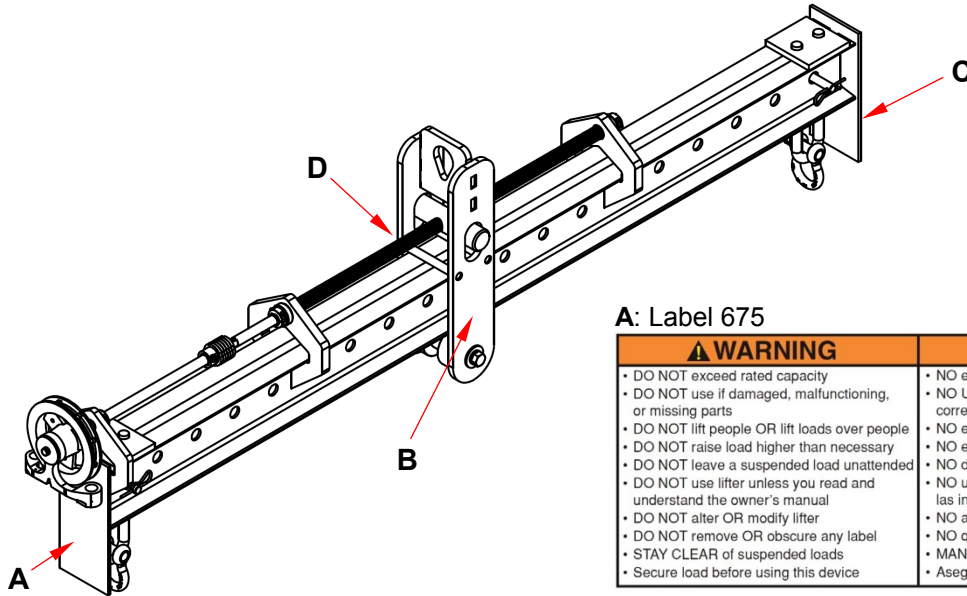
At least once per month a qualified person must perform the following inspections. Written reports should be prepared for every monthly inspection including inspections following [LOAD TESTS](#).

1. Spreader frame: Examine each pin hole and the surrounding metal for elongations, cracks, rusting and corrosion. Pin holes should be smooth and circular. The frame should be square and rigid. There should be no cracks, warps, regions weakened by severe rusting or corrosion, etc. Examine all welds for damage.
2. Fasteners: Inspect all bolts, washers, and nuts. Confirm that bolts are straight and without cracks, warps, etc. If you have to remove a lock nut, it must be replaced with a new, unused lock nut.
3. Load shackles and shackle assemblies: Examine each shackle and shackle assembly for damage including significant wear, warping, cracks, or deformation. Measure the throat opening of each shackle. Compare it to the measurements in the [RECORD](#). The throat opening of each shackle should not be 15 percent or more in excess of normal throat opening or be twisted more than 10° from the plane of the unbent shackle.
4. Bale assembly: Examine all components of the bale assembly for damage, including significant wear. In the exploded views on pages 5 & 6, assembly components are identified with asterisks (\*). Move the bale assembly in both directions through its full range. Confirm that it moves properly without sticking/binding. The pull chain should seat into a groove in the chain wheel. Lightly oil the screw threads if bale movement is rough. Check the bale opening (connection point for hoist hook). Make sure that the metal around the opening is not cracked, warped, thinned, or rusted/corroded. Examine all fasteners (bolts, nuts, washers, pins).
5. Labeling: Labels should be readable and attached in the locations shown in the [LABELING DIAGRAM](#). If a label(s) is unreadable or missing, contact Vestil to order a replacement.
6. Welds: Confirm that all welds are intact.



# LABELING DIAGRAM

The unit should be labeled as shown in the diagram. However, label content and location are subject to change so your product might not be labeled exactly as shown. Replace all labels that are damaged, missing, or not easily readable (e.g. faded). To order replacement labels, contact the technical service and parts department online at [http://www.vestilmfg.com/parts\\_info.htm](http://www.vestilmfg.com/parts_info.htm). Alternatively, you may request replacement parts and/or service by calling (260) 665-7586 and asking the operator to connect you to the Parts Department.



A: Label 675

⚠ WARNING	⚠ ADVERTENCIA
<ul style="list-style-type: none"> <li>• DO NOT exceed rated capacity</li> <li>• DO NOT use if damaged, malfunctioning, or missing parts</li> <li>• DO NOT lift people OR lift loads over people</li> <li>• DO NOT raise load higher than necessary</li> <li>• DO NOT leave a suspended load unattended</li> <li>• DO NOT use lifter unless you read and understand the owner's manual</li> <li>• DO NOT alter OR modify lifter</li> <li>• DO NOT remove OR obscure any label</li> <li>• STAY CLEAR of suspended loads</li> <li>• Secure load before using this device</li> </ul>	<ul style="list-style-type: none"> <li>• NO exceda la capacidad tasada</li> <li>• NO USE is las partes estan dañadas, no funcionan correctamente o faltan partes.</li> <li>• NO eieve al personal o eieve cargas sobre el personal</li> <li>• NO eieve la carga mas alto de lo necesario</li> <li>• NO deje desatendida una carga que este suspendida</li> <li>• NO use el elevador a no ser que haya leído y entendido las instrucciones del manual del propietario</li> <li>• NO altere o modifique el elevador</li> <li>• NO quite u oscurezca ninguna etiqueta</li> <li>• MANTENGASE alejado de las cargas suspendidas</li> <li>• Asegure la carga antes de usar este dispositivo</li> </ul>

B: Label 202



C: Label 1016

⚠ WARNING
Improper use might result in serious personal injuries: <ol style="list-style-type: none"> <li>1. <b>DO NOT</b> side load! Bales designed only for straight line pulls.</li> <li>2. Bale pins/bolts must be in place before attaching load.</li> </ol>
⚠ ADVERTENCIA
El uso indebido podría causar lesiones personales graves: <ol style="list-style-type: none"> <li>1. <b>NO</b> voltear de lado, pacas diseñado solamente para poner en línea recta.</li> <li>2. Los pin de las pacas / pernos deben estar en su lugar antes de colocar la carga.</li> </ol>

D: Label 1000

Model No. _____	Serial No. _____
No. Modelo _____	No. Serie _____
Capacity _____ lbs.	Lifter Weight _____ lbs.
Capacidad _____ kgs.	Peso del Elevador _____ kgs.
BHT-1 Design Category: B	BHT-1 Service Category: 1
BHT-1 Categoría de Diseño B	BHT-1 Categoría de Servicio: 1
1000	
Read Owners Manual for product safety warnings	
Lea Manual de Proprietarios para advertencias de seguridad de producto	

## LIMITED WARRANTY

Vestil Manufacturing Corporation (“Vestil”) warrants this product to be free of defects in material and workmanship during the warranty period. Our warranty obligation is to provide a replacement for a defective, original part covered by the warranty after we receive a proper request from the Warrantee (you) for warranty service.

### Who may request service?

Only a warrantee may request service. You are a warrantee if you purchased the product from Vestil or from an authorized distributor AND Vestil has been fully paid.

### Definition of “original part”?

An original part is a part used to make the product as shipped to the Warrantee.

### What is a “proper request”?

A request for warranty service is proper if Vestil receives: 1) a photocopy of the Customer Invoice that displays the shipping date; AND 2) a written request for warranty service including your name and phone number. Send requests by one of the following methods:

US Mail	Fax	Email
Vestil Manufacturing Corporation 2999 North Wayne Street, PO Box 507 Angola, IN 46703	(260) 665-1339 Phone (260) 665-7586	<a href="mailto:info@vestil.com">info@vestil.com</a> Enter “Warranty service request” in subject field.

In the written request, list the parts believed to be defective and include the address where replacements should be delivered. After Vestil receives your request for warranty service, an authorized representative will contact you to determine whether your claim is covered by the warranty. Before providing warranty service, Vestil will require you to send the entire product, or just the defective part (or parts), to its facility in Angola, IN.

### What is covered under the warranty?

The warranty covers defects in the following original, dynamic parts: motors, hydraulic pumps, motor controllers, and cylinders. It also covers defects in original parts that wear under normal usage conditions (“wearing parts”), such as bearings, hoses, wheels, seals, brushes, and batteries.

### How long is the warranty period?

The warranty period for original dynamic components is 90 days. For wearing parts, the warranty period is 90 days. Both warranty periods begin on the date Vestil ships the product to the Warrantee. If the product was purchased from an authorized distributor, the periods begin when the distributor ships the product. Vestil may, at its sole discretion, extend a warranty period for products shipped from authorized distributors by up to 30 days to account for shipping time.

### If a defective part is covered by the warranty, what will Vestil do to correct the problem?

Vestil will provide an appropriate replacement for any *covered* part. An authorized representative of Vestil will contact you to discuss your claim.

### What is not covered by the warranty?

The Warrantee (you) is responsible for paying labor costs and freight costs to return the product to Vestil for warranty service.

### Events that automatically void this Limited Warranty.

- Misuse;
- Negligent assembly, installation, operation or repair;
- Installation/use in corrosive environments;
- Inadequate or improper maintenance;
- Damage sustained during shipping;
- Collisions or other accidents that damage the product;
- Unauthorized modifications: Do not modify the product IN ANY WAY without first receiving written authorization from Vestil.

### Do any other warranties apply to the product?

Vestil Manufacturing Corp. makes no other express warranties. All implied warranties are disclaimed to the extent allowed by law. Any implied warranty not disclaimed is limited in scope to the terms of this Limited Warranty. Vestil makes no warranty or representation that this product complies with any state or local design, performance, or safety code or standard. Noncompliance with any such code or standard is not a defect in material or workmanship.

