



## VESTIL MANUFACTURING Co.

2999 North Wayne Street, P.O. Box 507, Angola, IN 46703

Telephone: (260) 665-7586 -or- Toll Free (800) 348-0868

Fax: (260) 665-1339

[www.vestil.com](http://www.vestil.com) e-mail: [info@vestil.com](mailto:info@vestil.com)

# INSTRUCTION MANUAL SCALE-LP-44-5K



### **Receiving instructions:**

After delivery, **IMMEDIATELY** remove the packaging from the product in a manner that preserves the packaging and maintains the orientation of the product in the packaging; then inspect the product closely to determine whether it sustained damage during transport. **If damage is discovered during the inspection, immediately record a complete description of the damage on the bill of lading.** If the product is undamaged, discard the packaging.

### **NOTES:**

1) Compliance with laws, regulations, codes, and non-voluntary standards enforced in the location where the product is *used* is exclusively the responsibility of the owner/end-user.

2) VESTIL is **not liable** for any injury or property damage that occurs as a consequence of failing to apply either: a) the instructions in this manual; or b) information provided on labels affixed to the product. Neither is Vestil responsible for *any* consequential damages sustained as a result of failing to exercise sound judgment while assembling, installing, using or maintaining this product.

## Step 1

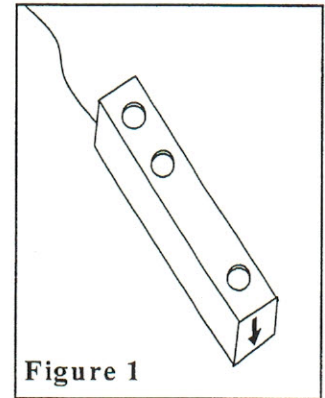
Inspect surface area and installation site. Ensure surface is flat, level and strong enough to support the scale and its rated capacity. Recommended- Six to eight inch re-enforced concrete base is best for this application.

Routing of cables, installation of conduit, placement of junction box and location of indicator should be planned out prior to installing scale.

## Step 2

Install load cells into scale with arrows on the front of the load cell pointing down (Figure 1).

Proper placement of load cells is shown in diagram S-4. Each load cell is numbered according to its respective position in the scale platform. (The number for each load cell is located on the end of each the cable).



Torque load cell bolts to 115 lbs.

Leave cables coiled for each load cell and duct tape them to the top of the scale to protect them during placement of the modules.

## Step 3

Set scale **Section A** into place. Install foot assemblies into four load cells. See diagram S-2 and S-3. Level and adjust height of scale by using  $\frac{3}{4}$ " flat washers.

**Tip:** Use one of the ramps to gauge proper height.

The top of the scale and the ramps should be the same height. Foot assemblies should sit firmly on the ground with no rocking in the platform.

## Step 4

Run load cell cables through eyes under lip of top plate and connect the junction box. See diagram S-1 and S-4. Junction box is usually located under ramp between gussets.

## Step 5

Position ramps around scale and leave a  $\frac{3}{8}$ " gap between ramps and scale. Adjust foot assemblies to fit between gussets on ramps ( Note: Holes are off-set to allow for this). See diagram S-1. Once all adjustments are made to foot assemblies, drill  $\frac{1}{2}$ " holes in concrete with hammer drill and install anchors in foot assemblies. Apply never seize to anchors.

Position all ramps in place. Drill holes with hammer drill and anchor ramps with  $\frac{1}{2}$ " anchors. Apply never seize to anchors.

Diagram S-1

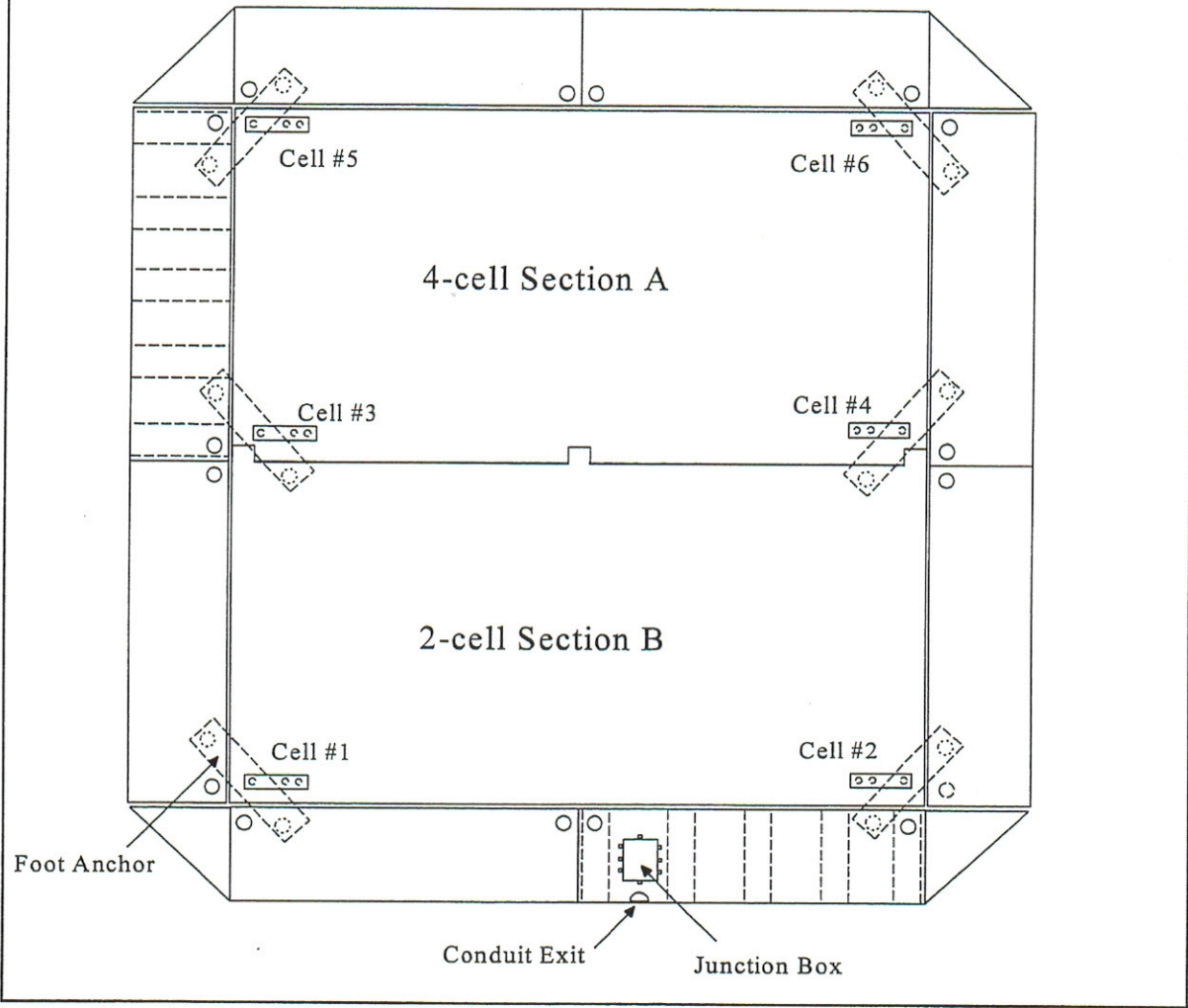
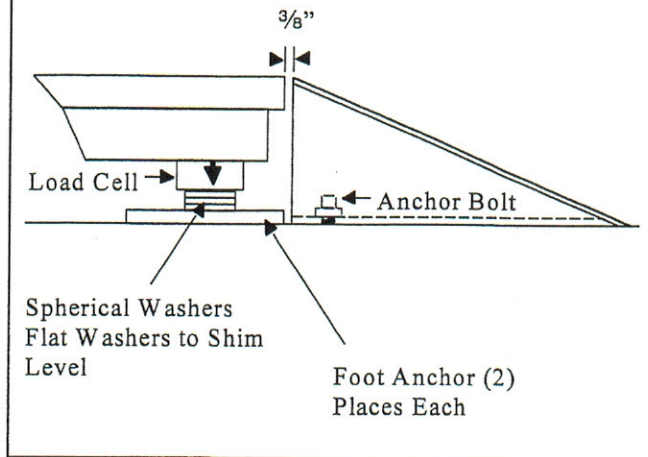


Diagram S-2



Standard Anchors  $\frac{1}{2}$ " x 3"-Molly Min.  
Into Concrete.  
Shim Washers Are  $\frac{3}{4}$ " SAE Washers,  
Quantity may vary with leveling surface.

Diagram S-3

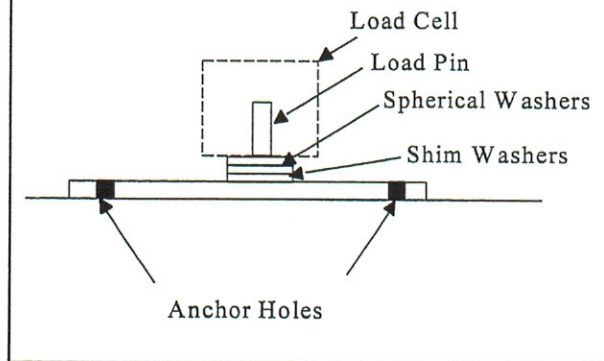
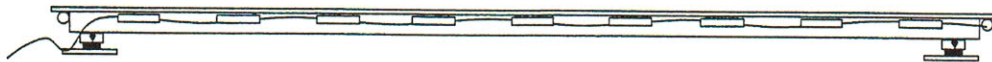
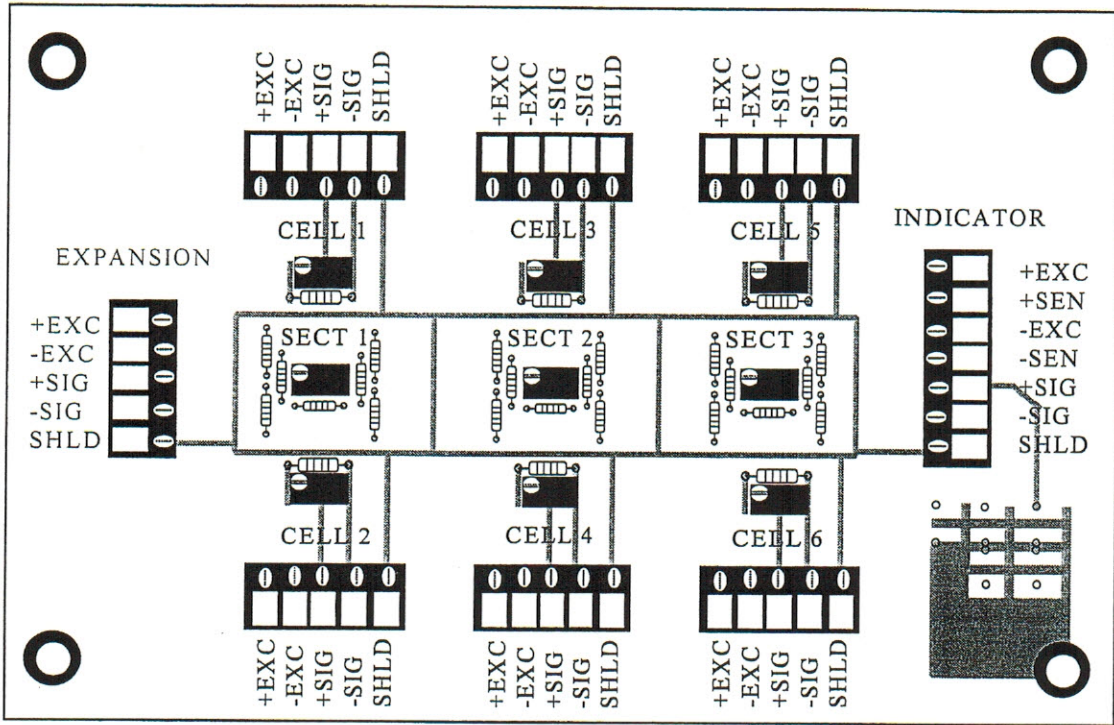


Diagram S-4



Load Cell Cables run under top plate through eyes along sides of scale.

Diagram S-5



+ Exc	Red
- Exc	Black
+ Sig	Green
- Sig	White

## LIMITED WARRANTY

Vestil Manufacturing Corporation (“Vestil”) warrants this product to be free of defects in material and workmanship during the warranty period. *Our warranty obligation is to provide a replacement for a defective original part if the part is covered by the warranty, after we receive a proper request from the warrantee (you) for warranty service.*

### Who may request service?

Only a warrantee may request service. *You are a warrantee if* you purchased the product from Vestil or from an authorized distributor AND Vestil has been fully paid.

### What is an “original part”?

An original part is a part used to make the product as shipped to the warrantee.

### What is a “proper request”?

A request for warranty service is proper if Vestil receives: 1) a photocopy of the Customer Invoice that displays the shipping date; AND 2) a written request for warranty service including your name and phone number. Send requests by any of the following methods:

<u>Mail</u>	<u>Fax</u>	<u>Email</u>
Vestil Manufacturing Co.	(260) 665-1339	info@vestil.com
2999 North Wayne Street, PO Box 507	<u>Phone</u>	
Angola, IN 46703	(260) 665-7586	

In the written request, list the parts believed to be defective and include the address where replacements should be delivered.

### What is covered under the warranty?

After Vestil receives your request for warranty service, an authorized representative will contact you to determine whether your claim is covered by the warranty. Before providing warranty service, Vestil may require you to send the entire product, or just the defective part or parts, to its facility in Angola, IN. The warranty covers defects in the following *original* dynamic components: motors, hydraulic pumps, electronic controllers, switches and cylinders. It also covers defects in *original* parts that wear under normal usage conditions (“wearing parts”), such as bearings, hoses, wheels, seals, brushes, and batteries.

### How long is the warranty period?

The warranty period for original components is 3 years. For wearing parts, the warranty period is 90 days. The warranty periods begin on the date when Vestil ships the product to the warrantee. If the product was purchased from an authorized distributor, the periods begin when the distributor ships the product. Vestil may, at its sole discretion, extend the warranty periods for products shipped from authorized distributors by *up to* 30 days to account for shipping time.

### If a defective part is covered by the warranty, what will Vestil do to correct the problem?

Vestil will provide an appropriate replacement for any *covered* part. An authorized representative of Vestil will contact you to discuss your claim.

### What is not covered by the warranty?

1. Labor;
2. Freight;
3. Occurrence of any of the following, which automatically voids the warranty:
  - Product misuse;
  - Negligent operation or repair;
  - Corrosion or use in corrosive environments;
  - Inadequate or improper maintenance;
  - Damage sustained during shipping;
  - Collisions or other incidental contacts causing damage to the product;
  - Unauthorized modifications: DO NOT modify the product IN ANY WAY without first receiving written authorization from Vestil. Modification(s) might make the product unsafe to use or might cause excessive and/or abnormal wear.

### Do any other warranties apply to the product?

Vestil Manufacturing Corp. makes no other express warranties. All implied warranties are disclaimed to the extent allowed by law. Any implied warranty not disclaimed is limited in scope to the terms of this Limited Warranty.

