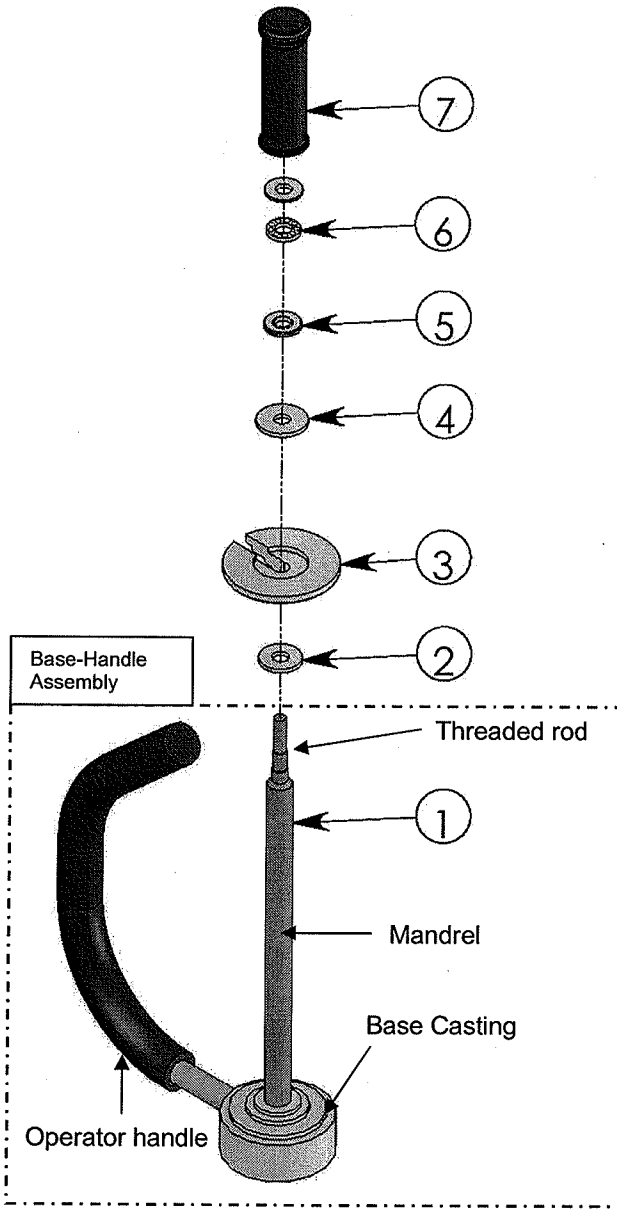


**FIG. 1: Exploded Parts Diagram**



ITEM NO.	DESCRIPTION	QTY.
1	BASE HANDLE ASSEMBLY	1
2	1 1/4" WASHER	1
3	UPPER SPOOL	1
4	1 1/2" WASHER	1
5	RACE THRUSTER	2
6	BALL BEARING RACE	1
7	TENSIONING GRIP	1

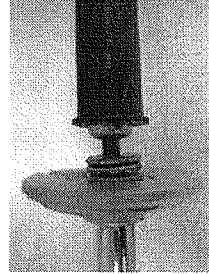
**Specifications:**

Model	Adjustable Range	Width
SW-HAND-BG	12-20in.	10in.

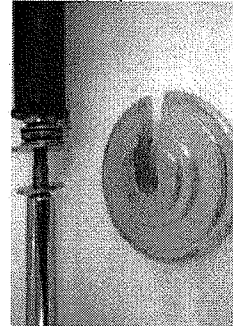
**Instructions**

To load stretch wrap:

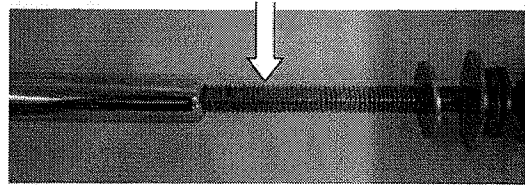
1. Loosen the tensioning grip by turning it counter-clockwise.



2. Remove the top spool casting.



3. Adjust the length of the threaded rod to accommodate the dimensions of a particular roll of stretch wrap. Turn the rod counterclockwise to add length; to shorten the rod turn wind it clockwise into the mandrel.



4. Insert the free end of the threaded rod into the tube that the stretch wrap is wound around.

5. Install the top spool casting. When the threaded rod is properly adjusted, the top spool will remain ~3-5mm above the top of the stretch wrap tube. Readjust the threaded rod if necessary, and then reconnect the tensioning grip.

