

WL-100 Wheel Kit (WL-WK):

Units equipped with a wheel kit include 4 casters (2 swivel-type and 2 rigid) and a detachable handle.

A total of 8 “bulldog” couplers are welded to elements of the frame. These couplers provide the means for attaching the casters to the table.

- Four bulldogs (see items 1-4 in the diagram below) are attached to the frame in locations where the casters cannot contact the ground. The casters must be secured to these bulldogs whenever the table is in use.

⚠ WARNING DO NOT apply a load to the tabletop unless the casters are in the storage bulldogs.

- The other bulldogs (items 5-8) are attached to the frame in locations where the casters will contact the ground when the table is lowered (see FIG. 3 on p. 2).
- Casters are pinned to the bulldogs with $\frac{3}{8}$ in. x $4\frac{5}{8}$ in. clevis pins and hairpin clips. To secure a caster in a particular bulldog, remove the hairpin clip from the end of the clevis pin and then remove the clevis pin from the bulldog. Place the mounting bracket of the caster within the bulldog; then reinsert the clevis pin and secure it in place by inserting a hairpin clip through the hole in the end of the clevis.

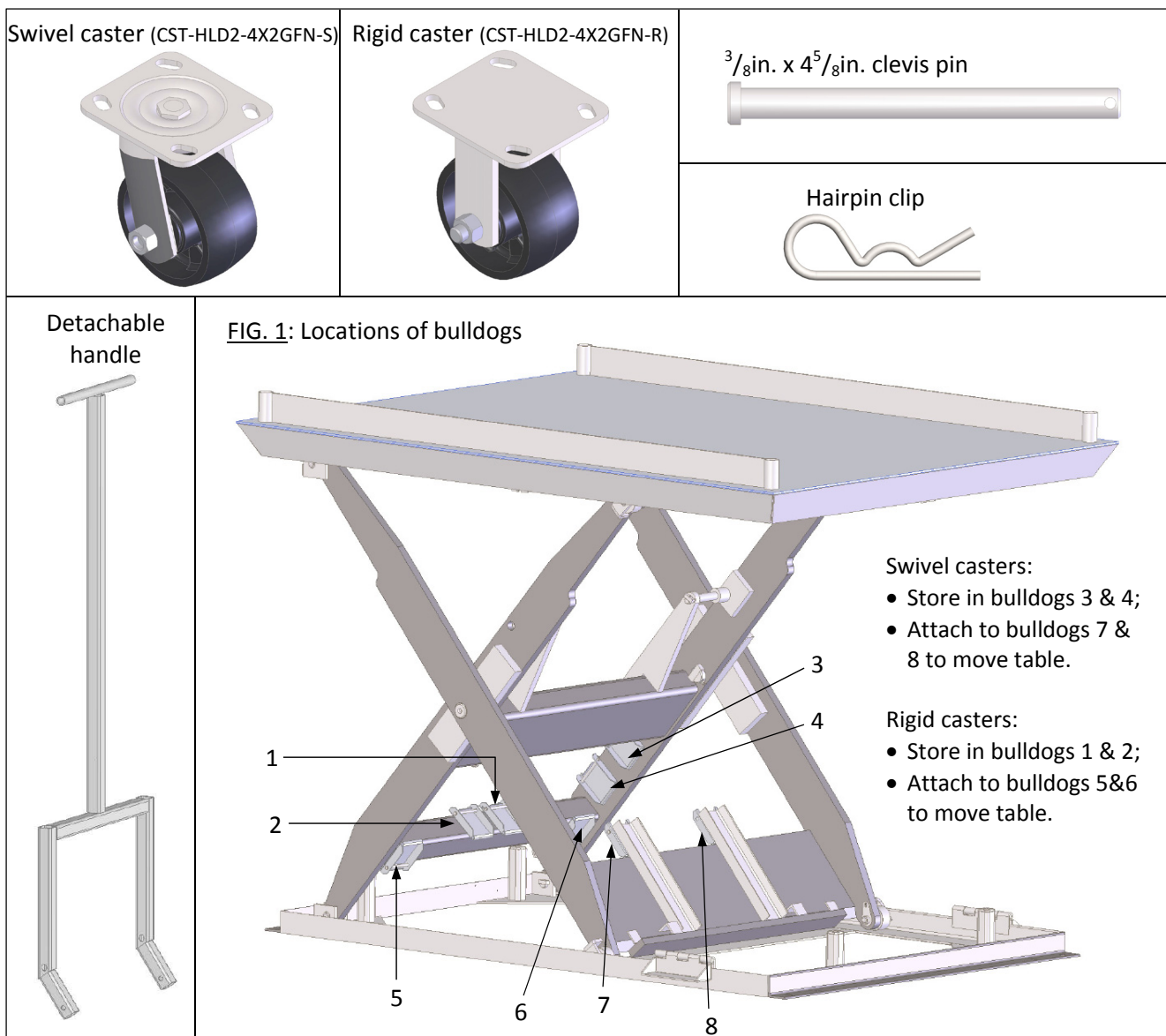


FIG. 2: Casters stored in bulldogs 1-4. Attach handle to receivers

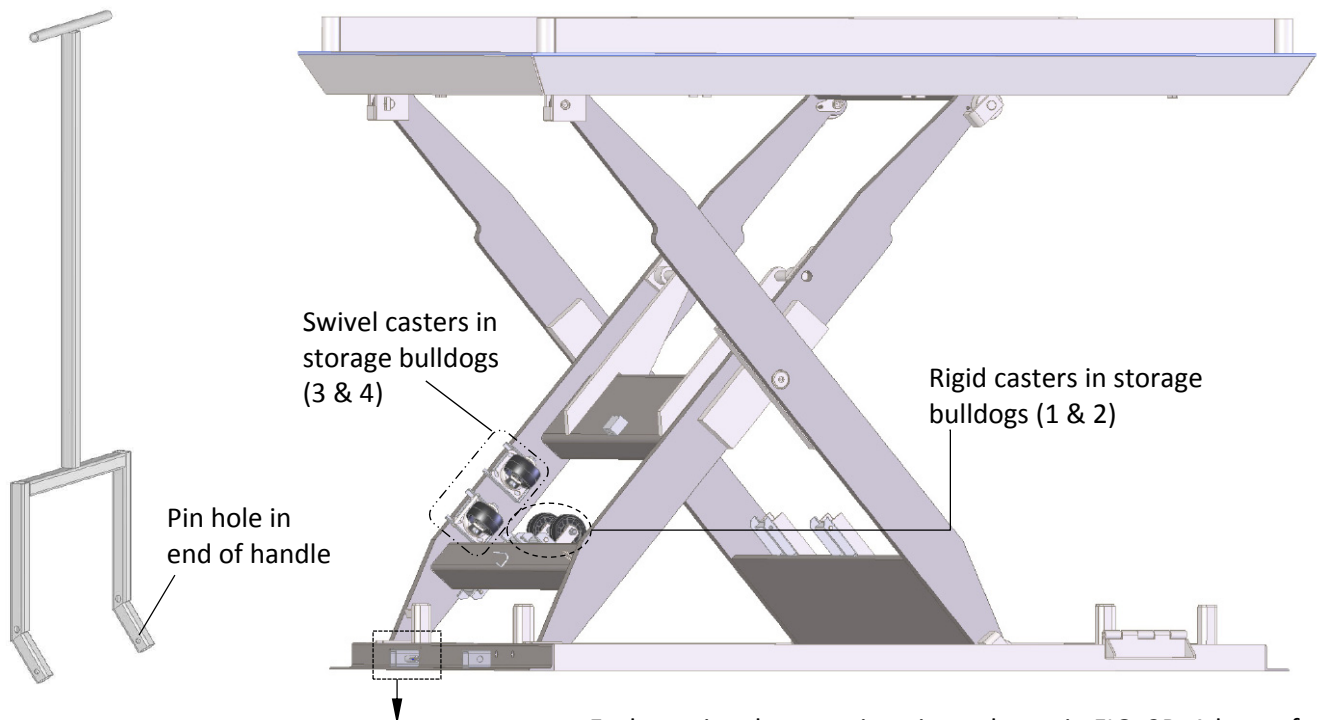
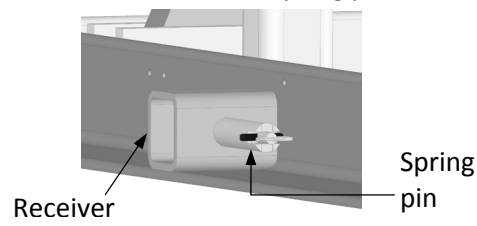


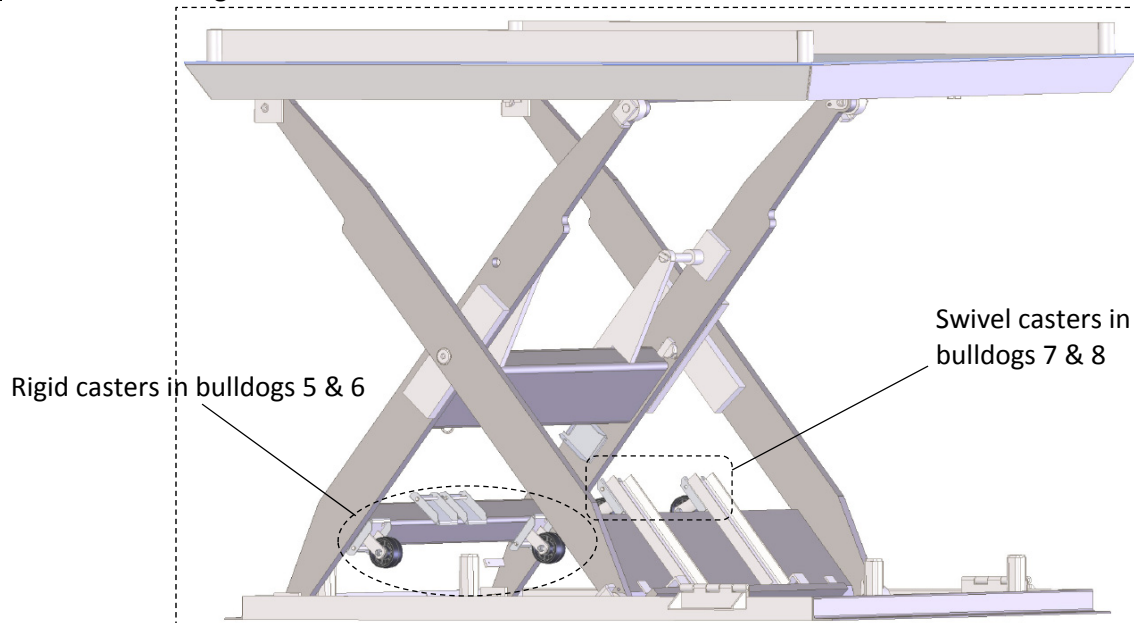
FIG. 2B: Receiver and spring pin



Each receiver has a spring pin as shown in FIG. 2B. A loop of cable connects the pins. One side of the loop passes through a small ring. To retract the spring pins, pull the ring away from the table.

To install the handle, pull the ring to retract the spring pins; insert the ends of the handle into the receivers; then release the pins. Align the pin holes in the ends of the handle with the spring pins to lock the handle into place.

FIG. 3: Casters in bulldogs 5-8.



NOTE: DO NOT move casters between bulldogs unless the maintenance props are deployed. The tabletop must be securely supported by the props.