

**VESTIL MANUFACTURING CORP.**

2999 North Wayne Street, P.O. Box 507, Angola, IN 46703

Telephone: (260) 665-7586 -or- Toll Free (800) 348-0868

Fax: (260) 665-1339

www.vestilmfg.com e-mail: sales@vestil.com

WP-400 Series Electric Work Platforms

Instruction Manual

**Receiving Instructions:**

After delivery, remove the packaging from the product. Inspect the product closely to determine whether it sustained damage during transport. If damage is discovered, record a complete description of the damage on the bill of lading. If the product is undamaged, discard the packaging.

NOTES:

- 1) Compliance with laws, regulations, codes, and non-voluntary standards enforced in the location where the product is *used* is exclusively the responsibility of the owner/end-user.
- 2) VESTIL is not liable for any injury or property damage that occurs as a consequence of failing to apply either: a) the instructions in this manual; or b) information provided on labels affixed to the product.

Table of Contents

Signal Words.....	2
Hazards of Improper Use.....	2
Specifications.....	3
FIG. 1: WP-400-AC exploded parts diagram & bill of materials.....	4
FIG. 2: WP-400-DC exploded parts diagram & bill of materials.....	4
Operation.....	5
Battery charger operation.....	5
Maintenance.....	6
Labeling diagram.....	6
Limited warranty.....	7

Signal Words:

This manual uses SIGNAL WORDS to call attention to uses of this product that are likely to result in personal injuries or property damage. The signal words used in this manual appear below along with their definitions.

WARNING Identifies a hazardous situation which, if not avoided, **COULD** result in **DEATH** or **SERIOUS INJURY**.

NOTICE Identifies practices likely to result in product/property damage, such as operation that might damage the product or other property.

Hazards of Improper Use:

Study the entire manual before using this device. A copy of the manual should be available to users at all times. Read the manual whenever necessary to refresh your understanding of operation, inspection, and maintenance procedures.

WARNING Serious personal injuries might result from improper or careless use of this machine.

- Before installing, servicing, or putting the device into service, read and understand all of the instructions in this manual. A copy of the manual should be available to users of this device at all times
- DO NOT modify the product in any way UNLESS you first obtain written approval from Vestil. Unauthorized modifications might make the lift unsafe to use and automatically void the Limited Warranty (see p. 7).
- DO NOT exceed the capacity of the unit (see "Specifications" table on p. 3; and Label 287 on product).
- DO NOT use a damaged platform. Inspect the unit according to the inspection instructions on p. 5. DO NOT use the platform unless it passes every element of the inspection.
- The platform is intended for single occupancy. No more than 1 person should use this platform at a time.

Specifications:

Dimensions and other specifications for each model appear in the table and diagrams below.

Model	Platform dimensions	Platform lowered height	Platform raised height	Uniform capacity	Operation	Net Weight
WP-400-AC	36" (W) x 24" (L) 91.4cm x 61cm	2 ³ / ₄ " 7.0cm	14 ⁵ / ₈ " 37.1cm	400 lb. 181.8 kg	115V AC electrical power	276 lb. 126 kg
WP-400-DC	36" (W) x 24" (L) 91.4cm x 61cm	2 ³ / ₄ " 7.0cm	14 ⁵ / ₈ " 37.1cm	400 lb. 181.8 kg	12V DC electrical power	236 lb. 108 kg

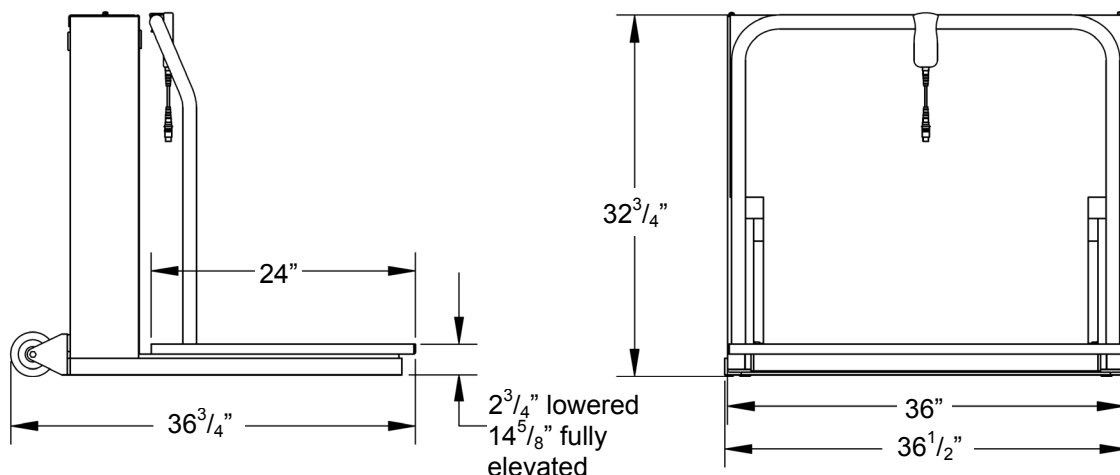
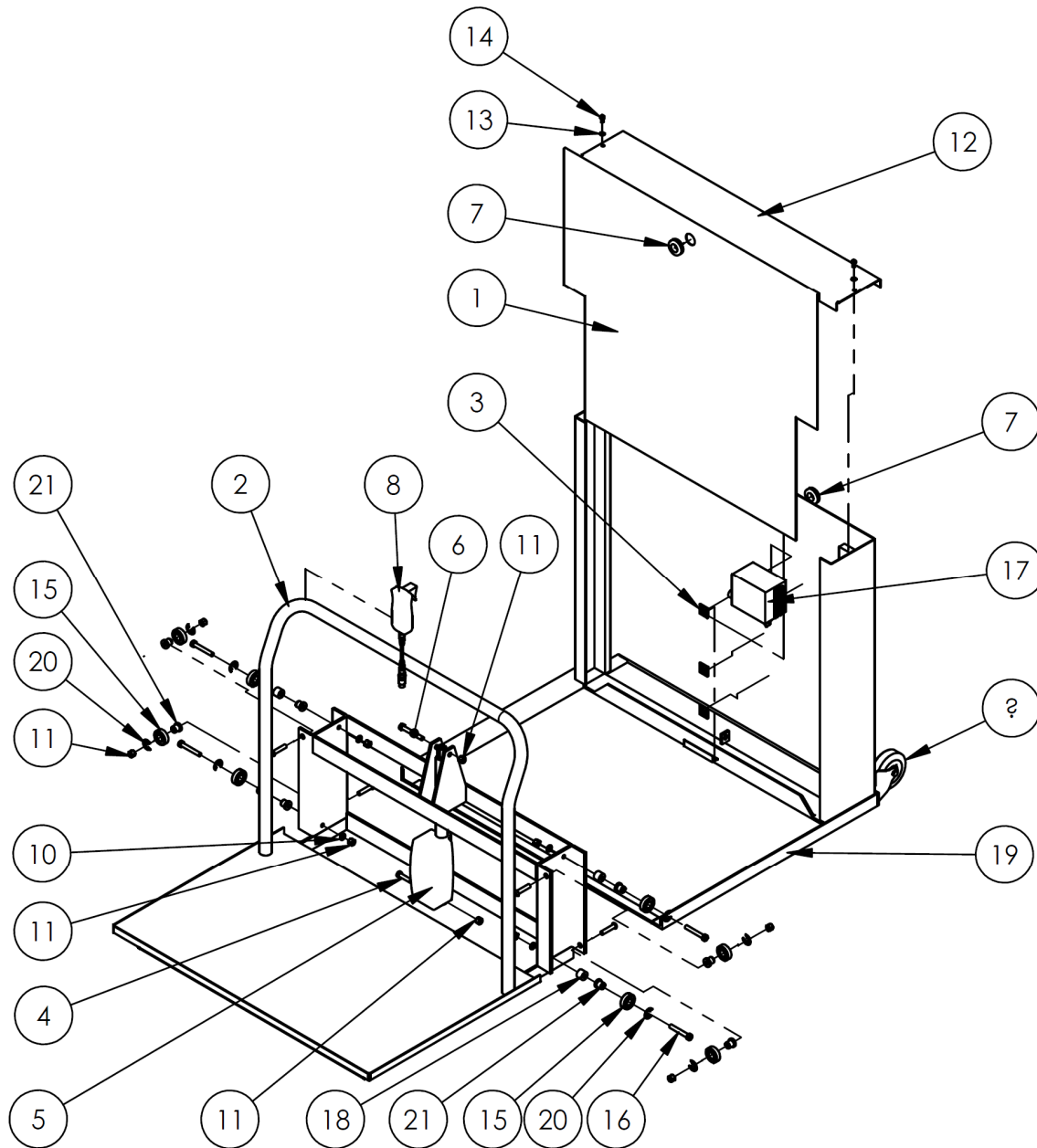
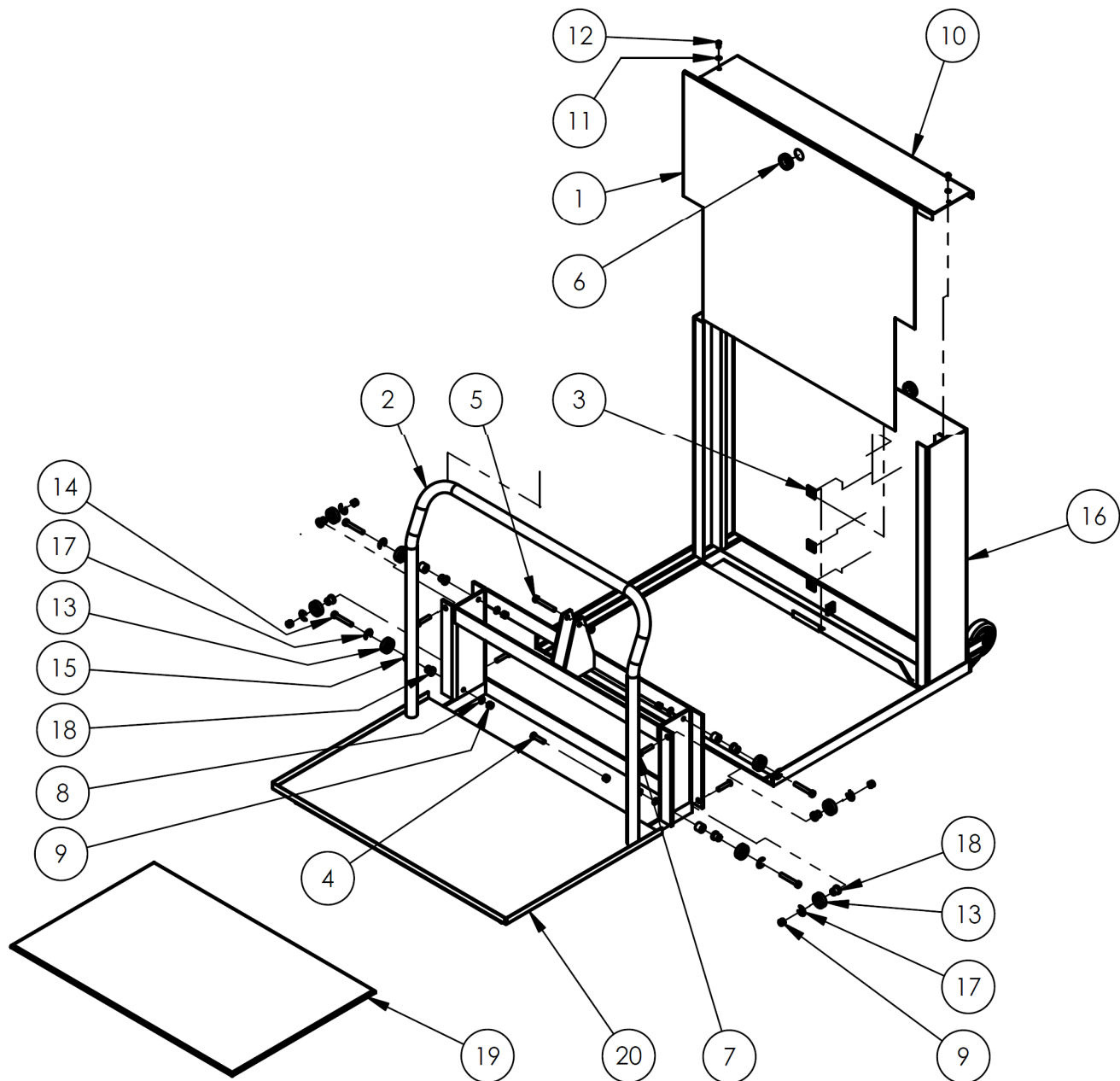


FIG. 1: WP-400-AC Exploded Parts Diagram and Bill of Materials

Item no.	Part no.	Description	Qty.	Item no.	Part no.	Description	Qty.
1	21-024-002	Cover, front, formed	1	12	21-024-003	Cover, top, formed	1
2	21-538-001	Subassembly, carriage	1	13	33617	$\frac{1}{4}$ in. split lock washer	2
3	21-034-027	Accessory, cable tie mounting base (4-way)	3	14	27661	$\frac{1}{4}$ in. – 16 UNC x $1\frac{1}{2}$ in.	2
4	14109	$\frac{3}{8}$ in. – 16 UNC x $1\frac{1}{2}$ in. bolt	1	15	20-110-006	Roller bearing	8
5	03-148-003	Linear actuator	1	16	24718	$\frac{3}{8}$ in. – 16 UNC BHSCS x $2\frac{1}{2}$ in. bolt	4
6	14114	$\frac{3}{8}$ in. – 16 UNC x $2\frac{3}{4}$ in. HHCS bolt	1	17	03-148-002-001	Control box for linear actuator	1
7	01-034-021	Grommet, rubber	2	18	21-113-020	Spacer, bearing	4
8	03-148-004	HIWIN linear actuator handset	1	19	21-514-003	Weldment, frame subassembly	1
9	24095	$\frac{3}{8}$ in. – 16 UNC BHSCSx $1\frac{3}{4}$ in. bolt	4	20	5133-75	Snap ring, e-clip, inner leg roller	8
10	33621	$\frac{3}{8}$ in. plain split lock washer	4	21	21-113-021	Spacer, bearing shaft	8
11	37024	$\frac{3}{8}$ in. Nylock insert nut	10				

FIG. 2: WP-400-DC Exploded Parts Diagram and Bill of Materials

Item no.	Part no.	Description	Qty.	Item no.	Part no.	Description	Qty.
1	21-024-002	Cover, front, formed	1	11	33617	$\frac{1}{4}$ " split lock washer	2
2	21-538-001	Subassembly, carriage	1	12	27661	$\frac{1}{4}$ " - 20UNC slot head machine screw, $\frac{1}{2}$ " long	2
3	21-034-027	Accessory, cable tie mounting base	3	13	20-110-006	Roller bearing	8
4	14109	Bolt, $\frac{3}{8}$ " - 16UNC x $1\frac{1}{2}$ "	1	14	24718	$\frac{3}{8}$ " - 16UNC BHSCS x $2\frac{1}{2}$ "	4
5	14114	Bolt, $\frac{3}{8}$ " - 16UNC x $2\frac{3}{4}$ " HHCS	1	15	21-113-020	Spacer, bearing, formed	4
6	01-034-021	Grommet, black rubber	2	16	21-514-003	Weldment, frame, subassembly	1
7	24095	$\frac{3}{8}$ "-16UNC BHSCS x $1\frac{3}{4}$ "	4	17	5133-75	Snap ring, e-clip, inner, leg roller	8
8	33621	Washer, $\frac{3}{8}$ " split lock	4	18	21-113-021	Spacer, bearing shaft	8
9	37024	Lock nut, grade 2, zinc finish, $\frac{3}{8}$ "-16	10	19	14-014-189	Deck, platform, ergo matting	1
10	21-024-003	Cover, top, formed	1	20	14-051-001	Adhesive, 3M 9786NP adhesive	1

Operation:

The platform is raised and lowered by an electric linear actuator which responds to commands from a 24V handheld push button controller. The actuator only moves while there is input from the controller, so the platform will maintain position when a control button is released.

1. To elevate the platform, simply press the UP button on the left side of the controller.
2. Pressing the DOWN button on the right side of the controller lowers the platform.
3. [DC powered units] If the platform does not respond to commands from the controller, the battery should be recharged.



Battery Charger Operation:



Working with or near lead acid batteries is dangerous.

- Batteries contain sulfuric acid and produce explosive gases. A battery explosion could result in loss of eyesight or serious burns.
- DO NOT smoke near the battery or expose the battery to a spark or flame.
- ONLY charge batteries in clean, dry, and well ventilated locations.
- DO NOT lay tools or any metallic item on top of a battery.
- When working with batteries, remove personal items such as rings, bracelets, necklaces, and watches. A battery can produce enough voltage to weld jewelry to metal.
- Always have plenty of fresh water and soap nearby in case contact with battery acid occurs.
- Operating the battery with a low voltage can cause premature motor contact failure.
- The charger is equipped with an external ground wire (small green). The charger must be grounded to the equipment. Be sure this wire is always connected to the frame or other metallic surface considered to be ground.
- Confirm that all battery connections are sound and clean.
- Replace defective cords and wires immediately.
- DO NOT use the charger if the flanged inlet is damaged.
- DO NOT connect the charger to a damaged extension cord.

Every DC powered unit is equipped with an onboard battery charger having a flanged electrical inlet. The charger is current limited and will not exceed its rated output even if loads are placed on the battery while it is charging. The charger fuse will blow if it is connected in reverse polarity.

To charge the battery:

- 1.) Plug the charger into an 115V 60 Hz receptacle by connecting the flanged inlet on the charger to an extension cord. Plug the other end of the cord to a wall socket. Use a short, thick extension cord.
- 2.) When properly connected, the charge LED will indicate the status of charge current flowing to the battery.
 - If only the red LED is on, the charger is providing full output to the battery.
 - If both the red and green LED's are on, the charger is "topping off" the battery.
 - When only the green LED is on, the unit is providing a "float" (maintenance) charge.
 - DO NOT leave the charger on for long periods after the battery is fully charged.
- 3.) Unplug the charger before using the pallet handler. Failure to do so could cause damage to cords, receptacles, or other equipment.

TROUBLESHOOTING--If the charger does not work:

- 1) Make sure all battery connections are electrically and mechanically sound.
- 2) Confirm that the AC source (e.g. wall socket) is energized.
- 3) Check the fuse. Replace only with a fuse having the same rating as the original fuse.
- 4) Determine battery condition. It may take some time before current begins to flow through a highly sulfated battery.

Maintenance:

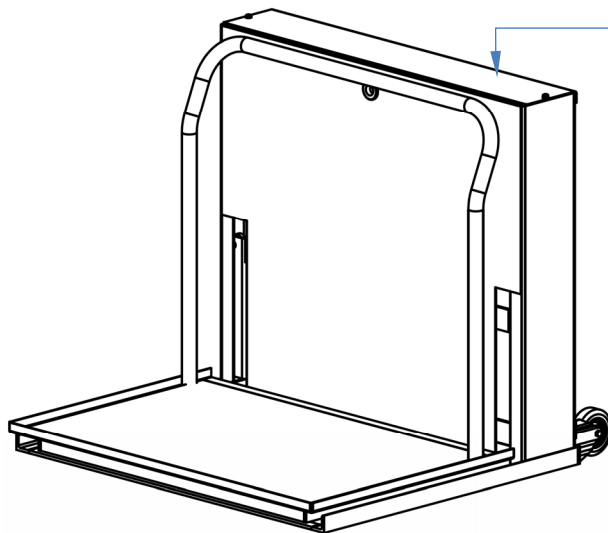
Before putting the machine into service, make a written record describing the appearance and operation (including sounds) of the unit. This record establishes “normal operating condition”. Regular maintenance is essential to keep the machine in normal operating condition.

At least once per month—Lower the platform completely and inspect the following items. Replace any item that cannot be restored to normal operating condition.

1. Wiring: inspect the electrical wiring for cuts or frays;
2. Structure: inspect the platform and frame for deformations and cracked welds. The platform should be square and rigid and should be level from side to side;
3. Linear actuator: cycle the platform up and down while listening and watching unusual noise, motion, or binding;
4. Pushbutton controller and cord: inspect the controller and look for damage that exposes internal components or wire.
5. Wheels: examine the wheels and confirm normal operating condition;
6. Battery: check the water level in the battery. *(DC models only)*
7. Labels (see “Label placement diagram; p. 23): confirm that all labels are in place and in good, readable condition.
8. Make a dated record of all repairs made to the unit.

Labeling Diagram:

Each unit should be labeled at all times as shown in the diagram below. Replace any label that is damaged and/or not easily readable.



Label 287: Data label

MODEL/MODÉLO/MODÈLE _____	
STATIC CAPACITY (evenly distributed) _____	lbs.
LA CAPACIDAD CONSTANTE (distribuida uniformemente) _____	kgs.
CAPACITÉ STATIQUE (distribuée régulièrement) _____	kgs.
SERIAL/SERIE/SÉRIE _____	
287 REV 0812	

LIMITED WARRANTY

Vestil Manufacturing Corporation ("Vestil") warrants this product to be free of defects in material and workmanship during the warranty period. Our warranty obligation is to provide a replacement for a defective original part if the part is covered by the warranty, after we receive a proper request from the warrantee (you) for warranty service.

Who may request service?

Only a warrantee may request service. *You are a warrantee if* you purchased the product from Vestil or from an authorized distributor AND Vestil has been fully paid.

What is an "original part"?

An original part is a part used to make the product as shipped to the warrantee.

What is a "proper request"?

A request for warranty service is proper if Vestil receives: 1) a photocopy of the Customer Invoice that displays the shipping date; AND 2) a written request for warranty service including your name and phone number. Send requests by any of the following methods:

Mail
Vestil Manufacturing Corporation
2999 North Wayne Street, PO Box 507
Angola, IN 46703

Fax
(260) 665-1339
Phone
(260) 665-7586

Email
sales@vestil.com

In the written request, list the parts believed to be defective and include the address where replacements should be delivered.

What is covered under the warranty?

After Vestil receives your request for warranty service, an authorized representative will contact you to determine whether your claim is covered by the warranty. Before providing warranty service, Vestil may require you to send the entire product, or just the defective part or parts, to its facility in Angola, IN. The warranty covers defects in the following *original* dynamic components: motors, hydraulic pumps, electronic controllers, switches and cylinders. It also covers defects in *original* parts that wear under normal usage conditions ("wearing parts"): bearings, hoses, wheels, seals, brushes, batteries, and the battery charger.

How long is the warranty period?

The warranty period for original dynamic components is 1 year. For wearing parts, the warranty period is 90 days. The warranty periods begin on the date when Vestil ships the product to the warrantee. If the product was purchased from an authorized distributor, the periods begin when the distributor ships the product. Vestil may, at its sole discretion, extend the warranty periods for products shipped from authorized distributors by *up to* 30 days to account for shipping time.

If a defective part is covered by the warranty, what will Vestil do to correct the problem?

Vestil will provide an appropriate replacement for any *covered* part. An authorized representative of Vestil will contact you to discuss your claim.

What is not covered by the warranty?

1. Labor;
2. Freight;
3. Occurrence of any of the following, which automatically voids the warranty:
 - Product misuse;
 - Negligent operation or repair;
 - Corrosion or use in corrosive environments;
 - Inadequate or improper maintenance;
 - Damage sustained during shipping;
 - Collisions or other incidental contacts causing damage to the product;
 - Unauthorized modifications: DO NOT modify the product IN ANY WAY without first receiving written authorization from Vestil. Modification(s) might make the product unsafe to use or might cause excessive and/or abnormal wear.

Do any other warranties apply to the product?

Vestil Manufacturing Corp. makes no other express warranties. All implied warranties are disclaimed to the extent allowed by law. Any implied warranty not disclaimed is limited in scope to the terms of this Limited Warranty.

